



**WORKING
WEEK 2025**

AND

Locate25 | 
THE NATIONAL GEOSPATIAL CONFERENCE

Conference Programme

**Collaboration, Innovation
and Resilience:** Championing
a Digital Generation

6-10 April

Brisbane Convention
& Exhibition Centre

#Locate25 #FIG2025

With thanks to our sponsors:

DESTINATION PARTNER



EVENT PARTNER



EVENT CO-SPONSOR



MEDIA PARTNERS



PLATINUM SPONSORS



GOLD SPONSORS



POP UP CAFÉ SPONSOR



SILVER SPONSORS



BRONZE SPONSORS



RECHARGE STATION SPONSORS



BESPOKE SPONSORS





Contents page

1. Event Organisers
2. Welcome
3. Committees
4. Conference Theme Song
5. About Brisbane
6. Pre-Events
7. Technical and Social Tours
8. Workshops
9. Program
10. Social Events
11. Plenary Sessions
12. Floorplan and Exhibition
13. Need Help?



Event Organisers

International Federation of Surveyors, FIG

The International Federation of Surveyors is an international, non-government organisation whose purpose is to support international collaboration for the progress of surveying in all fields and applications.

FIG is the premier international organization representing the interests of surveyors worldwide. It is a federation of the national member associations and covers the whole range of professional fields within the global surveying community. It provides an international forum for discussion and development aiming to promote professional practice and standards.

FIG was founded in 1878 in Paris and was known as the Fédération Internationale des Géomètres. This has become anglicized to the International Federation of Surveyors. It is a UN-recognized non-government organization (NGO), representing more than 120 countries throughout the world, and its aim is to ensure that the disciplines of surveying and all who practise them meet the needs of the markets and communities that they serve.

For more information, please visit: **www.fig.net**

Geospatial Council of Australia

The Geospatial Council of Australia (GCA) is Australia's peak body representing organisations and individuals across the geospatial, surveying, and space industries. Our members include established professionals, emerging talent, businesses, universities, training organisations, and not-for-profits – all united in advancing a vibrant, diverse, and thriving geospatial community.

Geospatial professionals are leaders and innovators, shaping industries through cutting-edge technologies such as location-based services, drones and autonomous vehicles, 3D modelling, robotics, artificial intelligence, machine learning, virtual reality, and the Internet of Things.

GCA is committed to promoting diversity and inclusion, mentoring the next generation, and championing the economic and societal benefits of geospatial innovation. GCA is Australia's most forward-thinking geospatial community, dedicated to driving progress and creating impact across the nation.

For more information, please visit: **www.geospatialcouncil.org.au**

Welcome from the Geospatial Council of Australia, Event Co-Organiser



Welcome to Brisbane and to FIG Working Week 2025 + Locate25! It's an honour to welcome both our local and international guests to this landmark event. More than just a conference, this week is a defining moment for Australia's geospatial industry - bringing together the best minds from around the world to discuss, innovate, and shape the future of our profession.

For the first time, FIG Working Week and Locate25 have come together to deliver a truly world-class experience. This unique collaboration provides an unparalleled opportunity to engage with experts, connect with international networks, and explore the latest advancements. With ten FIG Commissions shaping the program, you'll experience a diverse range of technical sessions, panel discussions, and interactive workshops. Whether you're here to share research, gain insights, forge new partnerships, or explore Brisbane, one of Australia's most vibrant cities, this week is set to be rich with opportunity.

World-Class Plenary Speakers

Throughout the event, you'll hear from an exceptional lineup of plenary speakers from across the globe, bringing their expertise and vision to the stage. These thought leaders will explore the critical challenges and opportunities shaping the future of geospatial sciences, including sustainability, resilience, and emerging technologies.

Among them is Geoff Smith, CEO of Australian Spatial Analytics and 2025 Queensland Australian of the Year, who will highlight how neurodivergent talent is revolutionising the geospatial sector, creating meaningful careers, and addressing critical skill shortages. We'll also hear from Melissa Harris, the incoming CEO of Geoscience Australia and immediate past chair of ANZLIC, alongside Greg Scott on the SDG Land Alliance, and Andrew Dowding, Managing Director of Winyama, who will explore Indigenous data sovereignty and how digital mapping can empower communities to protect and manage cultural knowledge.

Some of our international speakers include Linda Foster, Director of Land Records/ Cadastre at ESRI Inc.; Naa Dedei Tago, Surveyor and Climate Advisor to the President of Ghana; and Professor Anthony Yeh, a land use planning expert from Hong Kong. These plenary sessions will challenge perspectives, inspire action, and shape the future of our industry long after the conference ends.

Technical and Industry Insights

With a diverse program spanning ten FIG Commissions, alongside Locate25's national focus, you'll have access to a wide variety of sessions. Covering topics from land administration to hydrography, positioning technologies, geospatial education, and climate resilience solutions, the program caters to a broad spectrum of interests and expertise.

Workshops, technical sessions, and panel discussions will provide practical insights and innovative solutions to industry challenges. Whether you're a seasoned professional, a researcher, or an emerging leader in the sector, there will be ample opportunities to expand your knowledge and contribute to meaningful discussions.

Technical Tours

One of the standout features of FIG Working Week 2025 + Locate25 is the range of technical tours on offer. These tours provide a behind-the-scenes look at some of Brisbane's most exciting geospatial projects, from advanced surveying operations to smart city initiatives.

You'll have the chance to visit cutting-edge facilities and see geospatial technology in action, whether in infrastructure development, environmental monitoring, or urban planning. It's a rare opportunity to witness real-world applications up close and engage with professionals who are making a tangible impact.

Experience Brisbane at its Best

Beyond the conference sessions and technical tours, Brisbane offers a fantastic backdrop for networking and exploration. As one of Australia's most dynamic cities, it boasts a thriving cultural scene, world-class dining, and stunning natural attractions. The South Bank precinct, with its riverfront parklands, restaurants, and galleries, provides the perfect setting for informal networking and social events. If you're looking to explore further, Brisbane's proximity to the Gold Coast and Sunshine Coast means adventure is never far away. To help with your planning, a dedicated tourism booth is available at the conference registration area, where the team is ready to assist you with organising and booking experiences to enhance your stay.

Australia's geospatial sector is at the forefront of technological evolution, and this event is a powerful platform to showcase our expertise on the global stage. I encourage you to take full advantage of what this week has to offer - engage in discussions, challenge ideas, and immerse yourself in the diverse program. Let's use this opportunity to drive meaningful collaboration, inspire future leaders, and reinforce the essential role of geospatial in tackling global challenges.

Thank you for being part of this historic event. I look forward to the conversations, connections, and breakthroughs that will emerge over the coming days.

Tony Wheeler

CEO, Geospatial Council of Australia



Welcome from FIG, Event Co-Organiser

It is my pleasure to welcome you to FIG 2025 Working Week in the friendly and vibrant city of Brisbane, the capital of Queensland, Australia.



This conference hosted by Geospatial Council of Australia (GCA) in collaboration with FIG, aims to foster the exchange of ideas, promote best practices, and provide a welcoming forum for our professionals and leaders to network, ask questions, and share challenges. Our goal is to enhance the effectiveness of the survey and geospatial profession operating in the land, built and natural environments.

This year we gather under the theme Championing a Digital Generation. This theme is rooted in the belief that the unprecedented sustainability challenges we are facing as a society demand a comprehensive focus from our profession. We must collaborate, innovate and ensure a resilient and sustainable approach if we are to serve society for the benefit of both people and the planet.

To achieve sustainability and resilience we must connect with people. Sustainability, in the context of people, means demonstrating equality, diversity and inclusion. We must make sure that we leave no one behind. This principle applies both to a wide range of stakeholders in our communities, but also within our profession

Over the past decade, several transformative forces have intensified and converged, compelling our profession to redefine how we create, deliver, and communicate value. Each of these forces impacts our need to assess our value and contribution. When taken together they provide a significant impetus for us to better articulate our profession's contribution to a future where sustainability and resilience at the heart of the benefit to people and planet.

To be the champions we need to be, this conference highlights three of the transformational forces that we can have a valued impact: our planet and environment, application of technology and location-based data, and the professional workforce across all generations

First and underpinning all our discussion are the environmental concerns, reflecting the increased emphasis for climate action to prevent adverse environmental degradation. Next, we will ensure that people remain high on our agenda, both as society stakeholders and internally a professional workforce with recognisable standards. We must attract and retain talent, ensuring that our skills, training and development keeps us relevant, particularly in relation to transformation and technology, across all our disciplines. The third force, the continuous technological disruption and convergence.

This has accelerated on the one hand, adaptation in our working practices; and on the other hand, provided innovative visualisation tools that help communicate the issues and potential solutions.

Demonstrating value in shaping the outcomes of these forces is crucial to the long-term existence of the surveyors' profession.

Our program covers a wide range of topics drawn from all ten commissions and their working groups. As always, we feature a range of knowledge sharing platforms including thought leadership inviting an impressive line-up of plenary speakers who will address the three transformational forces. Additionally, we have special sessions related to small island developing states, and we will discuss how to attract the younger generation. This year I am pleased to announce that there are sessions co designed with our global and regional partners, along with additional sessions led by corporate members.

Above all the program seeks to help our profession to create value for sustainability, and putting this at the centre of how value is created, for business, people, society and the world as a whole. This commitment is encapsulated in FIG Strategic Vision 'Serving society for the benefit of people and planet' and in partnership.

The conference deliberations aim to reframe how we approach sustainability and resilience recognising we champion, in this digital generation, our impact across all generations in the workforce.

The conference organised in the International Conference Centre offers a special setting for meeting facilities but also located adjacent to the vibrant hub of the waterfront provides many opportunities for social event activities and relaxation before or after the working week.

Our Australian colleagues have done their very best to arrange a memorable event. On behalf of FIG Council and office, for all of you and especially our newcomers, I extend to you a warm welcome to our FIG family and FIG working week.



Diane A Dumashie RICS

FIG President

Meet FIG representatives at the FIG Booth for a talk

	Monday 7 April	Tuesday 8 April	Wednesday 9 April
Morning break	FIG Commission 3 FIG Commission 8	FIG Young Surveyors Network FIG Foundation	FIG Commission 2 FIG Commission 9 FIG Commission 10
Lunch	The two bidding candidates for 2029 Canada Uganda	FIG Task Forces	FIG Regional Capacity Development Network - Africa - Americas - Asia/Pacific
Afternoon break	FIG Council FIG Office	FIG Commission 5 FIG Commission 6	FIG Commission 4 FIG Commission 7



Discover the Future of Geospatial Technology at Booth 26



ABOUT US

CHC Navigation is pioneering innovative positioning and mapping technologies for a wide range of professional geospatial, construction, navigation and agriculture applications. Our comprehensive portfolio spans land and airborne surveying, advanced GNSS surveying technologies, 3D LiDAR mass data collection, precision agriculture, unmanned navigation, robotics, and real-time GNSS infrastructure.

OUR INDUSTRIES



Surveying &
Engineering



3D Mobile
Mapping



Marine
Surveying



Monitoring



Positioning
Services

Welcome from the Conference Convenor



It is with great excitement that I welcome you to FIG Working Week 2025 + Locate25, hosted by the Geospatial Council of Australia and the International Federation of Surveyors. This landmark event will bring together geospatial professionals from around the world for an unparalleled week of knowledge exchange, collaboration, and innovation.

This is more than just a conference - it's a unique opportunity to showcase Australia's strengths in surveying and spatial sciences on the global stage. Brisbane will serve as a "living lab," highlighting cutting-edge infrastructure projects, digital twin technologies, and a thriving industry network that is shaping the future of geospatial.

By combining FIG Working Week with Locate25, we are creating a conference experience that goes beyond national boundaries, offering delegates access to a diverse array of insights, technical sessions, and networking opportunities with international thought leaders. With over 500 papers and abstracts submitted, the event promises to be a hub of groundbreaking discussions on key challenges and emerging trends in the field.

Beyond the formal sessions, delegates will have the chance to engage in hands-on technical tours, interactive workshops, and social events designed to foster meaningful connections. Whether you are looking to exchange ideas with industry pioneers, explore the latest advancements in geospatial technologies, or gain practical insights from real-world case studies, this event offers something for everyone.

Take the opportunity this week to connect, learn, and contribute to shaping the future of our industry.

Steve Jacoby PSM

Conference Convenor

Executive Director – Spatial Information and Queensland Department of Resources

Conference Steering Committee

Dr Diane Dumashie

President, International Federation of Surveyors (FIG)

Steven Jacoby PSM

Executive Director – Spatial Information, Queensland Department of Resources and Co-Conference Director

Tony Wheeler

CEO, Geospatial Council of Australia

Louise Friis-Hansen

FIG Director and Co-Conference Director

Maria Bargholz Bentzen

FIG Office

Local Organising Committee

Peter James (Chair)

Narelle Underwood

Tony Wheeler

Paul Digney

Bec Pascoe

Rohan Bennett

Cate Bonthuys

Roshni Sharma

Steve Jacoby

Ryan Keenan

Abbas Rajabifard

Zahra Gharineiat

Daniel Paez

Zaffar Mohamed-Ghouse

Jemma Picco

Robert Sarib

Kate Fairlie

Anna Riddle

Lee Hellen

Kat Salm

FIG Council

President: Diane Dumashie, United Kingdom

Vice President: Winnie Shiu, United States

Vice President: Qin Yan, China

Vice President: Michalis Kalogiannakis, Greece

Vice President: Daniel Steudler, Switzerland

FIG Commissions

Commission 1, Professional Practice: Timothy Burch, United States

Commission 2, Professional Education: Dimo Todorovski, the Netherlands

Commission 3, Spatial Information: Sagi Dalyot, Israel

Commission 4, Hydrography: Eranda Gunathilaka, Sri Lanka

Commission 5, Positioning and Measurement: Ryan Keenan, Australia

Commission 6, Engineering Surveys: Werner Lienhart, Austria

Commission 7, Cadastre and Land Management: Rohan Bennett, Australia

Commission 8, Spatial Planning and Development: Kwabena Asiamah, Ghana

Commission 9, Valuation and the Management of Real Estate: Peter Ache, Germany

Commission 10, Construction Economics and Management: Mercy Iyortyer, Nigeria

Young and Emerging Professionals Committee

James Sadler, Chair

Sijan Bhandari, Vice-Chair

Oscar So, Immediate Past Chair

Fig Networks

Young Surveyors Network: Shirley Tendai Chapunza, Zimbabwe

Regional Network Africa (ARN): Mohammad Kabir Mansur, Nigeria

Regional Network Asia/Pacific: Rob Sarib, Australia

Regional Network Americas: Dan Roman, United States

Standards Network: David Martin, France

Fig Task Forces

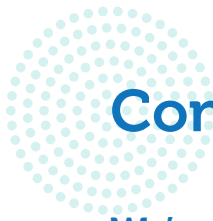
FIG and the SDGs: Paula Dijkstra, Netherlands

Climate Compass: Clarissa Augustinus, Ireland and Roshni Sharma, Australia

FIG and the Future Geospatial Information Ecosystem:
Abbas Rajabifard, Australia

Evolutionary Diversion and Inclusion: Stephen Djaba, Ghana





Conference Theme Song

We're Gonna Shine

By The LOCATE Whereabouts

We're mapping the world, with satellites so high,
Predicting disasters, like storms in the sky.
With a click and a zoom, we can mitigate floods,
Geospatial heroes, no more rolling in mud.

Innovation, it's the spark we need,
Collaboration plants the seed,
Resilience in the face of doubt,
At FIG and Locate25, we'll figure it out!
We'll bounce back quicker, no need for delay,
Climate resilience, we're leading the way.
Saving the planet one pixel at a time,
With our digital tools, we're feeling so fine!

From mines to your fields, we're boosting the dough,
Geospatial tech makes industries grow.
Trains are on time, agricultures in bloom,
We're solving the world's problems - clear out some room!
It's more than just maps, it's dollars and cents,
We're driving the growth with every conference.
The economy's soaring, we're taking the lead,
Geospatial solutions fulfilling the need!

So, remember Brisbane, FIG2025,
Where geospatial magic continues to thrive.
We'll save the world with a point and a line,
In this digital age, we're gonna shine!

Download it on





Co-host of FIG Working Week + Locate25

Who are we?

GCA is the peak body representing the interests of organisations and individuals, including new and emerging professionals working in the vast range of occupations for surveying, space and spatial in the digital world.



BECOME A MEMBER

We offer a variety of memberships, including free student memberships, professional individual memberships, overseas (affiliate) memberships, and organisational memberships.



Scan the code



Scan the code

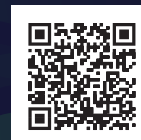
GET CERTIFIED

Enhance your career with GCA certifications, benchmarking your expertise and advancing your professional journey.



GCA EVENTS

Discover our upcoming events and webinars where you can earn CPD points, connect, learn, and collaborate with industry leaders.



Scan the code

SKILLS MIGRATION ASSESSMENT FOR SURVEYORS

GCA is the trusted assessing authority for Surveyor ANZSCO 232212 qualifications, ensuring a smooth transition to Australia's geospatial sector.



Scan the code

Connect with us on social media to keep up-to-date with GCA news and events:



@Geospatial Council of Australia



@Geo_Council



@Geospatial Council of Australia

About Brisbane

Australia's Sunshine City

Brisbane, the capital of Queensland, is Australia's third-largest city and a vibrant hub of culture, commerce, and natural beauty. Situated on the banks of the Brisbane River, the city enjoys a subtropical climate with warm, sunny weather almost year-round, earning it the nickname "Australia's Sunshine City."

Brisbane is known for its relaxed, friendly atmosphere, as well as its blend of urban sophistication and outdoor living. The city's skyline features a mix of modern skyscrapers and historical buildings, reflecting its growth from a small colonial settlement to a bustling metropolis. The iconic Story Bridge, which spans the Brisbane River, is a symbol of the city and offers breathtaking views for those adventurous enough to climb it. Additionally, Brisbane is set to host the 2032 Summer Olympics, which is expected to bring further growth and global attention to the city.

How to get around in Brisbane

Brisbane offers a well-connected public transport system, making it easy to get around the city.

Here are the main options:

- **Buses:** Brisbane's bus network is covering the city and surrounding suburbs. The Busway system provides fast and reliable services with dedicated lanes through key areas.
- **Trains:** The Queensland Rail Citytrain network connects Brisbane with nearby areas like the Gold Coast, Sunshine Coast, and Ipswich. It's ideal for both city commutes and exploring the wider region.
- **Ferries:** The CityCat and CityFerry services are scenic ways to travel along the Brisbane River. CityCats are catamaran-style ferries that stop at various locations along the river, offering a pleasant way to see the city's waterfront.
- **Trams:** Although Brisbane doesn't have a tram system, the Gold Coast Light Rail (G) connects Brisbane to the Gold Coast area.

To use public transport, you can get a go card, a smart card that offers discounted fares and can be used across buses, trains, and ferries. You can top up your card at various locations or online, making travel across Brisbane convenient and cost-effective.

Brisbane restaurants



Pre-Events

Enhance your conference journey by participating in our pre-events! To book a pre-event please update your registration using the link provided in your confirmation email. For assistance, please contact figandlocate@geospatialcouncil.org.au

Date	Time	Event
5 April & 6 April	09:00-1600 (sat) and 0900-1200 (sun)	Reference Frames in Practise (RFIP)
5 April & 6 April	09:00 16:00 (sat) and 0900-1200 (sun)	9th FIG Young Surveyors Conference in Collaboration with GCA Young and Emerging Professionals
5 April	09:00 - 11:00	Exploring ICESat-2 Data: Applications in Elevation Mapping, Water Height, and Beyond
5 April	09:00 - 11:00	Mastering ADAC: Integrating Industry-Specific Software for Optimal Outcomes
5 April	1400-1700	Neurodiversity in the workplace: it's easier than you think!
5 April	09:00 - 11:00	Unlocking Spatial Data: Human-Centred Design for Digital Twin Success
5 April	14:00 - 17:00	OGC approach of increasing interoperability with geospatial information
5 April	14:00 - 17:00	How to Build a Professional Practice Profitably
6 April	09:00 - 17:00	ArcGIS Parcel Fabric for Modern Cadastral Systems
6 April	09:00 - 12:00	Climate Masterclass
6 April	14:00 - 17:00	Maximising Geospatial Data Integration with FME Accelerator and 1Spatial Products



**WORKING
WEEK 2025**



Locate25 | **G**
THE NATIONAL GEOSPATIAL CONFERENCE





"We exist to **Represent, Promote** and **Support** Surveyors and their businesses across Australia"



G'DAY AND WELCOME TO AUSTRALIA!

Surveyors Australia are thrilled to welcome all FIG Delegates to Brisbane for this FIG Working Week. Our team are looking forward to seeing you at **Stand 25** where we will be showcasing how we promote, represent and support the surveying profession across Australia

Surveyors Australia proudly represents just **over 600 surveying businesses** across the nation. Our members employ skilled surveyors who play a crucial role in **infrastructure, housing** and **land development** projects all across Australia.

JOIN US THIS WEEK AT STAND 25 TO DISCOVER

- How surveying differs from State to State
- How we are promoting surveying careers to students, teachers and parents
- How we are training the next generation of survey technicians with the Surveyors Academy
- How insurance works for surveyors in Australia
- More about our Professional Standards Scheme
- How surveyors search including the launch of the new MapIT 2.0
- More about our Business Academy training the future leaders of the profession

There's a gift for every visitor to Stand 25, both for our members and visitors.

IN COLLABORATION WITH



Technical and Social Tours

To book a Technical/Social Tour, visit the Conference Help Desk on the Plaza Level.

TIME		PRICE
Saturday 5 April 2025		
0530 - 1630	Minjerribah (North Stradbroke Island)	\$285 AUD
Monday 7 April 2025		
09:30 - 16:00	Lands Surveying and Mapping Museum (walk up)	
14:00 - 17:00	Digital Engineering Brisbane for 2032: Technical Walking Tour	\$25 AUD
14:00 - 17:00	Queensland Government - Surveying Spatial and Land Administration Overview	\$25 AUD
Tuesday 8 April 2025		
09:30 - 16:00	Lands Surveying and Mapping Museum (walk up)	
14:00 - 17:00	Digitally Engineering Brisbane for 2032: Technical Walking Tour	\$25 AUD
14:00 - 17:00	Queensland Government - Surveying Spatial and Land Administration Overview	\$25 AUD
Wednesday 9 April 2025		
09:30 - 16:00	Lands Surveying and Mapping Museum (walk up)	
14:00 - 17:00	Digitally Engineering Brisbane for 2032: Technical Walking Tour	\$25 AUD
14:00 - 17:00	Queensland Government - Surveying Spatial and Land Administration Overview	\$25 AUD
Friday 11 April 2025		
0700 - 1800	Minjerribah (North Stradbroke Island)	\$285 AUD
09:30 - 16:00	Lands Surveying and Mapping Museum (walk up)	

Workshops

Title of workshop	Day	Time	Price
Reference Frames in Practise (RFIP)	Sat & Sun	"0900-1600 (Sat) 0900-1200 (Sun)"	\$175
Leveraging ICESat-2 Data for Geospatial Applications - Exploring ICESat-2 Data: Applications in Elevation Mapping, Water Height, and Beyond	Saturday	0900-1100	\$50
Mastering ADAC: Integrating Industry-Specific Software for Optimal Outcomes	Saturday	0900-1100	\$50
Neurodiversity in the workplace: it's easier than you think!	Saturday	1400-1700	\$75
Unlocking Spatial Data: Human-Centred Design for Digital Twin Success	Saturday	0900-1100	\$75
OGC approach of increasing interoperability with geospatial information	Saturday	1400-1700	\$75
How to Build a Professional Practice Profitably	Saturday	1400-1700	\$75
Climate Masterclass	Sunday	0900 - 1200	\$75
Maximising Geospatial Data Integration with FME Accelerator and 1Spatial Products	Sunday	1400-1700	\$75
ArcGIS Parcel Fabric for Modern Cadastral Systems (Esri)	Sunday	0900 - 1700	free of charge


**WORKING
WEEK 2025**
AND
Locate25 | 
THE NATIONAL GEOSPATIAL CONFERENCE

PROGRAM

SUNDAY 6 APRIL

0730-1600

Registration Open
Mezzanine Level at Brisbane Convention Centre

0900-1100

FIG General Assembly
Mezzanine Level For FIG members and observers

1100-1130

MORNING TEA BREAK
for General Assembly attendees

1130-1300

FIG General Assembly
Mezzanine Level For FIG members and observers

1300-1400

LUNCH BREAK
for General Assembly attendees

1400-1600

FIG General Assembly
Mezzanine Level For FIG members and observers

1800-2000

WELCOME RECEPTION
The Star

Program

MONDAY 7 APRIL						
	Plazza Ballroom	Auditorium	P1	P2	P4	P5
0730-0900			0745-0845 Newcomers/ icebreaker session			
0900-1030	Opening Ceremony					
1030-1100	MORNING TEA					
1100-1300	Plenary Session 1 Plaza Ballroom Championing a Digital Generation: Creating Value and Collaboration in Geospatial Ecosystem: Geography, GIS in the Digital World					
1300-1400	LUNCH					
1400-1530	Technical Session - TS01					
	Women's Land Rights and Access to Land (C7)	Remote Sensing and Earth Observation (C3)	Private Sector Contribution to the SDG's (SDG TF)	Diversity and Inclusion Task Force Sustaining Geospatial Innovation - The Hope of the Young Surveying Explorer		Standards in Surveying - FIG Standards Network
1530-1600	AFTERNOON TEA					
1600-1730	Technical Session - TS02					
	Digital Transformation, Land Management and NSDIs (C7)	Spatial Planning and Disaster Risk Management (C8)	AI and GIS - Transforming the Geospatial Landscape ESRI (FIG Platinum Member)	Hydrography for a Sustainable Future: Solutions for People, Planet, and Progress. (C4)		Digital Innovation, Collaboration, and Beyond - joint FIG/ISPRS session
1830-2230	GCA EXCELLENCE AWARDS DINNER Plaza Terrace Room, BCEC Tickets must be pre-purchased					

MONDAY 7 APRIL						
Boulevard 1	P7	P8	P9	P10	P11	Plazza Terrace Room
Opening Ceremony						
MORNING TEA						
Plenary Session 1 Plaza Ballroom Championing a Digital Generation: Creating Value and Collaboration in Geospatial Ecosystem: Geography, GIS in the Digital World						
LUNCH						
Technical Session - TS01						
Transparenacy in the Real Estate Market, Valuation and Trust (C9)	Geodesy Positioning Nations for the Future - Joint SIDS / AP CDN Session with Commission 5 Positioning & Measurement	Scanning, BIM and Virtual Reality (C6)	Leveraging Geospatial Intelligence for Spatial Intelligence (C8)	Climate and Sustainable Development (Climate TF)	Stray'n Land Administration Innovations Session 1 (C7)	
AFTERNOON TEA						
Technical Session - TS02						
Next-Generation Infrastructure: Sustainability and Smart Solutions (C10)	Proactive Capability for Disaster & Resilience - Joint SIDS / AP CDN Session with Climate Compass TF	Monitoring of Civil Infrastructure and Natural Phenomena (C6)	Digital Atlas of Australia Session	Member Associations Forum (inc Regional Bodies Forum)	Spatial Data Infrastructure and Standards (C3)	
GCA EXCELLENCE AWARDS DINNER Plaza Terrace Room, BCEC Tickets must be pre-purchased						

Program

TUESDAY 8 APRIL						
	Plazza Ballroom	Auditorium	P1	P2	P4	P5
0730-0900					0730-0845 FIG Foundation meeting	
0900-1100	Plenary Session 2 <i>Plazza Ballroom</i> Creating Value in Land Management: Executing a Resilient Vision of Relationships Between Land, Climate, and People					
1100-1130	MORNING TEA					
1130-1300	Technical Session - TS03					
	Land Policy and Legal Perspectives (C7)	Reference Frames and Dynamic Datums: Moving with the Times (C5)	Crucial Role of Governments to achieve SDGs (SDG TF)	"Grow your Business" Leica Geosystems (FIG Platinum Member)	CASLE Meeting	
1300-1400	LUNCH					
1400-1530	Technical Session - TS04					
	Multi-Purpose Positioning Infrastructure: Greater than the Sum of their Parts (C5)	Land Management and Spatial Governance (C8)	FIG Directors General Forum/DG Forum: The Interplay Between Geo and Land Surveying and Mapping	Empowering Change: Harnessing Open Geospatial Tools for Global Impact (YSN)	FIG Peer Review Editorial Board Meeting	French Session 1
1530-1600	AFTERNOON TEA					
1600-1730	Technical Session - TS05					
	Innovative Applications of Cost-Effective Positioning in Mitigating the Impact of Disasters & Climate (C5)	Workforce Session	Fit-for-Purpose Land Administration (C7)	Digital Transformation and Spatial Planning Towards Climate Resilience (C8)		French Session 2
1730-1830	Commission 5 Positioning and Measurement Annual Meeting		Commission 7 Cadastre and Land Management Annual Meeting	Commission 8 Spatial Planning and Development		Commission 2 Professional Education Annual Meeting
1900-2230	COMMISSION DINNERS					

TUESDAY 8 APRIL						
Boulevard 1	P7	P8	P9	P10	P11	Plazza Terrace Room
Plenary Session 2 <i>Plaza Ballroom</i> Creating Value in Land Management: Executing a Resilient Vision of Relationships Between Land, Climate, and People						
MORNING TEA						
Technical Session - TS03						
Resilient Champions of Surveying History 1	Geospatial Information Management & Infrastructure Development - Joint SIDS / AP CDN Session with Commission 3 Spatial Information	Innovations and AI in the field of property values (C9)	Gender and Land in Spatial Governance (C8)	Climate and Disaster (Climate TF)	Innovations in Urban Planning and Land Management (C3)	She Maps Students' Drone Workshop
LUNCH						
Technical Session - TS04						
Resilient Champions of Surveying History 2	Growing the Capacity of Land Surveying & Administration Profession – Joint SIDS / AP CDN session with Commission 7 Land Administration	Mobile Technologies for Inclusive Sidewalk Mapping - Or Mapping Sidewalks for All: Mobile Tech and Community Empowerment 1 (C3)	3D Land Administration and LADM Session 1 (C7)	A Special Focus on Business Session 1	Professional Education – Learning Methods and Styles in Surveying Education (C2)	She Maps Students' Drone Workshop
AFTERNOON TEA						
Technical Session - TS05						
Resilient Champions of Surveying History 3	SIDS Meeting & Talanoa 1 Regional Capacity Development Asia - Pacific / Americas SIDS	Mobile Technologies for Inclusive Sidewalk Mapping - Or Mapping Sidewalks for All: Mobile Tech and Community Empowerment 2 (C3)	Innovative Approaches to Valuing Unregistered Land: Collaborative Strategies for a Resilient Future - Partner session with GLTN (in collaboration with RICS)	A Special Focus on Business Session 2	Technology Benefits of Hybrid GNSS Receivers CHC Navigation (FIG Platinum Member)	She Maps Students' Drone Workshop
Commission 10 Construction Economics and Management Annual Meeting	Commission 4 Hydrography Annual Meeting	Commission 3 Spatial Information Management Annual Meeting	Commission 9 Valuation and the Management of Real Estate Annual Meeting	Commission 1 Professional Standards and Practice Annual Meeting	Commission 6 Engineering Surveys Annual Meeting	
COMMISSION DINNERS						

Program

WEDNESDAY 9 APRIL						
	Plazza Ballroom	Auditorium	P1	P2	P4	P5
0730-0900			0730-0845 Presidents Meeting (by invitation only)			
0900-1100	Plenary Session 3 <i>Plaza Ballroom</i> Building Foundational Capabilities that Support People in the Built and Ocean Environment					
1100-1130	MORNING TEA					
1130-1300	Technical Session - TS06					
	Resilient PNT: What, Why, How, Who and When?' (C5)	Marine Cadastre and Applications (C7)	The Nexus Between SDG's and Professional Education in Geospatial World – (SDG TF)	Is the Future of our Profession a Coherent and Merged Approach joint FIG/WGIC session	Writing a successful grant application - Joint Aubrey Barker Fund / FIG Foundation Session	Sustainability, Climate Change and Real Estate Values (C9)
1300-1400	LUNCH					
1400-1530	Technical Session - TS07					
	An Analog Earth in Digital Models: Capturing the World Around Us (C5)	Stray'n Land Administration Innovations Session 2 (C7)	Academic Forum	Fit-for-Purpose Land Administration II (C7)	Regional Capacity Development Meeting - African Region (ARN)	She Maps Teachers' Drone Session 1
1530-1600	AFTERNOON TEA					
1600-1730	Technical Session - TS08					
	3D Land Administration and LADM Session 2 (C7)	Geoinformation for Sustainable Development Goals - SDGs (C3)	Innovations in Professional Education (C2)	AI and Analytics in Land Administration (C7)	FIG Corporate Members Meeting	She Maps Teachers' Drone Session 2
1830-2230	GALA DINNER Brisbane City Hall Tickets must be pre-purchased					

WEDNESDAY 9 APRIL						
Boulevard 1	P7	P8	P9	P10	P11	
<div>Plenary Session 3</div> <div>Plaza Ballroom</div> <div>Building Foundational Capabilities that Support People in the Built and Ocean Environment</div>						She Maps Teachers' Drone Workshop
MORNING TEA						
Technical Session - TS06						
Indigenous Mapping	SIDS Meeting & Talanoa 2 Regional Capacity Development Asia Pacific / Americas	World Bank Initiatives in the Asia and Pacific Region	Geospatial for Everyone: The Diversity & Inclusion Paper Forum	Transforming Industries through Trimble Technology Trimble (FIG Platinum Member)	Geospatial Technologies for Climate Resilience (C3)	She Maps Teachers' Drone Workshop
LUNCH					Legacy Project TFDEI + TFSDG	
Technical Session - TS07						
Advancing Hydrospatial Intelligence: Innovation and Resilience in the Digital Era (C4)	Digital Transformation Strategies in the Construction Industry (C10)	Cadastral Digitisation and Automation (C7)	The Role of Surveyors in Fostering Recovery and Reconstruction in Crisis-Affected Contexts: Changed Mindsets and Successful Practices - Partner session with GLTN	Surveying & Geospatial Opportunities with First Nation Peoples: Joint Session AP CDN & Commission 7	Artificial Intelligence and Automation in Geospatial Applications (C3)	
AFTERNOON TEA						
Technical Session - TS08						
Applications and Challenges of Mobile Mapping (C6)	Strengthening Capacity and Capability of Young Surveyors for a Better Future Joint Session (YSN/C1/ AP CDN)	New Methods and Techniques to Improve Measurement Accuracy & Understanding of Relative Sea Level Rise and its Consequences (C4)	Modern Infrastructure Development - Innovations and Monitoring Techniques (C6/C10)	Surveyors Trust Session	Property Extraction and Taxation: Compensation, Transparency and Trust (C9)	
<div>GALA DINNER</div> <div>Brisbane City Hall</div> <div>Tickets must be pre-purchased</div>						



Australian Government
Geoscience Australia

Join us for a live SouthPAN demonstration



Are you curious about harnessing the potential of SBAS-enabled technology? SouthPAN provides benefits such as improved accuracy, enhanced integrity and better availability, all offered as free and open services.

At Geoscience Australia, we are on a mission to help you optimise operations, improve productivity and efficiency, maintain high health and safety standards, and drive innovation at scale to compete with global capabilities. SouthPAN can take you there!

SouthPAN (Southern Positioning Augmentation Network) is improving the accuracy and reliability of satellite-based positioning systems across Australia and New Zealand. When using SouthPAN, accuracy improves from 5–10 metres down to less than a metre, and in some cases, as little as 10 centimetres.

We would be thrilled if you join us and our partners for a live lunchtime demonstration of the powerful accuracy of a SouthPAN-enabled receiver and learn more by chatting with our experts.

Join us for a live demonstration

Where

at the Geoscience Australia stand in the Australian Government booth

When


Monday, 7 April
Tuesday, 8 April
Wednesday, 9 April

Time


1:20 pm, concluding at 1:45 pm

THURSDAY 10 APRIL

0900-1200	General Assembly Brisbane Convention Centre
1200-1300	FIG 2026 SOCIAL EVENT



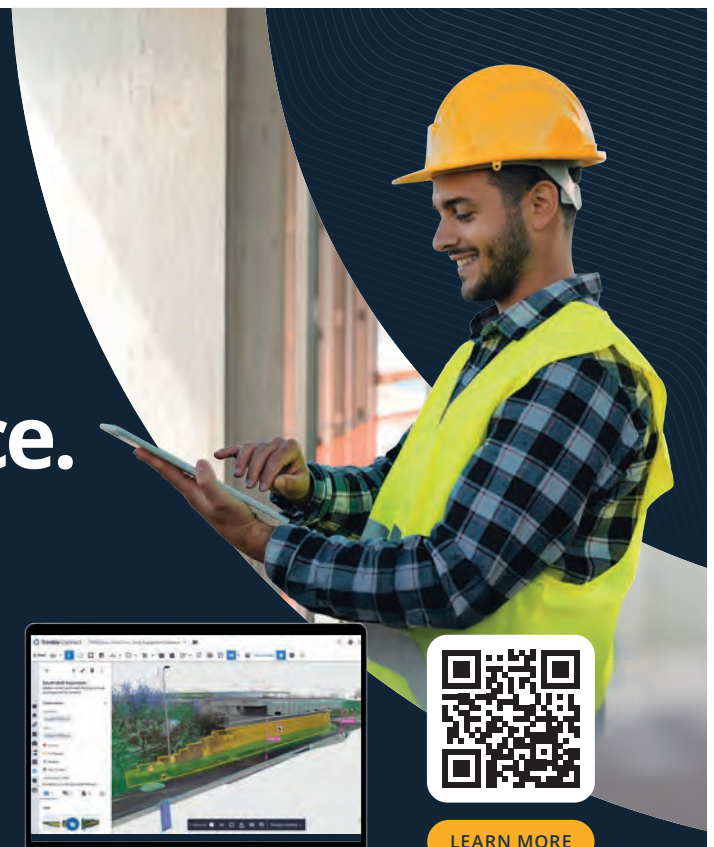

VISIT US AT **BOOTH #30**



Turn complexity into confidence.

When everything's on the line, confidence is your greatest asset. With instant access to accurate reality capture data for every stakeholder, from the field to the boardroom, you eliminate second-guessing and delays, fostering seamless collaboration built on unwavering trust.

That's the power of the latest extension to **Trimble® Connect®**. Now, you can securely store, manage and share even the most massive scan datasets in the cloud, empowering informed decisions, anywhere, anytime.

LEARN MORE

© 2025, Trimble Inc. All rights reserved. PN GEO-244

Take a look at these
AP20 testimonials:



Webster
Survey Group.



Kappeli
Construction.

Leica
Geosystems

We guarantee the Leica
AP20 AutoPole will increase
productivity in the field by
more than 20%.

Put it to the test.

Cover Every Angle

Visit the Leica Stand to try
the AP20 AutoPole

www.pure-surveying.com



C.R. Kennedy
GEOSPATIAL SOLUTIONS
Authorised Distributor & Service Partner



Social Events

To book a social event, please see the Conference Help Desk on the Plaza Level.

Welcome Reception

Date: Sunday, 6th April

Time: 6pm – 8pm

Location: The Star Brisbane, Leisure Deck (Level 7)

Fee: included in registration

All registered delegates, accompanying persons, and exhibitors are invited to attend the Welcome Reception. Perched 35 metres above street level, between the brand-new Star Brisbane Resort's four towers, the Leisure Deck is an open-air oasis in the heart of Brisbane's CBD. Take in the sweeping, panoramic views of the city skyline. As the sun sets and the city lights come to life, you'll be treated to a spectacular backdrop that perfectly captures the charm and vibrancy of Brisbane. This is more than just a gathering - it's an experience designed to delight your senses and create lasting memories.

GCA Geospatial Excellence Awards Dinner

Date: Monday, 7th April

Time: 6:30pm – 10:30pm

Location: Brisbane Convention and Exhibition Centre

Fee: AUD 175.00

Celebrate the pinnacle of achievement in Australia's geospatial industry at the Geospatial Excellence Awards Dinner, hosted by the Geospatial Council of Australia.

This prestigious evening brings together the brightest minds and leaders in the field to honour innovation, excellence, and outstanding contributions. With nominees comprised of state award winners, the event promises to showcase the best of the best, highlighting groundbreaking projects and visionary talent shaping the future of the industry.

Indulge in a three-course dinner, complemented by premium beverages and captivating entertainment. The evening offers a perfect blend of recognition and celebration, creating an atmosphere of excitement and inspiration.

FIG Commission Dinners

Date: Tuesday, 8th April

Time: 1900-2230

Location: Various

Fee: Self-funded

Commission Chairs invite you to join their dinners. These will be based at various locations in Brisbane. You can make bookings at the conference.

Gala Dinner

Date: Wednesday, 9th April

Time: 6:30pm – 10:30pm

Location: Brisbane City Hall

Fee: AUD 185.00

Step into a world of elegance and celebration at the Gala Dinner, hosted in the iconic Brisbane City Hall.

Since its opening in 1930, this architectural masterpiece has stood as a beacon of civic pride, renowned for its timeless beauty and grandeur. With its soaring ceilings, grand chandeliers, and rich history, Brisbane City Hall promises a setting befitting a night of luxury and celebration. Including a three-course meal, beverages and live entertainment this is an evening not to be missed.

Considered the grand finale of the FIG Working Week + Locate 2025, the Gala Dinner offers a perfect opportunity to reflect on the week's achievements and forge lasting connections.

Farewell Function

Date: Thursday, 10 April

Time: 12:00 - 13:00 – immediately following the General Assembly

Location: Plough Inn, 29 Stanley St Plaza South Bank, 5 min walk from the Convention Centre

Fee: included in registration

(The farewell function is primarily for the participants at the General Assembly)

Join us as we toast to a successful event and at the same time welcome you to FIG Working Week 2026 in Cape Town, South Africa. This event is hosted by FIG Working Week 2026, Cape Town, South Africa.

Plenary Sessions

PLENARY SESSION 1: MONDAY 7 APRIL 2025 11:00 - 13:00

Chair: FIG Vice President Qin Yan, China

Seeks to set the tone of the three-day conference in the context of the power of geography and geospatial ecosystem. This encompasses the physical features of the earth and its atmosphere, as well as the human activity/ populations and effects, resources and economic activities.



Mr Greg Scott, Australia

PVBLIC Foundation Executive Director of the SDG Data Alliance

Geography and the Geospatial Ecosystem: Enabling Opportunities for a Digital Generation



Mr Stamatis Kotouzas, Singapore

Senior Land Specialist, World Bank

The World Bank wider land and climate agenda and activities in the Pacific region



Dr Li Pengde, China

Head of the United Nations Global Geospatial Knowledge and Innovation Centre (UN-GGKIC) in Deqing, China

Innovating Global Geospatial Knowledge to Bridge the Digital Divide



Ms Linda Foster, USA

Director, Land Records/Cadastral Solutions ESRI

GIS and the Geospatial Ecosystem: Creating the World You Want to See



Ignite Presentation

Ms Lisa Bush, Australia

Geoscience Australia

From silos to synergy: Building Australia's first national geospatial information ecosystem with the Digital Atlas of Australia

PLENARY SESSION 2: TUESDAY 8 APRIL 2025 9:00 - 11:00

Chair: FIG Vice President Winnie Shiu, USA

Continuing the climate focus, this session seeks to create and define what is a resilient relationship between land, climate change and people. As professionals leading in the land, marine and built environment, it is imperative that we rethink core assumptions, challenge established norms and ensure future-proof practices and standards.



Dr Charisse Griffith-Charles, Trinidad & Tobago

Head of Department at the University of the West Indies and President CASLE, Caribbean Region

Resilience in human-land relationships in the face of powerful resource, climate, and social change



Dr Siobhan McDonnell, Australia

Associate Professor, Director and Lead, The Australian National University
Rethinking gender and climate change: implications for land use planning and resettlement



Mr Viliami Folau, Tonga

Deputy CEO and Director of Surveying at the Ministry of Lands, Survey, Planning and Natural Resources

Resilience through Land Management: Linking Land, Climate and People



Ignite Presentation

Mr Geoff Smith, Australia

Chief Executive Officer, Australian Spatial Analytics

Unlocking enormous potential: the neurodiverse geospatial workforce revolution

PLENARY SESSION 3: WEDNESDAY 9 APRIL 2025 9:00 - 11:00

Chair: FIG Vice President Michalis Kalogiannakis, Greece

This session will consider the professional standards, competencies and appropriate skills to ensure competent professionals in a digital generation. We need to ensure that our skills, training and development keeps us relevant, particularly in relation to transformation and technology that is essential across all our survey and geospatial disciplines.



Professor Matt King, Tasmania

Director of the Australian Centre for Excellence in Antarctic Science
Ice Sheets and Future Shorelines: The Necessary Geodetic Revolution



Ms Melissa Harris, Australia

CEO Geoscience Australia
Australia's Geospatial foundations: supporting a connected world



Ms Allison Craddock, USA

Member of the Geodynamics and Space Geodesy Group at the NASA Jet Propulsion Laboratory in Pasadena, California, USA
Where am I? Unlocking the Power of Geodesy with International Collaborations



Professor Anthony Yeh, Hong Kong

Department of Urban Planning and Design, The University of Hong Kong, HKSAR China
Big Data and Smart Cities



Ignite Presentation

Ms Kass Boladeras, Australia

Winyama – Marketing and Operations Manager, Digital Empowerment Program Manager
Healing Country by Bridging the Digital Divide: The Power of Indigenous Mapping

Floor Plan and Exhibition

Pop-Up Cafe	Onneer	17	FIG 2028	35	Institution of Surveyors NSW
1	Government	18	Ripro	36	Landair
2	Government	19	Terrasolid	37	Zhuohai Precise Technology Co. Ltd
3	Queensland Government	20	She Maps	38	Blue Marble
4	ESRI Inc & Australia	21	Anditi	39A	
5	Aptella	22	Locus	39B	Wingtra
6	ComNav	23	South Survey	40	SuperMap
7	Planet	24	Vexcel	41	Meter platform and application company (METER APP)
8	Map Gear	25	Surveyors Australia	42	Aerometrex
9	Woolpert	26	CHCNAV	43	GCA Space
10	DSM Geodata	27	Leica Geosystems	Charging Station	Safe Software
11	12D Synergy	28	1Spatial	A	NearMap
12	GP One	30	Trimble	B	Kurloo
13	Pix4D	31	Phase One & Riegl	C	Faramoon
14	GeoFoncier	32		D	PP Solutions
15	FIG 2026: Cebisa Conferences	33	Terria	E	Jacobs
16	FIG & FIG 2027: Kartverket	34	Unique Subsea Australia		



*Please note, the floor plan may change**

A Better Way to Manage Land Information

Together let's Build Land Information Systems for the Future.

Your organization's decisions today can create a better, more sustainable world for generations to come.

go.esri.com/fig2025

Come see us at Booth 4



esri®

THE
SCIENCE
OF
WHERE®



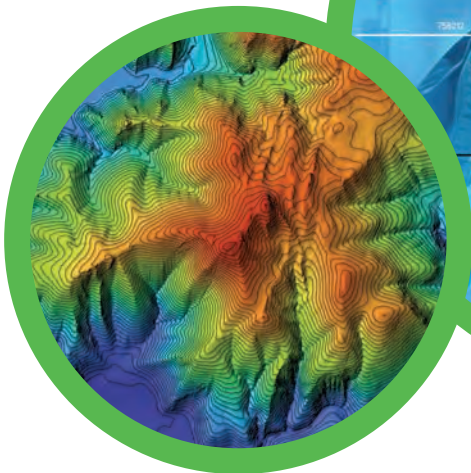
esri™ Australia



Need Help?

We're here for you! If you need assistance:

- Look for our friendly volunteers in red shirts – they're happy to help.
- Check the event app for all event information including the full program, exhibitor information, and updates.
- Visit the Help Desk for any questions or support.





Australian Government

From silos to synergy, mapping Australia's future

Together, we are harnessing the power of location data to drive meaningful place-based decisions for the benefit of all Australians.

Visit the Australian Government booth:

Australian Bureau of Statistics

Australian Climate Service

Australian Geospatial-Intelligence Organisation

Department of Social Services

Digital Atlas of Australia

Geoscience Australia

National Emergency Management Agency



www.fig2026.org

**STAND A CHANCE TO WIN
SCAN, FOLLOW/LIKE, TAG AND SHARE**

THE FIG 2026 QR CODES AND YOU COULD WIN
A FREE DELEGATE PASS TO ATTEND FIG 2026

#fig2026southafrica #FIG2026CPT #capetown #figsurveyor #geospatial



FIG2026 Facebook



FIG2026 LinkedIn



FIG Facebook



FIG LinkedIn



FIG Working Week 2027

Stavanger Norway 23–27 May

The Power of Where for the new Generations

