

Framework for Effective Land Administration

FIG Commission 7, Annual Meeting

September 23rd, 2021

UN-GGIM Expert Group on Land Administration and Management

Kees de Zeeuw, Eva-Maria Unger & Rohan Bennett, the Netherlands



UN-GGIM

United Nations Committee of Experts on
Global Geospatial Information Management

Expert Group on
Land Administration and Management

Positioning geospatial information to address global challenges

ggim.un.org

Expert Group on Land Administration and Management

Member states (26)

- Barbados
- Belgium
- Burkina Faso
- Canada
- Chile
- China
- Egypt
- Finland
- Guyana
- India
- Korea (Republic of)
- Kuwait
- Lesotho
- Mexico
- Morocco
- **Netherlands**
- Norway
- Saudi Arabia (Kingdom of)
- Singapore
- Spain
- Sri Lanka
- Suriname
- Sweden
- Tonga (Kingdom of)
- United Arab Emirates
- United Kingdom

Professional bodies (9)

- IHO
- FAO
- UNECE-WPLA
- UN-Habitat/GLTN
- World Bank
- Standards Development Organization

- UN-GGIM: Geospatial Societies
- UN-GGIM: Academic Network
- UN-GGIM: Private Sector Network



UN-GGIM

United Nations Committee of Experts on
Global Geospatial Information Management

Expert Group on
Land Administration and Management

Positioning geospatial information to address global challenges

ggim.un.org

Development of the Framework for Effective Land Administration



UN-GGIM

United Nations Committee of Experts on
Global Geospatial Information Management

Expert Group on
Land Administration and Management

Positioning geospatial information to address global challenges

ggim.un.org

Framework for Effective Land Administration

E/C.20/2020/29/Add.2

Framework for Effective Land Administration

A reference for developing, reforming, renewing, strengthening, modernizing, and monitoring land administration

E/C.20/2020/29/Add.2

The United Nations Committee of Experts on Global Geospatial Information Management (UNGGIM) as the apex intergovernmental body seeks to play the lead role in setting the agenda for global geospatial information management and to promote its use to address key global challenges. UN-GGIM is the forum to liaise and coordinate among Member States, and between Member States, international organizations and stakeholders.



Secretariat for the United Nations Committee of Experts on Global Geospatial Information Management
Global Geospatial Information Management Section
Statistics Division
Department of Economic and Social Affairs
United Nations

Framework for Effective Land Administration

page 1

Content:

ACRONYMS	3
EXECUTIVE SUMMARY	4
BACKGROUND	7
Seventeen Goals to Transform Our World	7
Global Agenda and Guidelines	8
Global Geospatial Information Management	9
Integrated Geospatial Information Framework	10
EFFECTIVE LAND ADMINISTRATION	11
The need for effective land administration	11
People - End poverty and hunger in all forms and ensure dignity and equality	11
Planet - Protect our planet's natural resources and climate for future generations	12
Prosperity - Ensure prosperous and wellbeing of communities	12
Peace - Foster peaceful, just and inclusive societies	13
Partnership - Implement the agenda through a solid global partnership	13
Global commitment	13
FRAMEWORK FOR EFFECTIVE LAND ADMINISTRATION ENVISIONED	15
Vision	15
Mission	15
Goals and Requirements	15
Outcomes	16
Stakeholders	17
Using and Applying	17
NINE PATHWAYS OF THE FRAMEWORK FOR EFFECTIVE LAND ADMINISTRATION	18
Pathway I: Governance, Institutions and Accountability	18
Pathway II: Policy and Legal	19
Pathway III: Financial	21
Pathway IV: Data	22
Pathway V: Innovation	23
Pathway VI: Standards	24
Pathway VII: Partnerships	25
Pathway VIII: Capacity and Education	26
Pathway IX: Advocacy and Awareness	27
CONCLUSIONS AND WAY FORWARD	29



UN-GGIM

United Nations Committee of Experts on
Global Geospatial Information Management

Expert Group on
Land Administration and Management

Positioning geospatial information to address global challenges

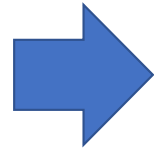
ggim.un.org



UN-GGIM
UNITED NATIONS
COMMITTEE OF EXPERTS ON
GLOBAL GEOSPATIAL
INFORMATION MANAGEMENT



Positive
development



https://ggim.un.org/documents/FELA_arabic.pdf

https://ggim.un.org/documents/FELA_chinese.pdf



UN-GGIM

United Nations Committee of Experts on
Global Geospatial Information Management

Expert Group on
Land Administration and Management

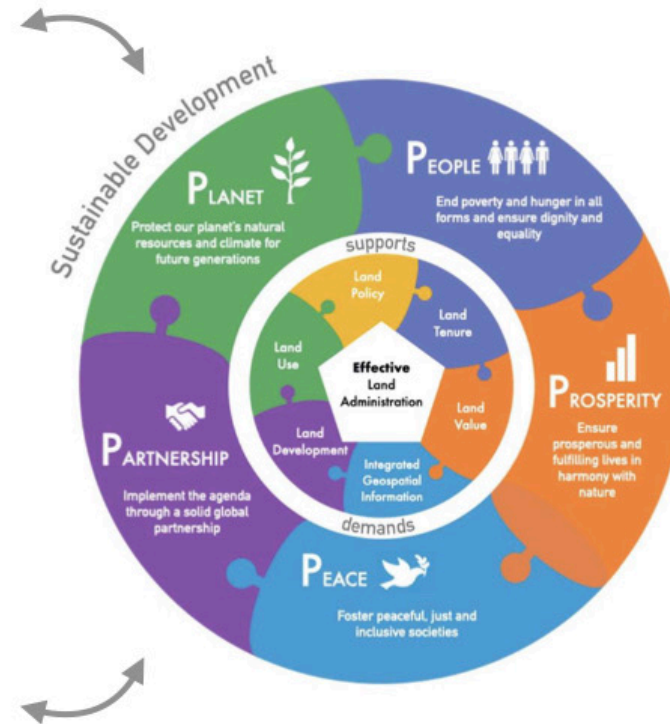
Positioning geospatial information to address global challenges

ggim.un.org

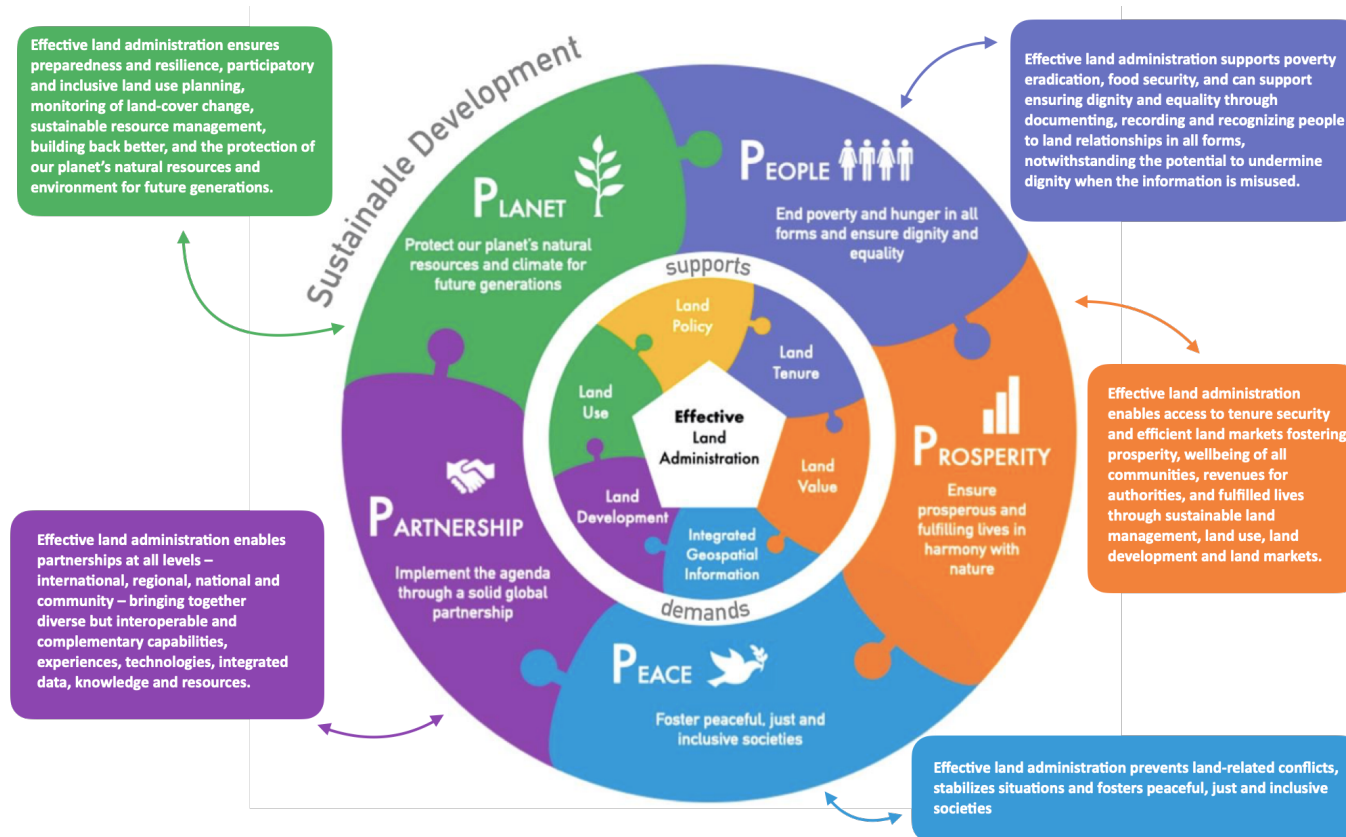
FELA defines Effective Land Administration

Effective land administration caters to all people, and must:

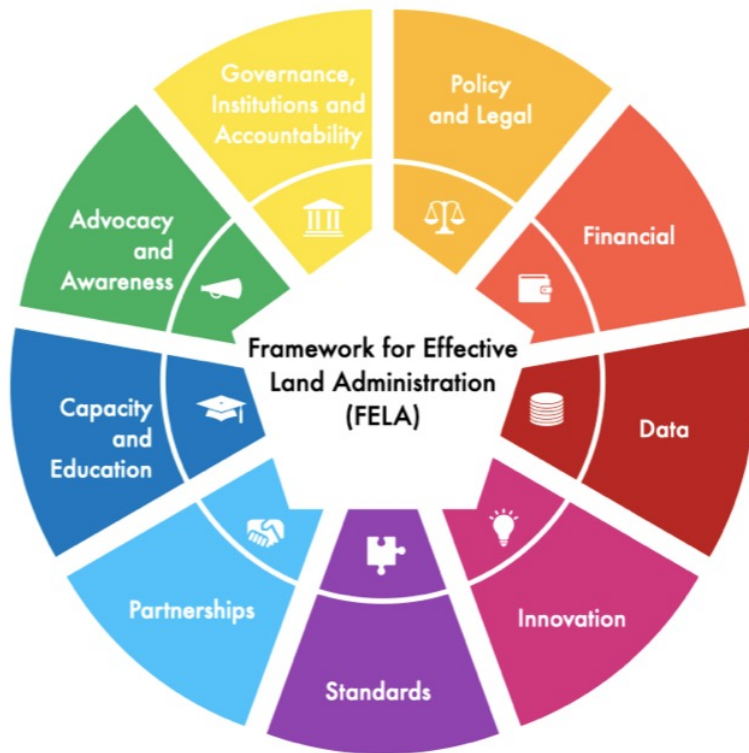
- 💡 Develop confidence and trust, promote security, safety, peace and peace building;
- 💡 Accelerate the proportion of population with tenure security;
- 💡 Allow economic development by supporting land value capture revenue systems that are equitable and transparent;
- 💡 Strengthen multi-disciplinary and multi-sectoral participation to achieve integrated geospatial information;
- 💡 Contribute to smart and resilient rural and urban societies, with equitable spatial/land use planning, and land development;
- 💡 Ensure participatory and inclusive land use and use planning;
- 💡 Promote the recognition of the inherent rights of indigenous and vulnerable peoples to their lands, territories and resources, and recognise collective traditions, customs and customary tenures, consistent with existing obligations under national and international law;
- 💡 Encourage efficient, sustainable and fair land markets, where appropriate, that take into account land tenure, value, use and land development aspects;
- 💡 Cater to all circumstances, situations and people – in times of peace and prosperity, in times of stress and hardship (including disaster and conflicts, forced migration and human displacement, poverty, food and water scarcity);
- 💡 Enable partnership, bringing and building together knowledge, skills and experiences on land tenure, land value, land use and land development; and
- 💡 Promote preparedness and resilience on climate change issues and support biodiversity, conservation and ecosystem sustainability.



Effective Land Administration in relation to 2030 Agenda and its 5 Ps



Implementing the Framework for Effective Land Administration



The Framework for Effective Land Administration (FELA), acts as an overarching policy guide, which provides a reference for Member States when developing, renewing, reforming, strengthening, modernizing, or monitoring land administration.

FELA with nine pathways aligned to the nine strategic pathways of the IGIF, seeks to provide the reference and guidance for Member States with regard to administering the relationships between people and land, and when establishing, strengthening, co-ordinating and monitoring their land administration nationally or sub-nationally.



Implementing the Framework for Effective Land Administration

Each pathway is built as:

Pathway IX: Advocacy and Awareness

Pathway link to SDGs	{ Advocacy and awareness are an essential element of any contemporary land administration initiative, program, project and resultant system. Land administration cannot succeed without stakeholder acceptance and support across society. Advocacy and awareness activities can help to create and maintain this backing. All prominent global land policy initiatives mention the importance of stakeholder identification, development of engagement strategies, and actively implementing and evaluating communication initiatives. This includes the SDGs and VGGTs.
Pathway link to IGIF	{ For IGIF, advocacy and awareness are recognized as a stand-alone strategic pathway. The strategic pathway recognizes that successful implementation of integrated geospatial information management relies on recognition and active participation from stakeholders and the general community. IGIF calls for engagement activities to be embedded and ongoing through the lifecycle of creation and implementation, in order to enhance the overall design and uptake of integrated geospatial information management.
Pathway in FELA	{ Meaningful engagement with all land stakeholders is integral for the implementation of an effective land administration. This includes actively undertaking stakeholder identification, planning and execution of engagement, undertaking integrated communication strategies, and monitoring and evaluation of those activities. Depending on the scale of system or project, this might include undertaking these tasks at community, national, regional, and international level.



Implementing the Framework for Effective Land Administration

in Mexico

THE GENERAL LAW OF CADASTRE AND PUBLIC REGISTRY OF PROPERTY

THE GLCPRP AND FELA



INEGI and SEDATU did a review in order to guarantee that the FELA precepts are considered in the Law



UN-GGIM

United Nations Committee of Experts on
Global Geospatial Information Management

Expert Group on
Land Administration and Management

Positioning geospatial information to address global challenges

ggim.un.org

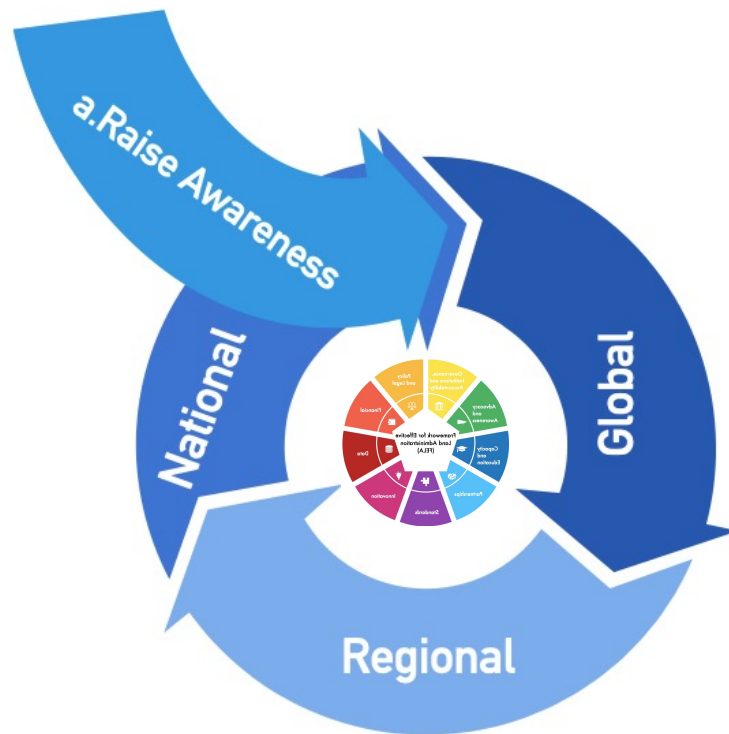
Implementing the Framework for Effective Land Administration



- a. Raise awareness and promote the usefulness of the FELA;
- b. Develop guidance to implement the FELA utilising the IGIF Implementation Guide;
- c. Develop an assessment mechanism to support the implementation of the FELA;
- d. Share and exchange knowledge, information, use cases, practices, experiences and examples; and
- e. Engage and collaborate with regional committees, in particular, UN-GGIM: Africa



Implementing the Framework for Effective Land Administration



Global

- Collate and disseminate examples, use cases, good practices
- Organise international seminars, forums and workshops etc.

Regional

- Engage regional committees of UN-GGIM
- Contribute to regional and sub-regional engagement and activities

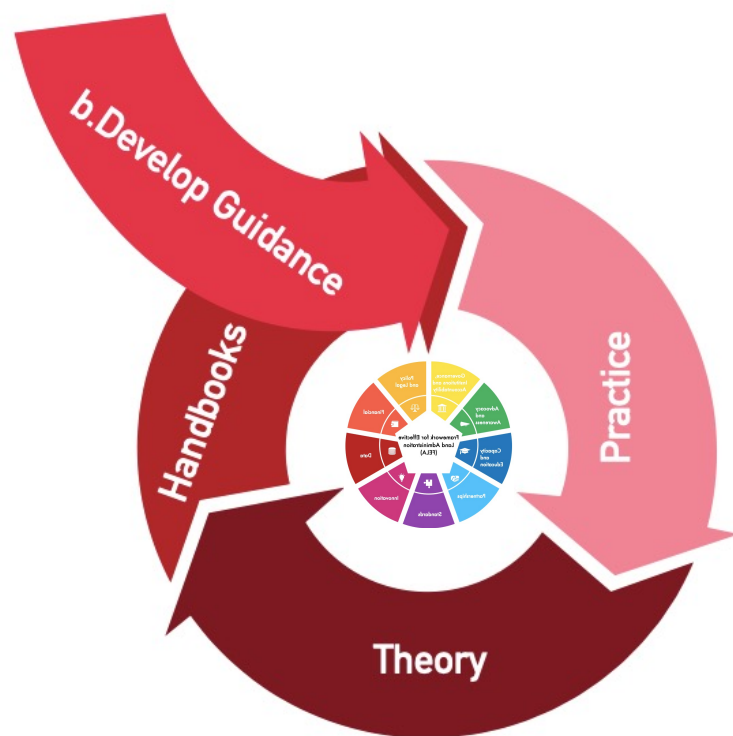
National

- Get FELA onto agenda of donor projects/local agencies
- Dialogue through projects with other land sector agents

- Get 'buy in' from policy-makers and political leaders



Implementing the Framework for Effective Land Administration



Practice

- Online platform with FELA as overarching framework
- Direct links to existing and globally recognized tools
- Provide forum for practitioners

Theory

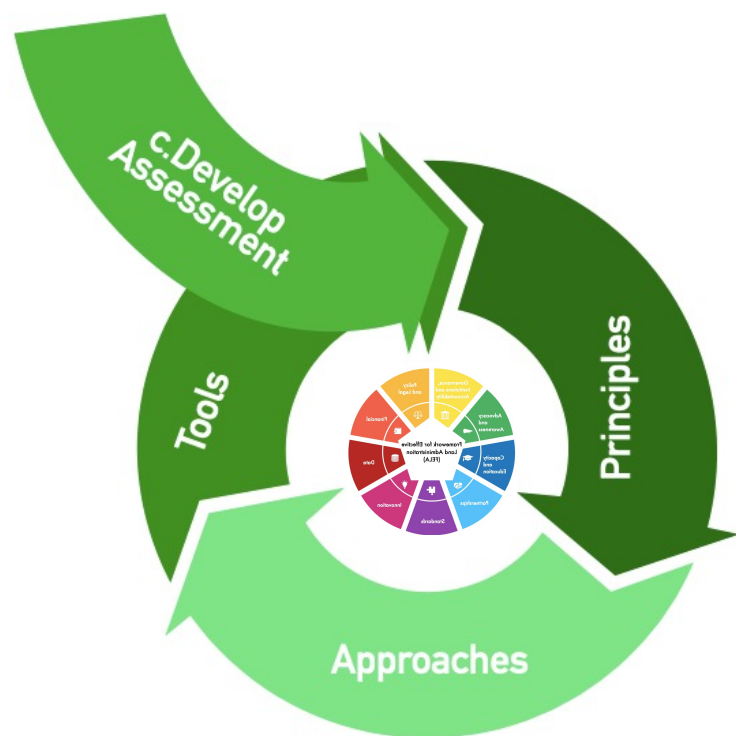
- Involve academic and research institutions
- Engage with other relevant domains (environmental etc.)

Handbooks

- Develop handbooks and checklists based on in-country experiences



Implementing the Framework for Effective Land Administration



Principles

- Elaborate guiding principles relevant to national circumstances
 - * *No intention to measure and rank one over another*

Approaches

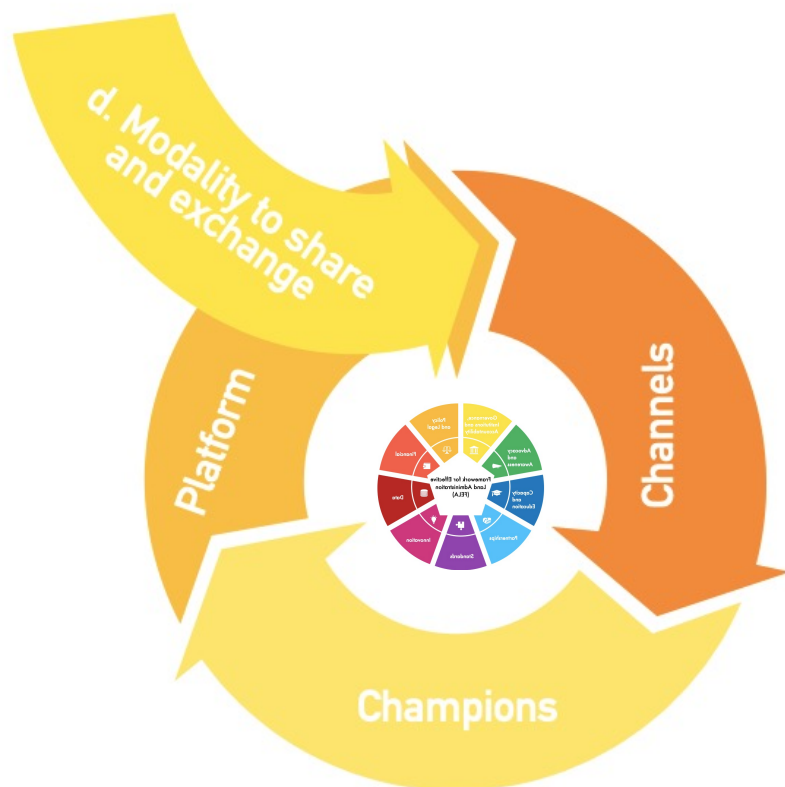
- 'No one size fits all'
- A suite of approaches that can be tailored to national circumstances for implementation
- Guidance to evaluate options according to country context

Tools

- Develop 'light weight' resource materials, references or tool – keeping in mind country context



Implementing the Framework for Effective Land Administration



📞 Channels

- Identify available and required channels
- Formal and Informal
- Strategic messages and value propositions

🏆 Champions

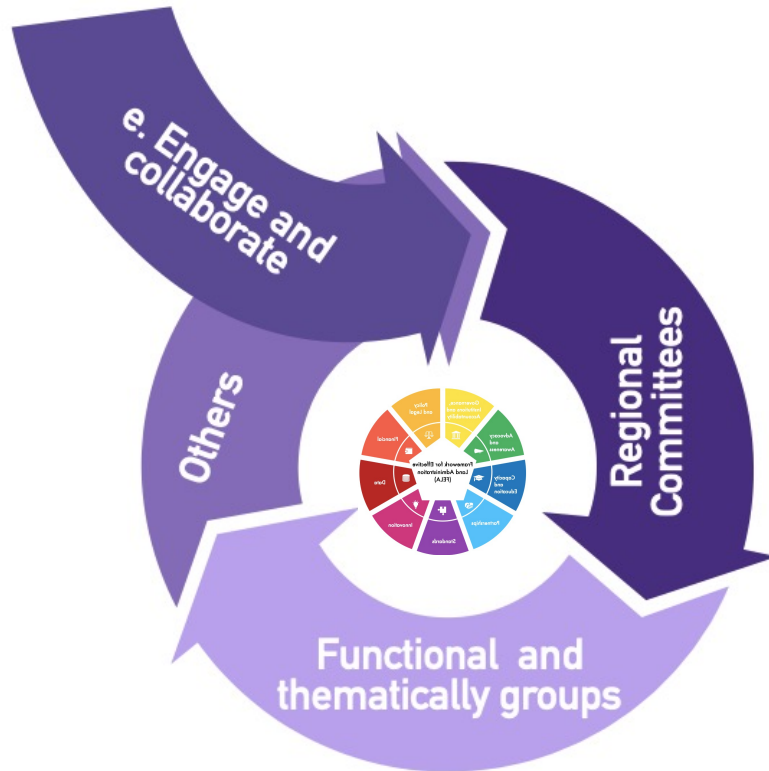
- Identify national and local champions
- Ensure those champions share and exchange experiences and lessons learnt

📱 Platform

- Use mechanisms/platforms which are open, accessible, affordable and inclusive



Implementing the Framework for Effective Land Administration



- 🌐 **Regional Committees**
 - Regional Commissions
 - UN system entities
 - Regional training and research institutes
- 🌐 **Functional and thematical groups**
 - Standards development organizations
- 🌐 **Others**
 - Civil society
 - International and Regional Development organizations (donors)
 - Philanthropic entities



Thank You!



UN-GGIM

United Nations Committee of Experts on
Global Geospatial Information Management

Expert Group on
Land Administration and Management

Positioning geospatial information to address global challenges

ggim.un.org