

REPORT ON THE CZECH CADASTRE IN 2004

*Libor Tomandl,
Cadastral Office in Karlovy Vary, Czech Republic*

Contents:

- | *Basic information*
- | *Organizational and territorial changes*
- | *Innovations in administration and providing information*
- | *Improving the quality of the cadastre*
- | *EU entry*
- | *Basic statistical data on the Czech cadastre*
- | *Conclusion*

1. Basic information on the Czech cadastre

- | IS integrates the former *Land Cadastre* (technical instrument)
and the *Land Registry* (legal instrument)
- | Main principle: compulsory title registration
- | Administration: CUZK
- | Cadastral documentation:
 - Geodetic /survey/ information file
/graphical documentation partly in the form of vector digital cadastral maps/
 - Descriptive information file
/computerized textual information on registered objects, subjects and interests in land/
 - Surveying and measuring documentation
 - Collection of deeds
- | From 2001 Enhanced IS of the Cadastre of RE
/new technology, architecture and application SW/

2. Present organization of the state sector

Central body: **Czech Office for Surveying, Mapping and Cadastre**

Regional executive bodies: **Cadastral Offices (14)**

Subordinated district bodies: **Cadastral Workplaces (111)**

Supervision: **Surveying and Cadastral Inspectorates (7)**

Special institutions: **Land Surveying Office
Research Institute**

Number of employees (2004) total: **5592**

Cadastral Offices: **4883**

Funding: **state budget**

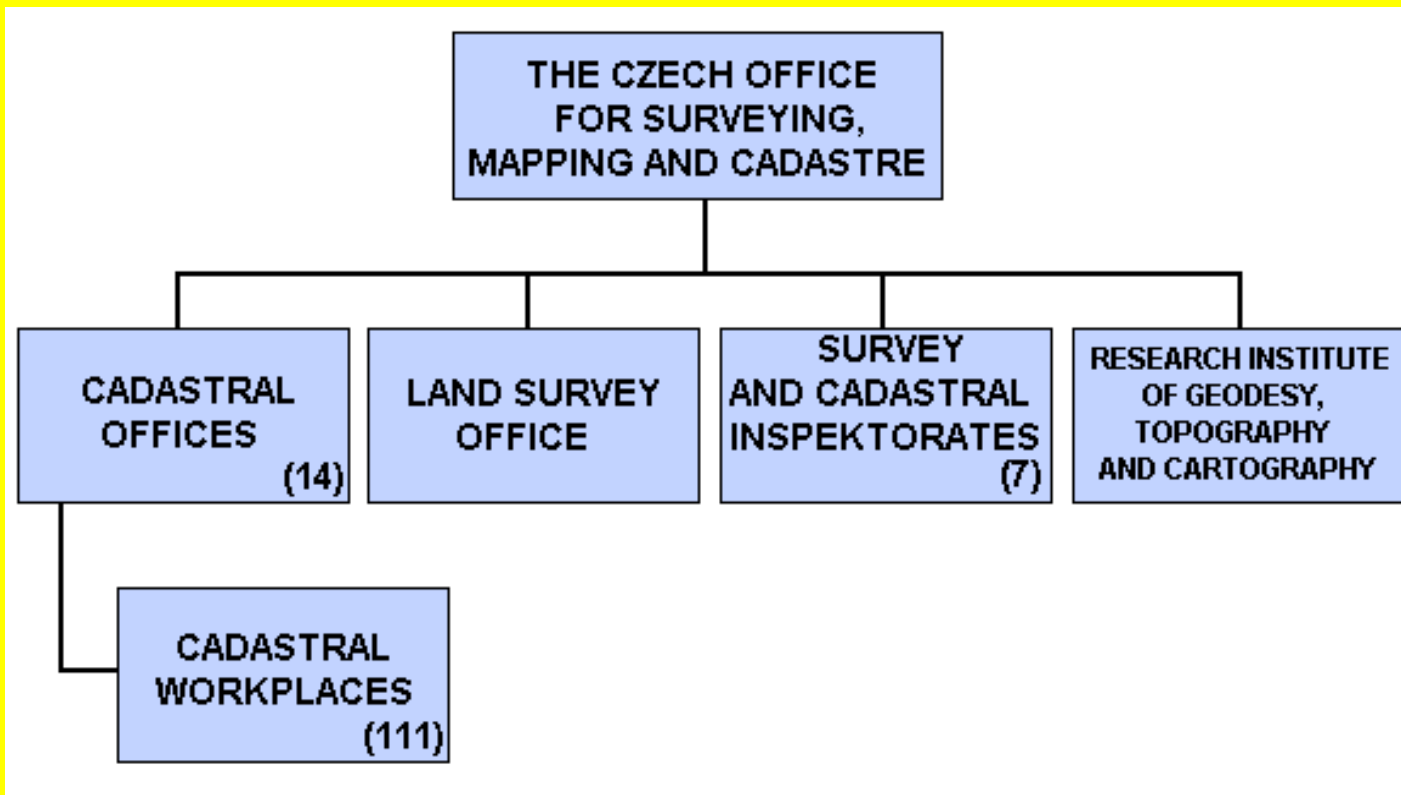
2003 expenditure of the sector–total: **\$ 82 million**

(salaries **\$ 44 million)**

revenue - paid services + fees: **\$ 25 million**

(services free of charge **\$ 13 million)**

Organizational chart of the CUZK Sector



3. Innovations in administration and providing cadastral information in 2004

- | *New web pages of CUZK, Cadastral Offices and Cadastral Workplaces*
<http://www.cuzk.cz/>
- | *Electronic filling in cadastral forms*
e.g. <http://www.cuzk.cz/kp/kvary/>
- | *Free Internet access to cadastral information:*
 - *Standard access for municipalities and regional self-governments*
 - *Limited access for the public**<http://nahlizenidokn.cuzk.cz/>*
- *Amendment of the Law on Electronic Signature*
/electronic sign-authorized providing electronic information and data exchange among IS/

4. Improving the quality of the cadastre

Renewal of cadastral files

- 3% of the territory yearly
- methods:
 - new mapping
 - remaking of the survey documentation to the digital form
 - land consolidation

Densification of the horizontal control

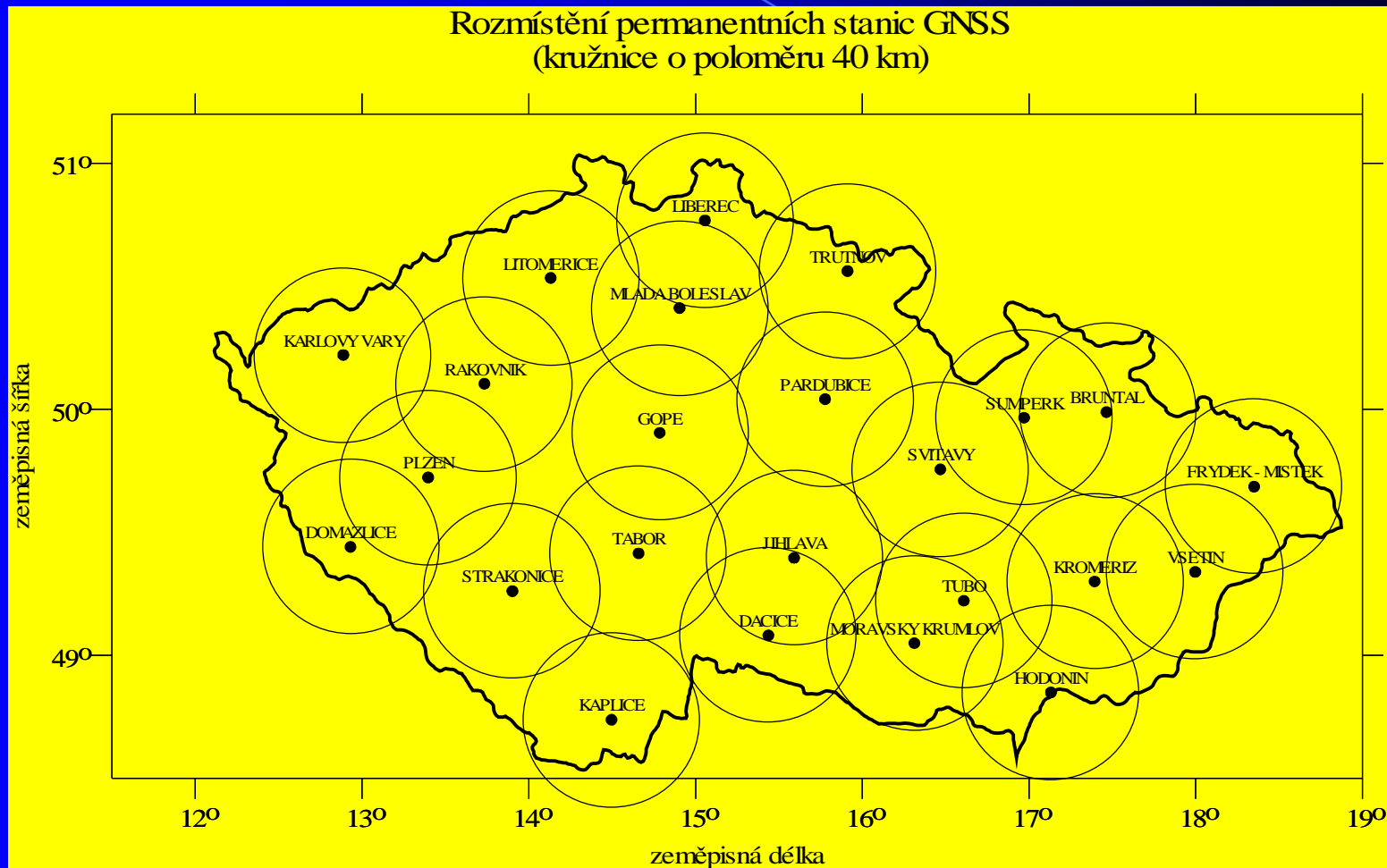
in 2004 on the whole territory of the CR

Free Internet access to the database of horizontal control (DATAZ)

Permanent GPS network

- 22 GPS permanent stations on buildings of Cadastral offices
- the coverage radius each of them about 40 kilometres
- completion in 2005

Permanent GPS network



*since 1.1.2004 – the obligation to measure all cadastral changes
in the state coordinate system (S-JTSK)*

┆ *Digitization of the graphical cadastral maps at the
scale 1:2880*

- origin from 1835-1855 in the traverse cylindrical
Cassini-Soldner projection*
- 70 % of the territory*
- June 2004 – the Instruction and the Technology
process for the digitization of the maps 1:2880*
- result: legal and technical basis for all cadastral
survey activities*

5. EU Entry

- | *Performance of private survey activities and verification of results of land survey activities are regulated professions in the CR*
- | *All conditions for land survey activities of EU member state citizens are on: <http://www.cuzk.cz> in English version section “Approval of EU member states citizens’ certifications”*
- | *The application form for approval of professional qualification is on: http://www.msmt.cz/uok_doc/cz/zadost.rtf*

6.1 Basic statistical data on the cadastre

Table 1, Recounted total number of employees in the state sector of the Czech Cadastre

Body	Unit	2002	2003	2004
CUZK	employee	70	70	157
Cadastral Offices		5,107	5,103	4883
Inspectorates		92	93	89
Land Office		407	410	463
Research Institute		(49)	(49)	(49)
Total			5,676	5,676

6.2 Basic statistical data on the cadastre

Table 2, Data about objects and subjects of the Cadastre in the Czech Republic

Data	Unit	2001	2002	2003
Territory	km ²	78,865		
Inhabitants	million	10.3		
Cadastral units	one unit	13,079	13,059	13,027
Cadastral parcels	million	14.733	15.147	15.640
Parcels in simplified inventory	million	6.783	6.476	6.108
Owner's folios	million	4.731	5.701	5.005
Registered buildings	million	3.612	3.613	3.618

6.3 Basic statistical data on the cadastre

Table 3, Settled Demands on Cadastral Offices

Data	Unit	2001	2002	2003	2004 (1-6)
Entries into the Cadastre	case	380,521	480,801	498,229	294,231
Records in the Cadastre		415,900	443,000	485,161	290,776
Requests for official cadastral information	request	1,292,385	1,518,721	1,569,246	925,322
Confirmed legal surveys	geometric plan	110,800	139,000	138,537	70,216
Cadastral maps converted into digital form	cadastral unit	440	473	571	139

Conclusion