



The National Integrated Land System (NILS)

Larry Money
June 24, 2005



Topics

- Purpose/Goal
- Functional Components
- Design
- Data
- Question

BLM's Responsibilities (OMB A-16)

- Public Land Records 
 - Public land conveyance data
- Federal Land Ownership Status 
 - Real and mineral property
- Cadastral 
 - Public Land Survey System

NILS Facts and Figures

- BLM manages:
 - 262 million surface acres
 - 700 Million subsurface acres
- 130 million parcels/ 28,000 PLSS Townships
- ~ 250 survey and measurement users
- ~ 900 parcel management users
- USDA Forest Service manages 8.5 percent of U.S. land

Problem to Solve

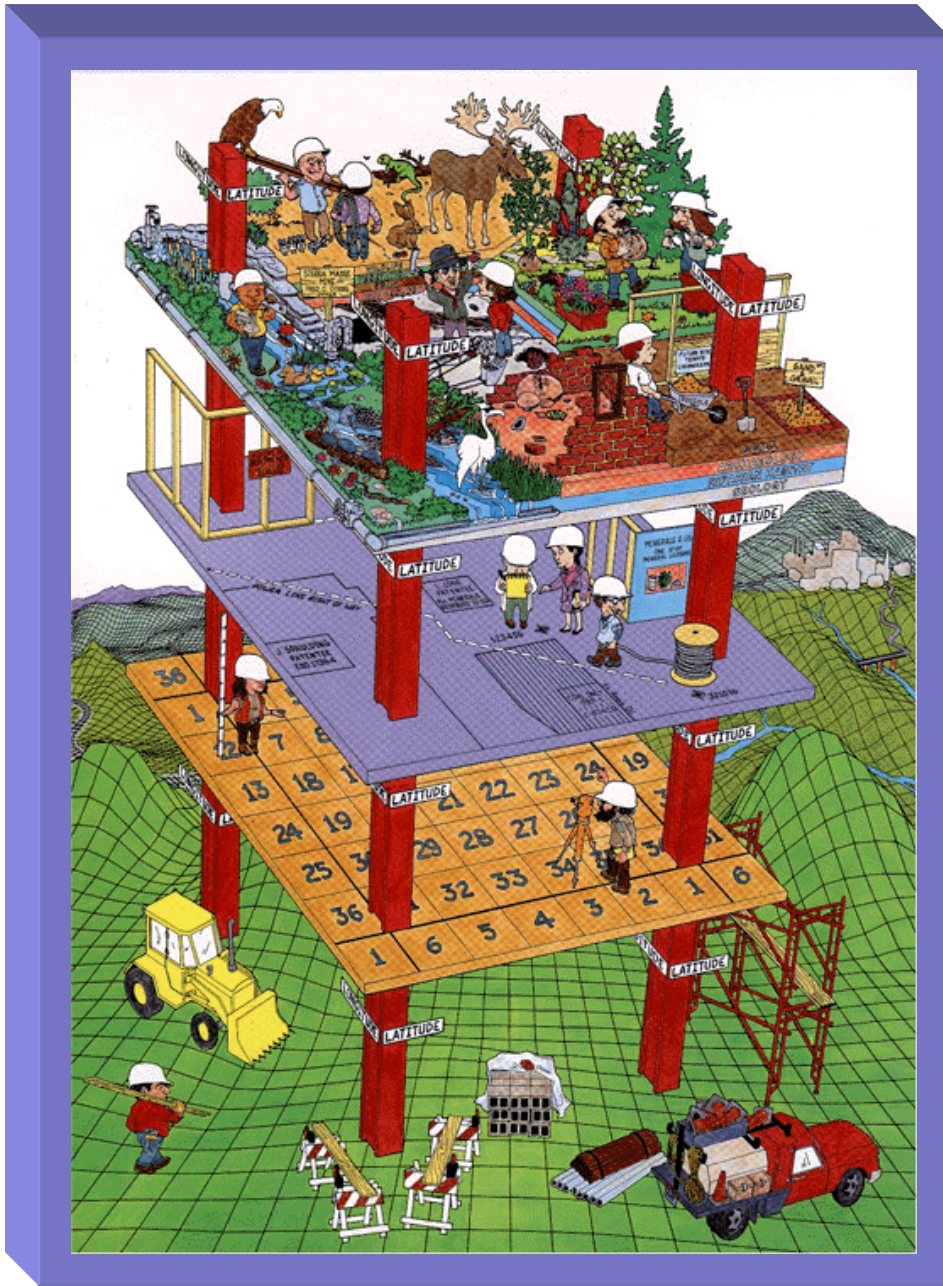
- Poor spatial accuracy of base GIS features is a problem compounded by the fact that many other layers are constructed from these base features
- Multiple programs in the PLSS Maintenance process



Goal

- A simple system to create and manage survey geometry in ArcGIS
- The system must be extensible, follow survey methods, improve existing datasets, and maintain spatial relationships between the survey networks and associated GIS data



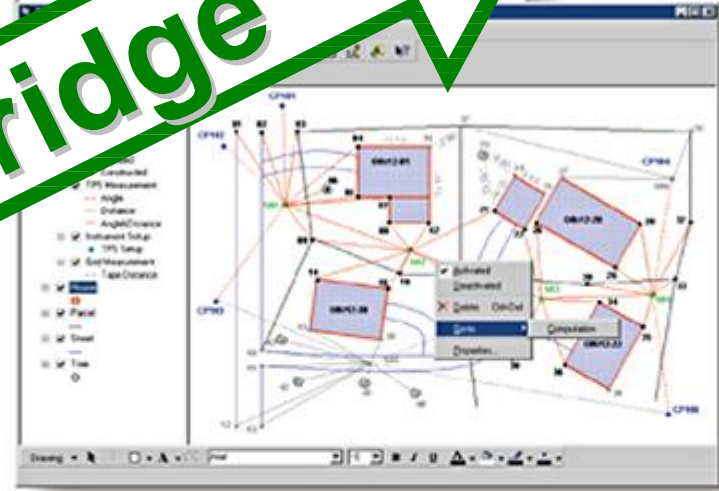
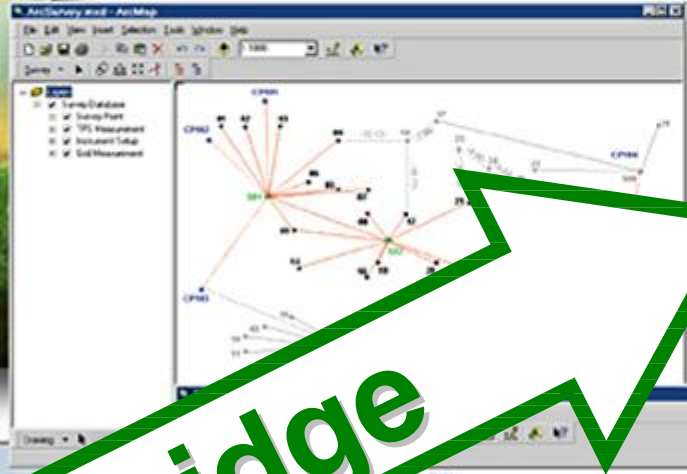


1990's Vision

GIS

Bridge

Survey

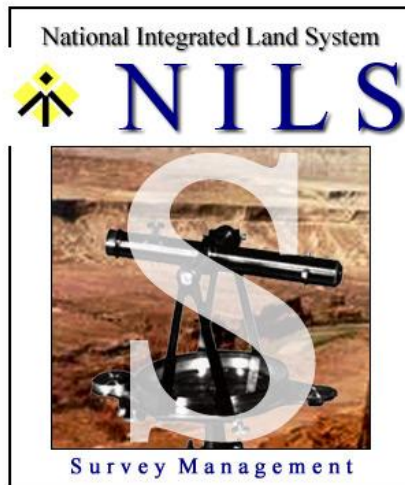


Geodata.gov

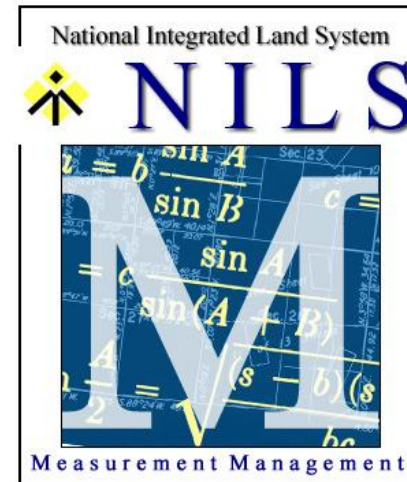
- Part of the [Geospatial One-Stop E-Gov initiative](#) providing access to Federal, State, and Local geospatial data and information.



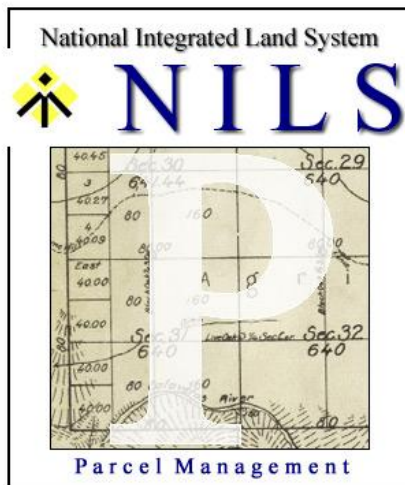
NILS Functional Components



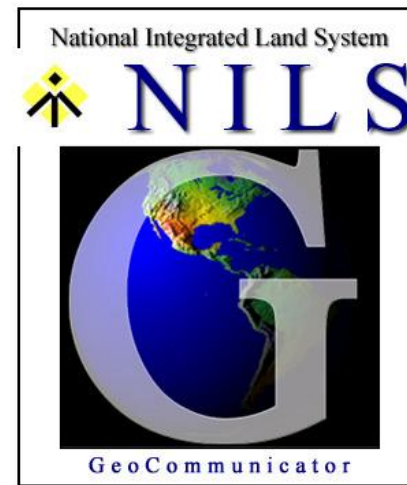
Survey Management



Measurement Management



Parcel Management



GeoCommunicator

Survey Management

This will support the capture of measurement features and metadata directly into a **GIS database format**.

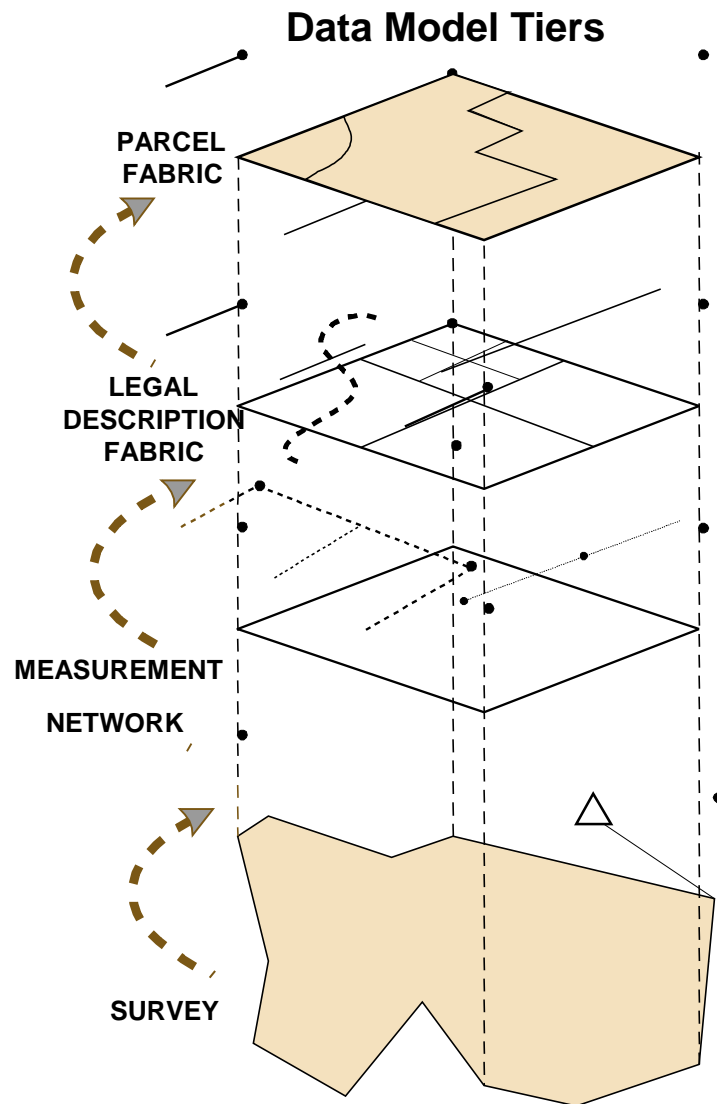
The goal is to minimize the need for data conversion and reconstruction as measured features are incorporated into the land records management system.



011 1010 1100 1101 0011



Measurement Management



Provides the foundation for the legal description and parcel fabric tiers.

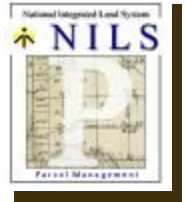
Integrated maintenance of cadastral data is made much more efficient when **geometry** can be **shared**.

Interpretation of (1) the **reliability** of each point position and (2) where data editing is needed.

New **data** can be **added**, and data elements that do not contribute to the optimal solution can be **removed**.

Any **area** can be selected and **readjusted**, e.g. to update point positions affected by newly-added data.

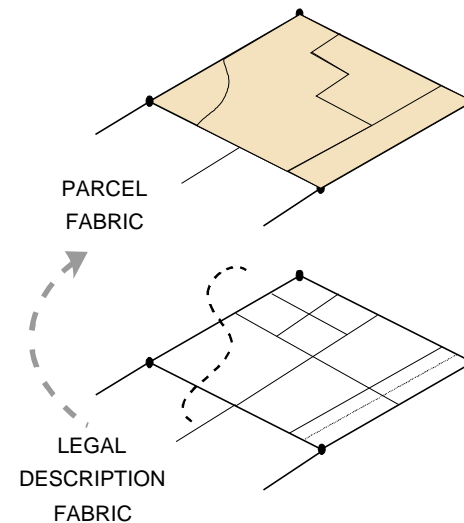
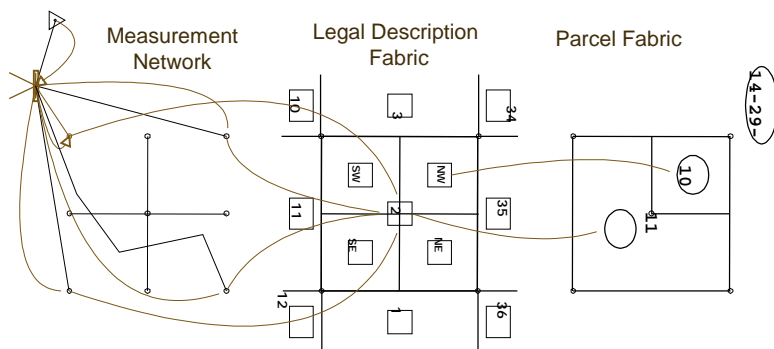
Parcel Management



Provides a process for managing land records and cadastral feature data stored in the database model.

Provides custom feature classes, tools, and procedures for editing land records in a transactional, history-tracking environment.

Support will be provided to allow users to construct and edit legal description fabrics and to create required parcel fabrics from them. Parcel fabrics may include ownership, land use rights, tax assessment, and others.

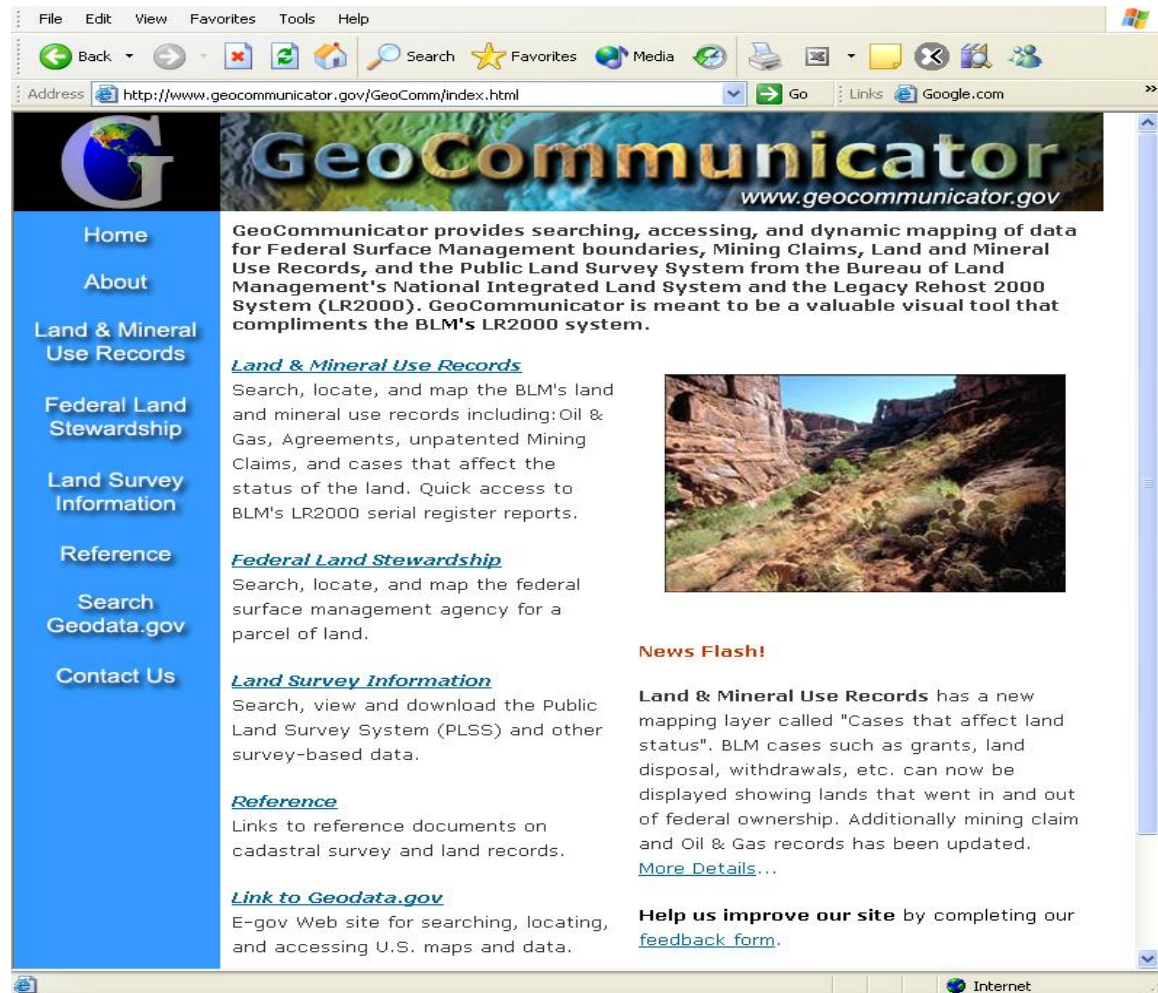


GeoCommunicator

www.geocommunicator.gov

Internet Site

- Land Survey Information System
- Federal Land Stewardship
- Land & Mineral Use Records
- Reference Data

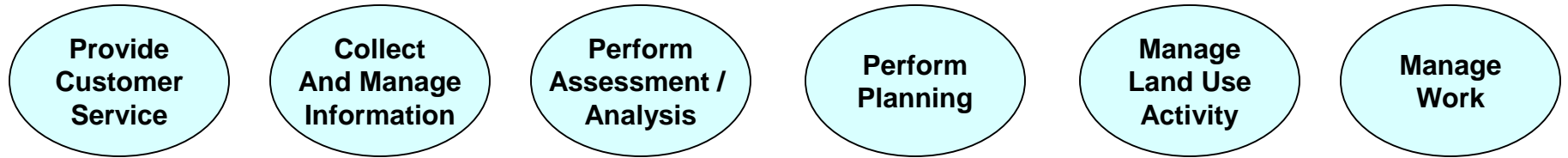


NILS

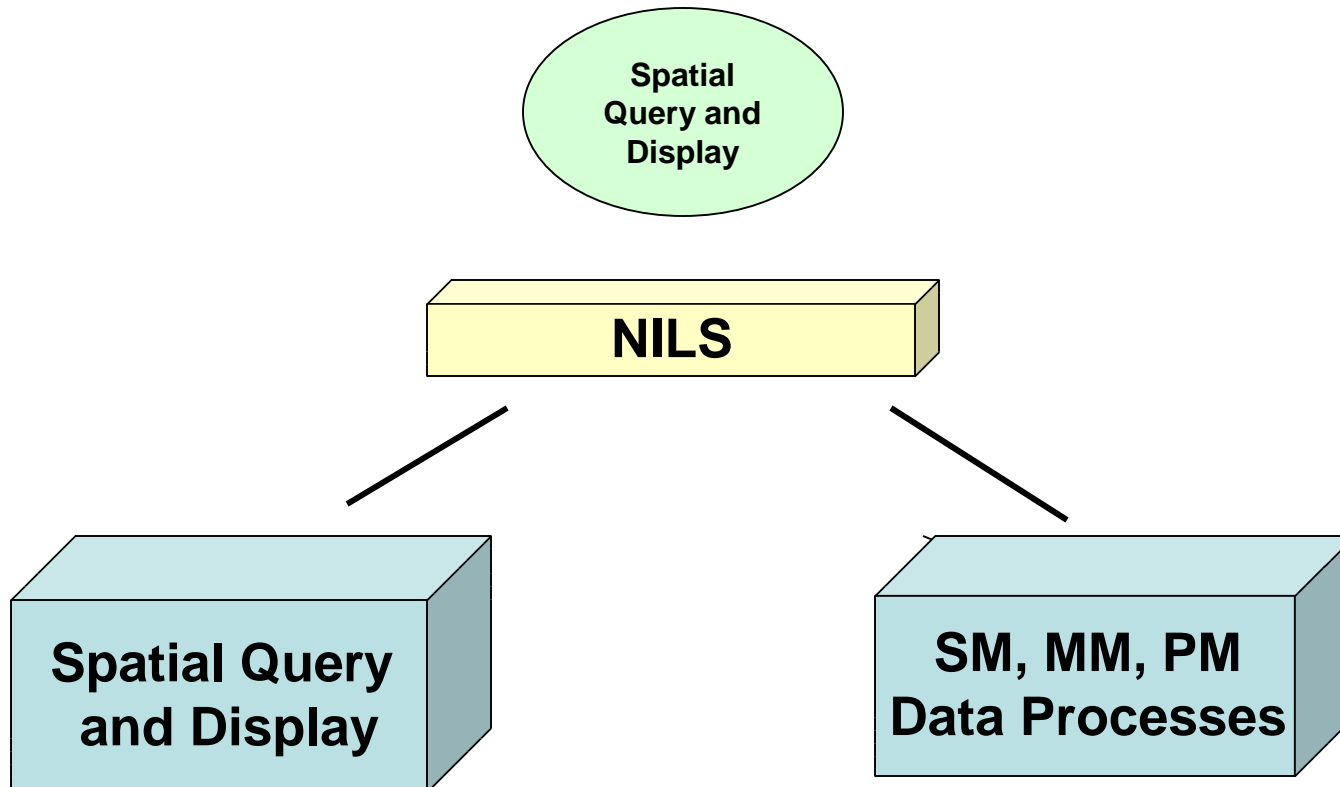
- NILS comprises transactional and publication components:
 - The ArcGIS implementation for creating and maintaining Survey, LD, and Parcel data is the *transactional* component
 - The ArcIMS implementation for viewing, querying, and downloading data is the *publication* component

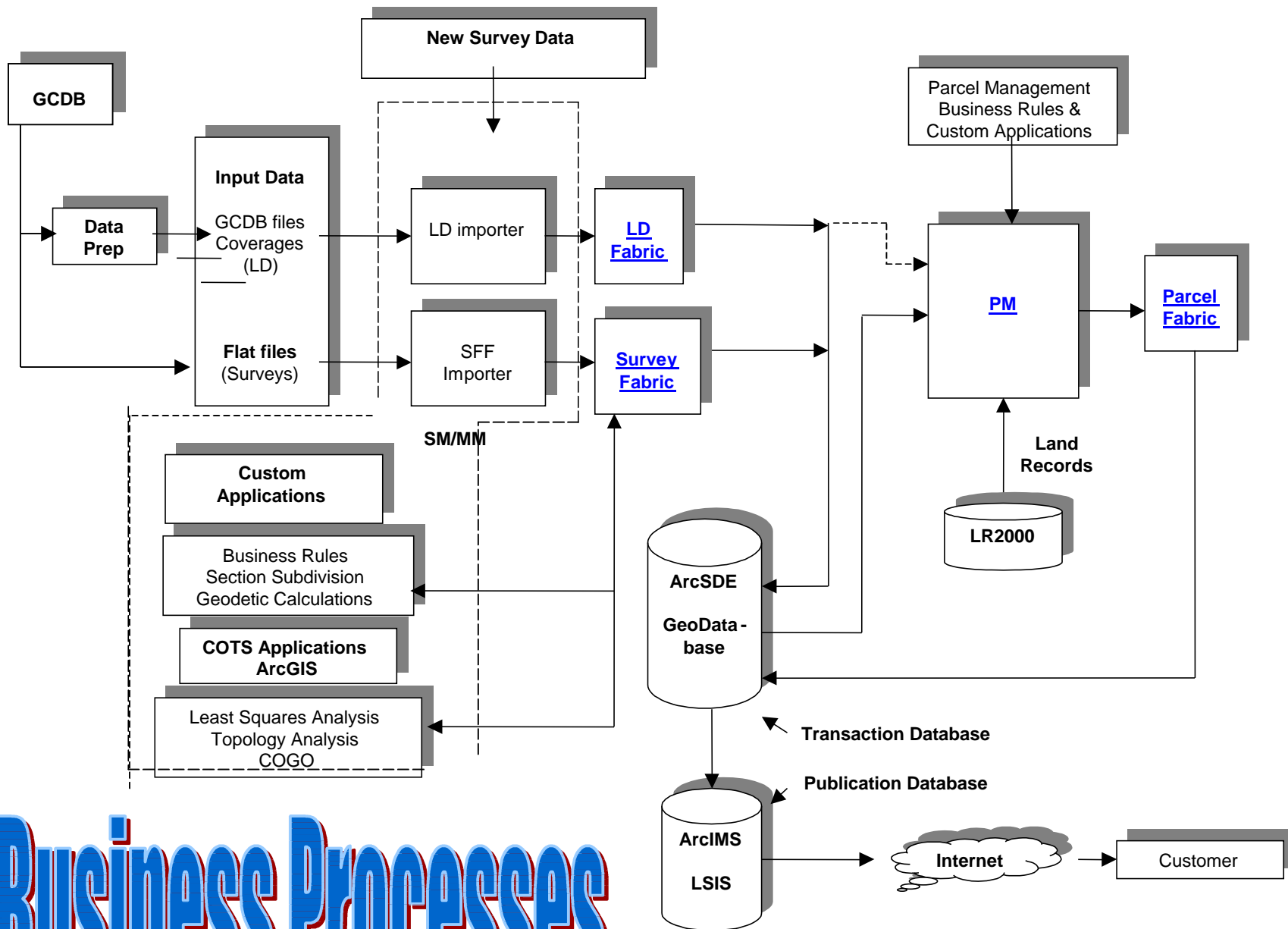
Design

Higher Level BLM Business Processes



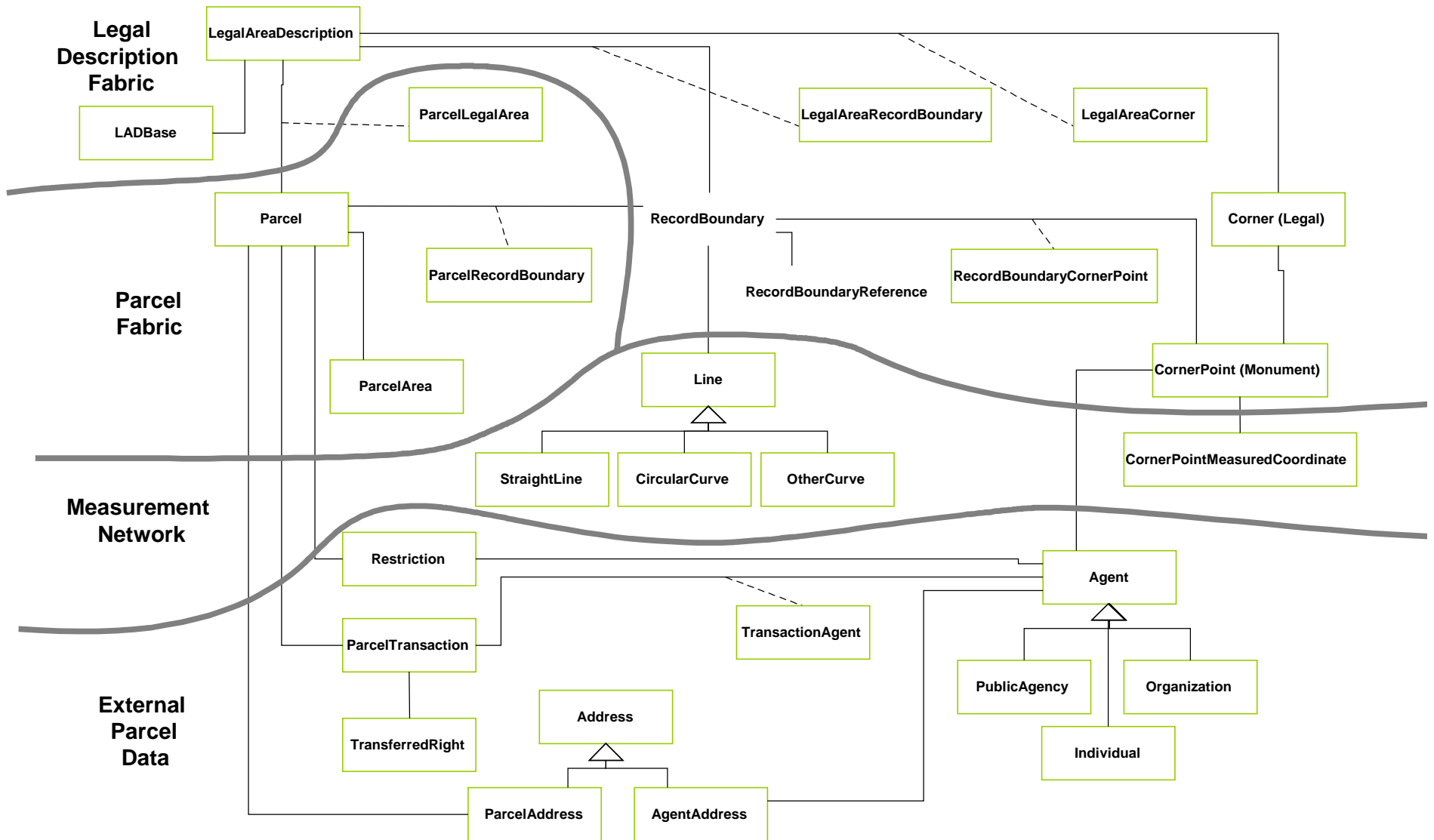
Business Process Components



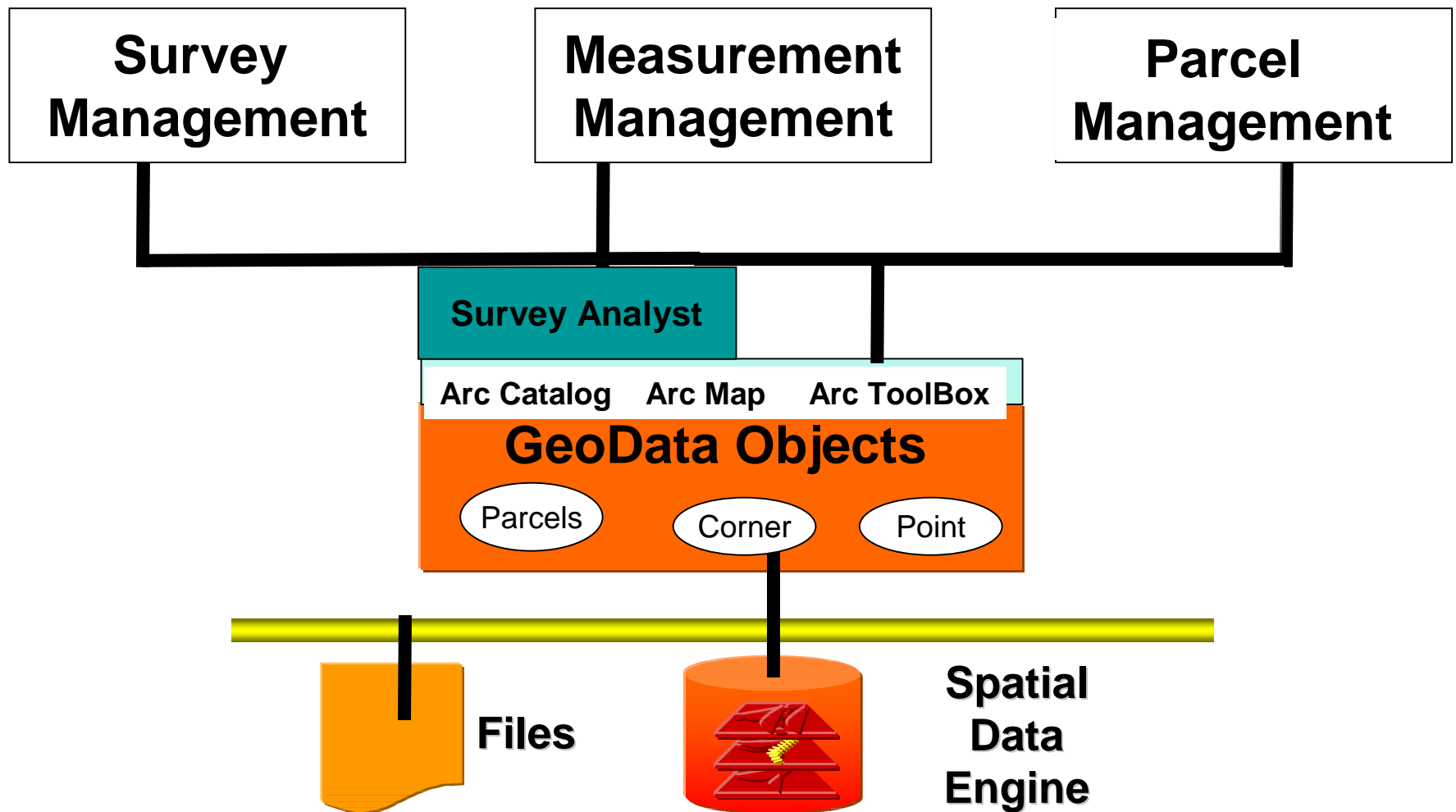


Business Processes

NILS Analysis & Design **FGDC Cadastral Standard**



NILS Software Architecture



Technology

- Primary components:

Arc SDE 9.0, Arc GIS 9.0. Arc IMS 4.0

Informix 9.4

Apache Tomcat 4.1

IIS

Java SDK/JRE 1.4

FME/Spatial Direct

BASS2

Citrix XPe

Storage over 1 Terabyte

2 Large database tables over 20 million records each

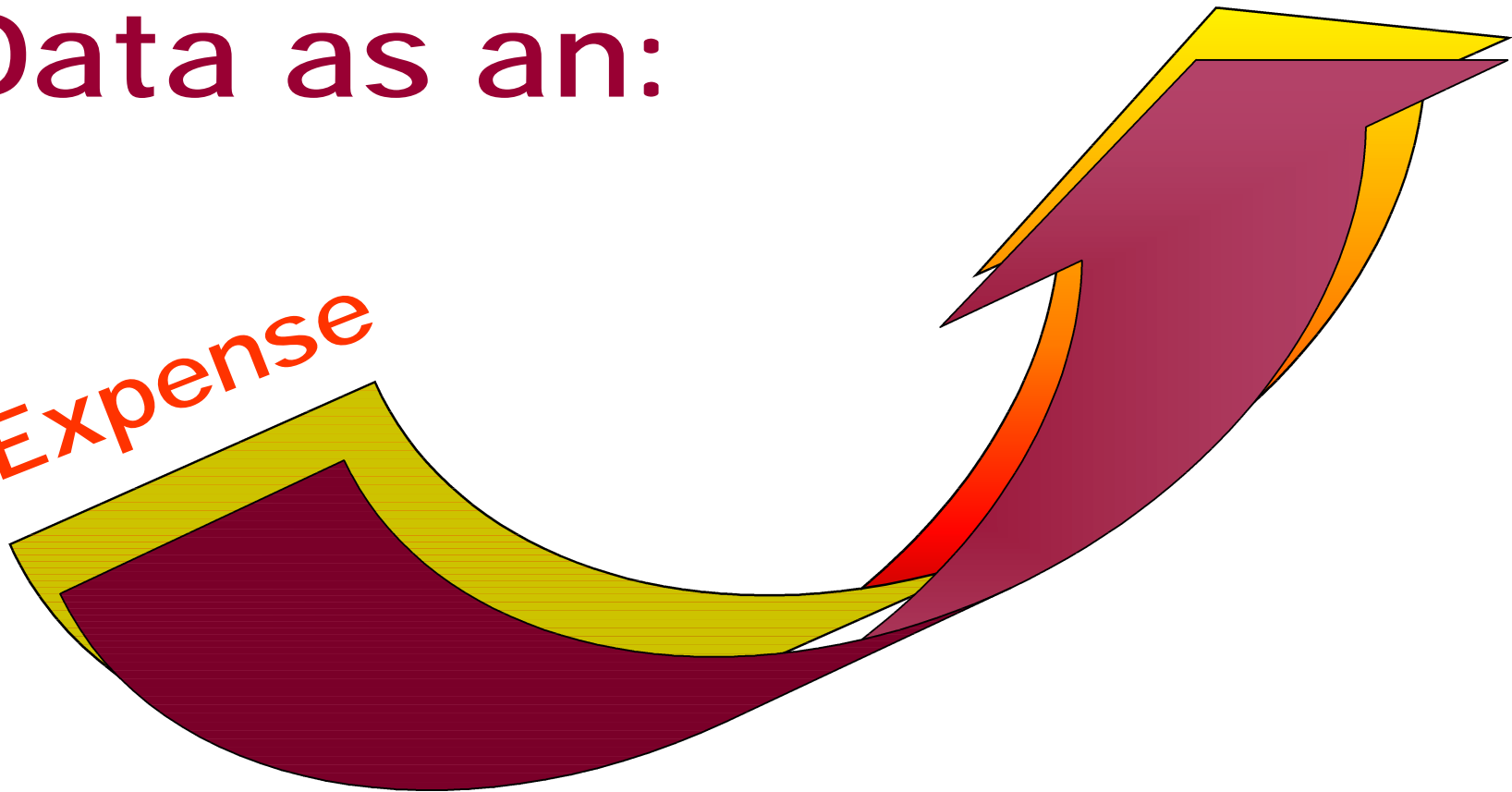
Data Management

Change In Paradigm

Data as an:

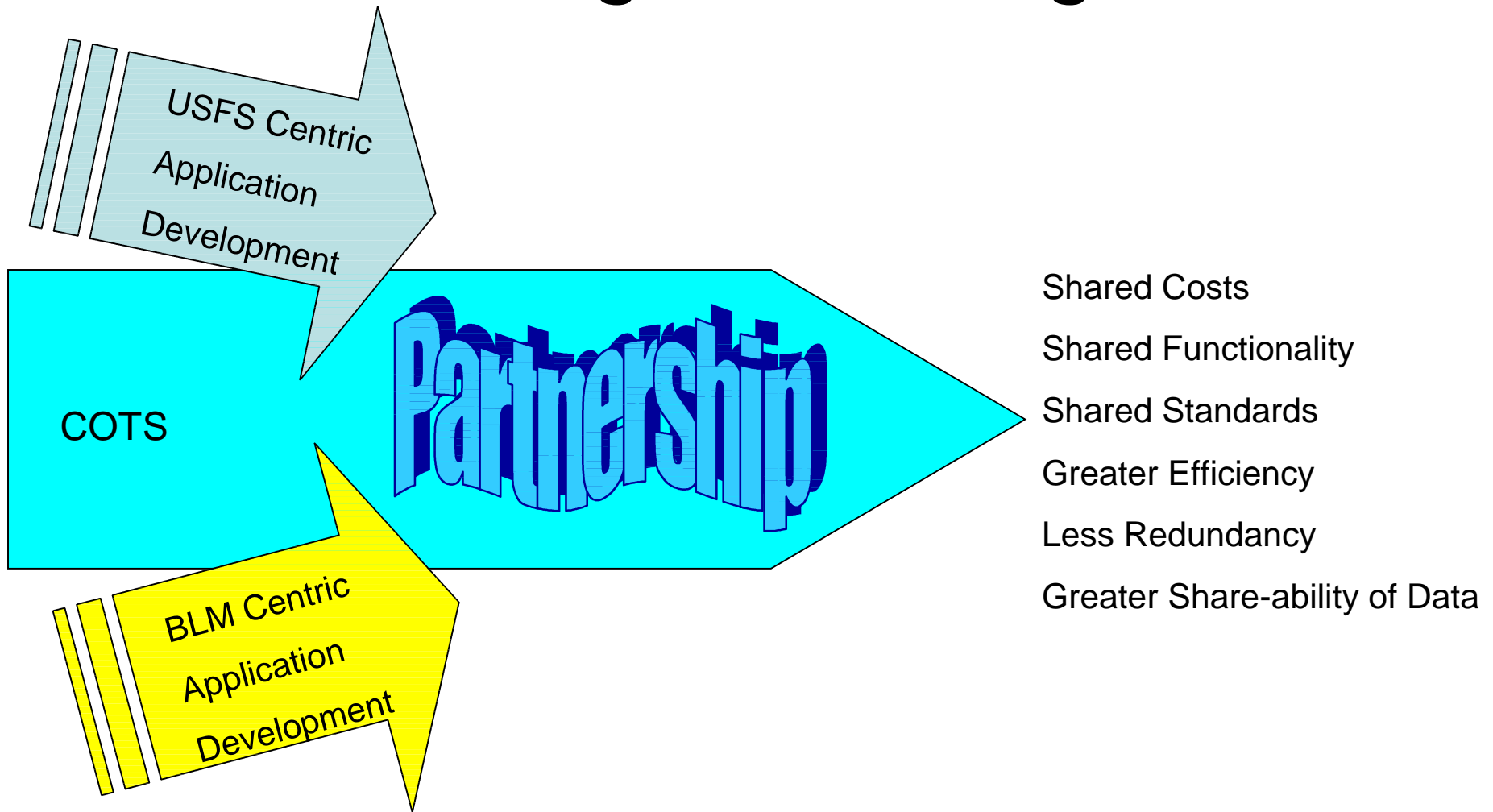
Expense

Asset



Moving from an **EXPENSE** to an **ASSET**

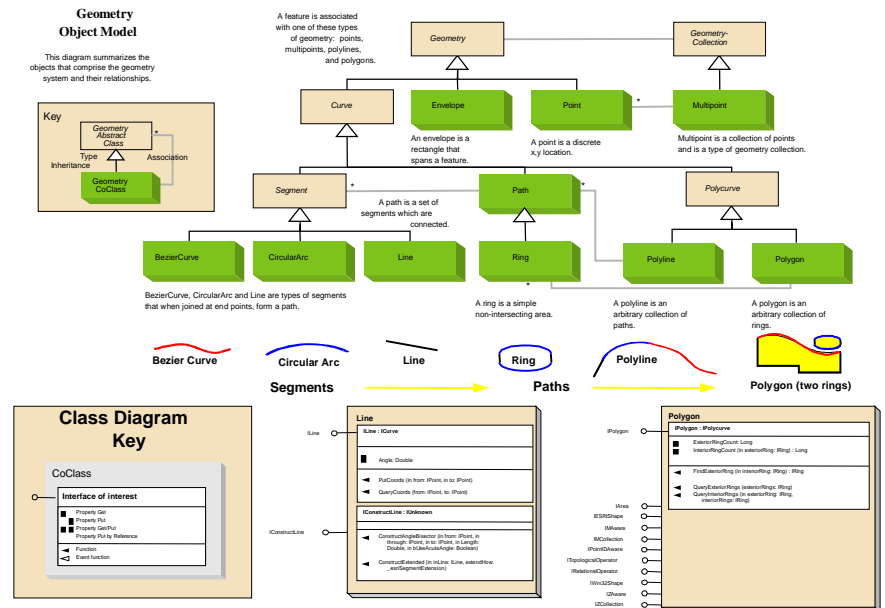
Change In Paradigm



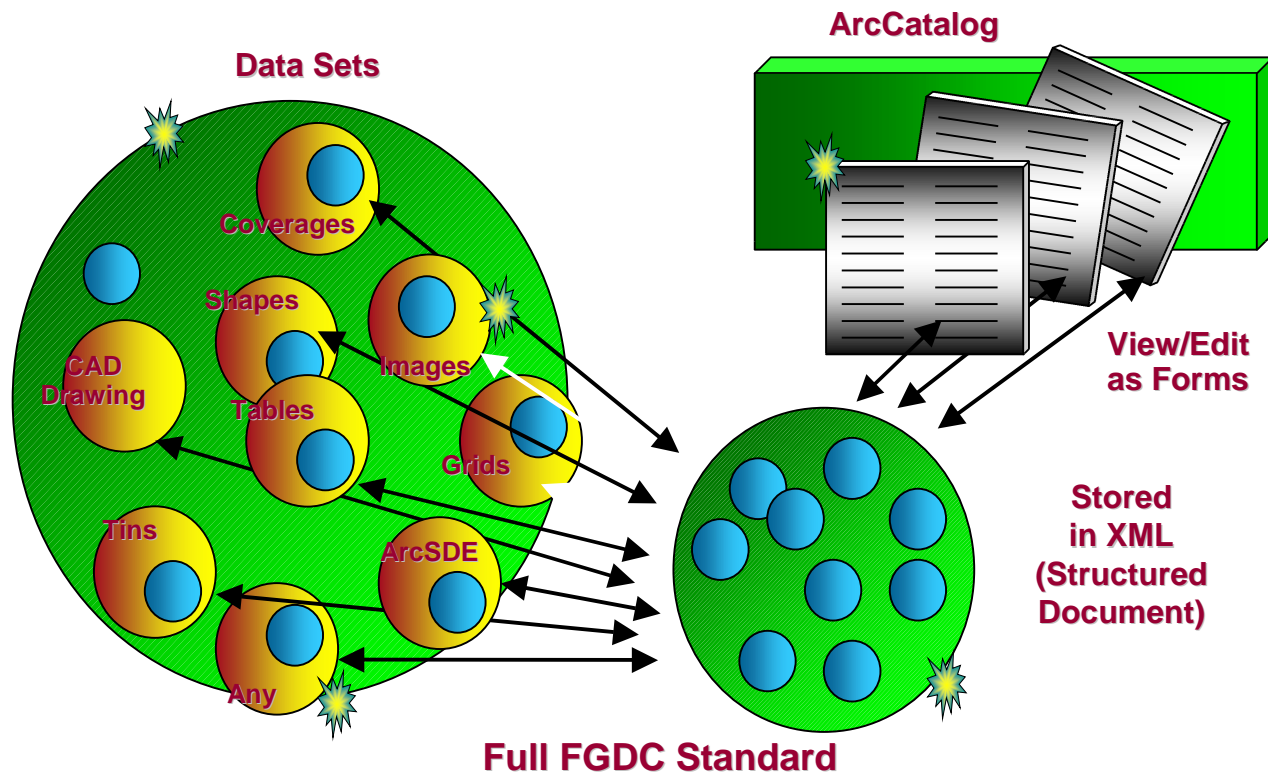
The Use of Standards

- Federal Geographic Data Committee (FGDC) Cadastral Data Content Standard
- American Land Titles Association (ALTA)
- Manual of Instructions for the Survey of the Public Lands of the United States, 1973

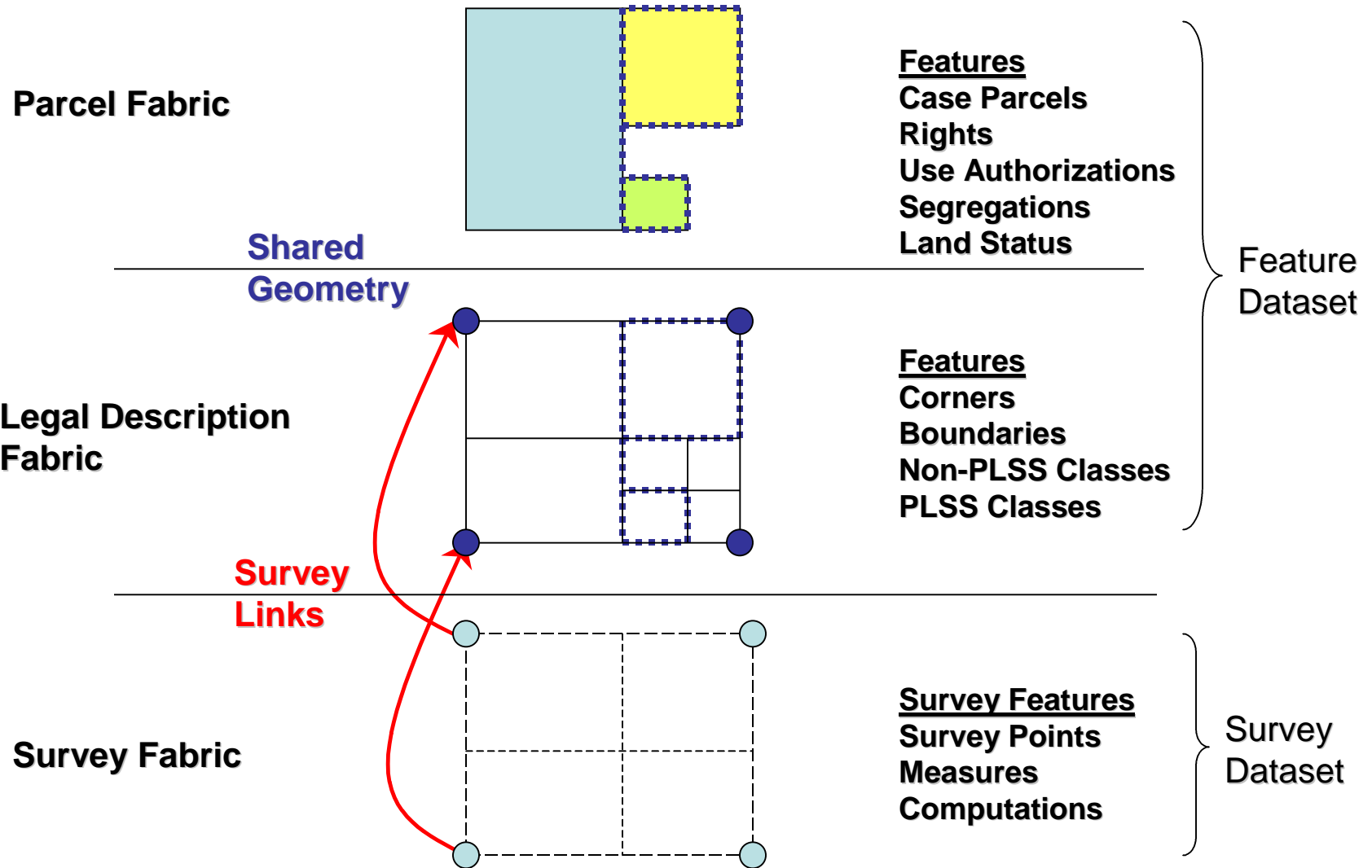
Geodatabase designed to reflect existing standards and to work in an object oriented technology environment.



Meta Data Must Be Associated With All Data Sets

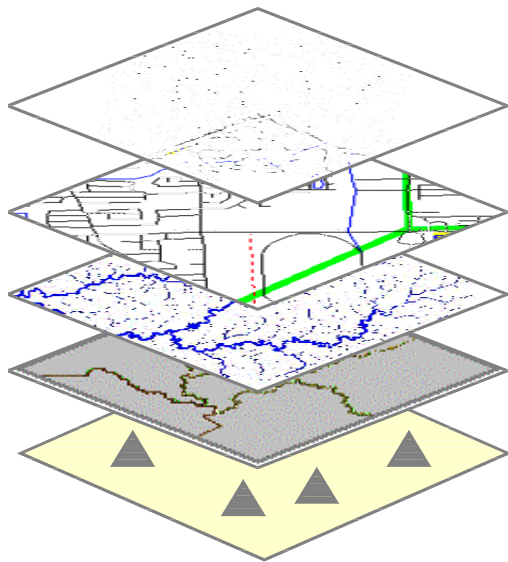


NILS Conceptual Data Model



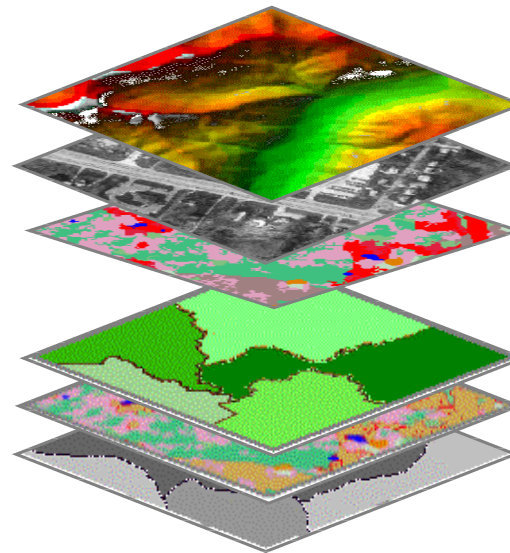
GIS Data (Before Survey Analyst)

Vector Data Layers



Land Ownership
Transportation
Surface Waters
Boundaries
Geodetic Control

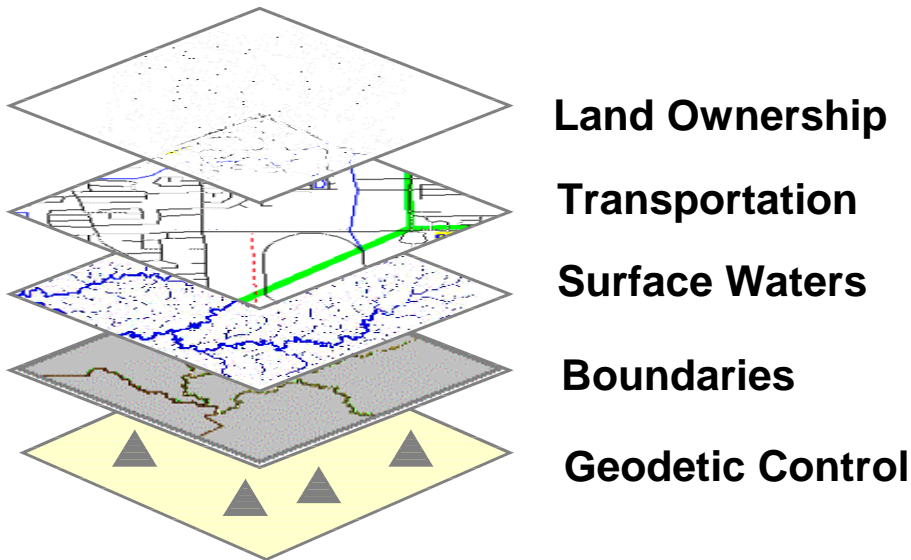
Raster Data Layers



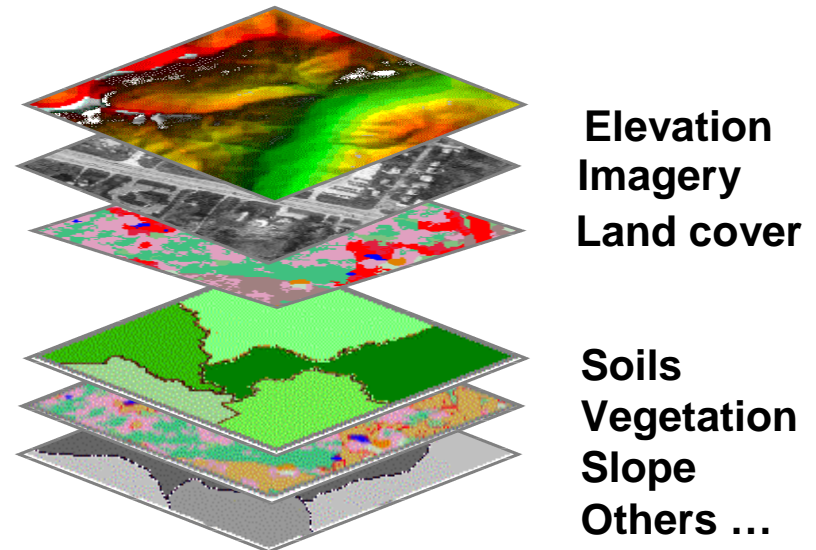
Elevation
Imagery
Land cover
Soils
Vegetation
Slope
Others ...

GIS Data (After Survey Analyst)

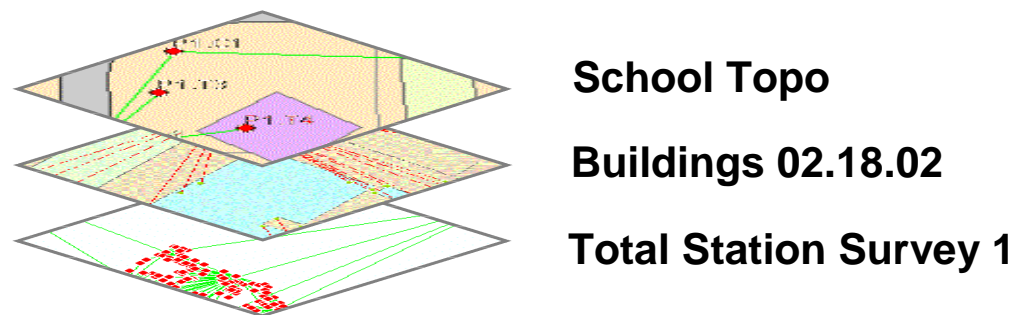
Vector Data Layers



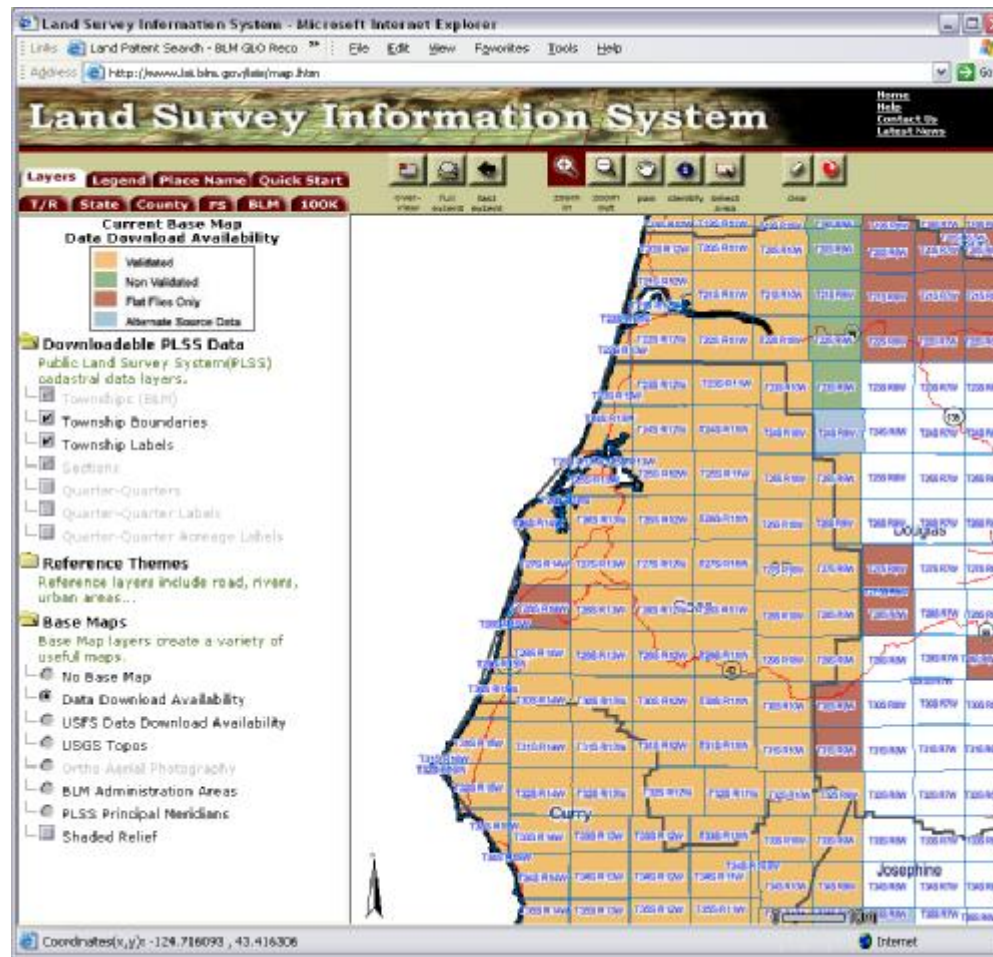
Raster Data Layers



Survey Data Layers (Projects)

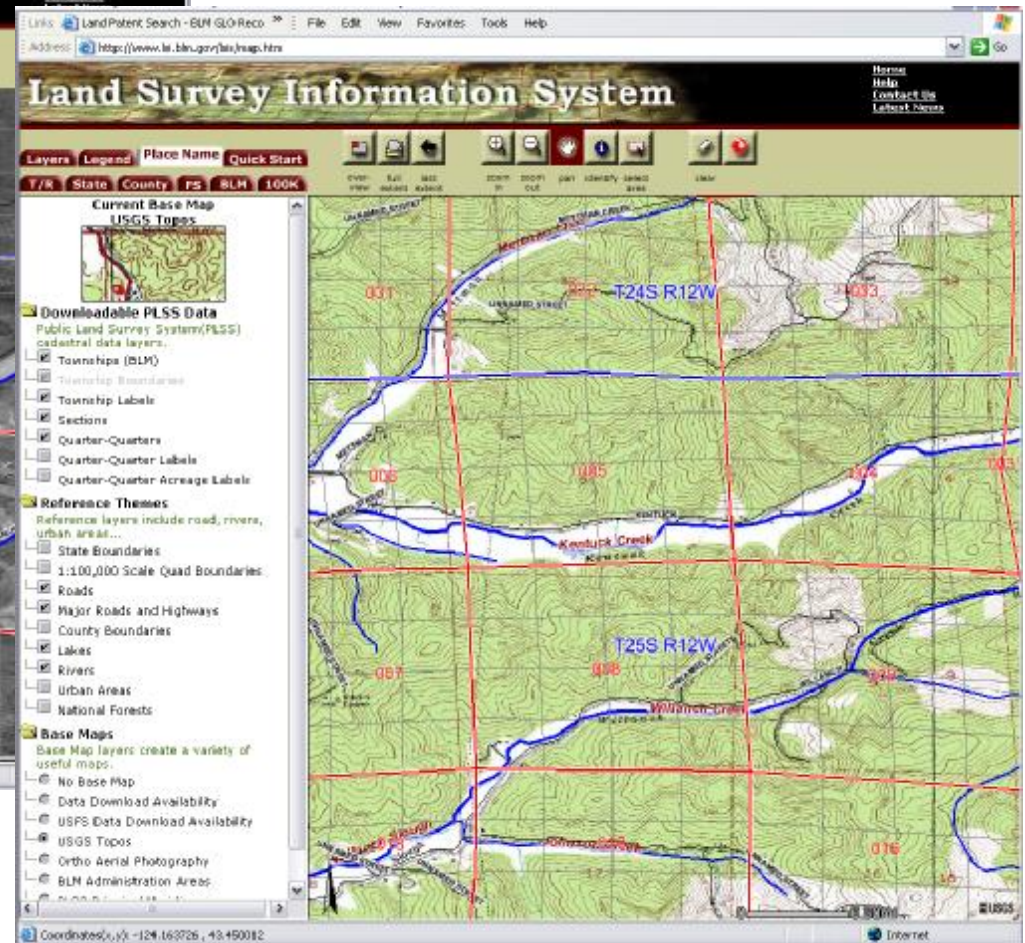
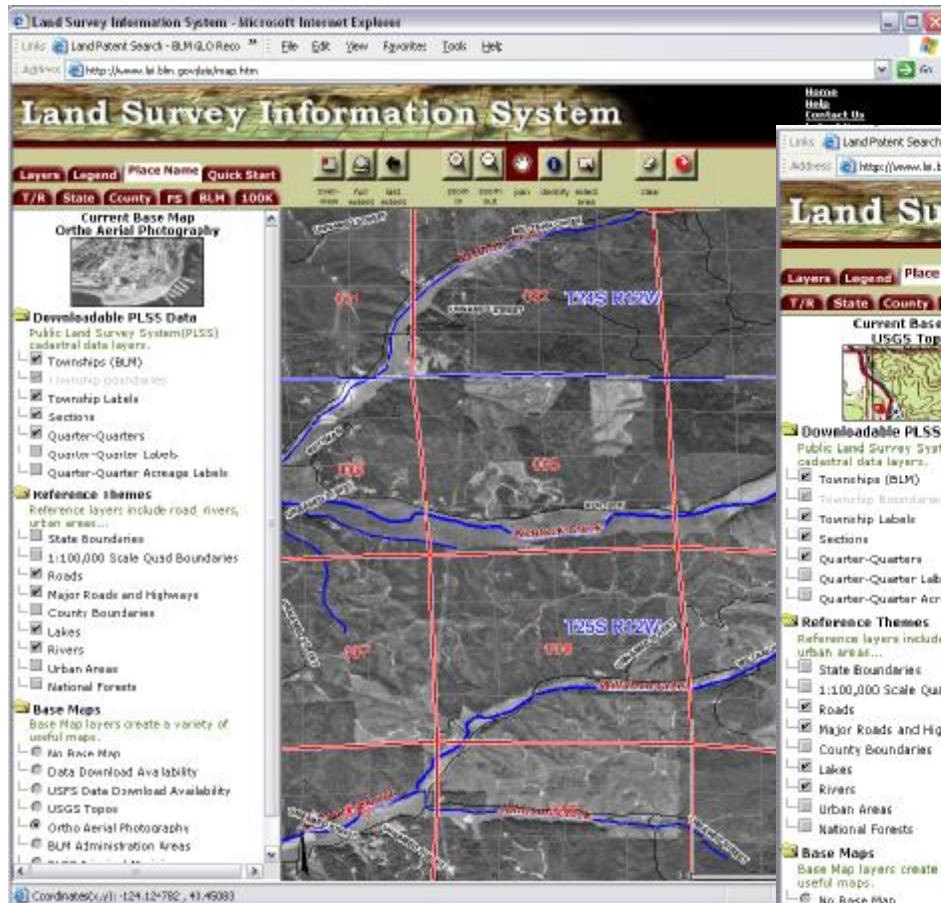


Data is delivered 3 ways...



1

- Viewable from the web interface



2

- Downloadable as Shapefiles

Selected Townships
Custom Selection

To download data, select the desired Provider and Format, and press button.

BLM (GIS Shapefile format)
 BLM (GCDB Flat File format [Info...](#))
 USFS and other Sources (GIS Shapefile format)

Download Now

Total Records: 2		Data Availab Status	
Township	Updated	BLM	USFS And Sour
1 OR 33 T024S R012W	28 Oct 2002	Yes	-
2 OR 33 T025S R012W	28 Oct 2002	Yes	-

Close

FME Download - Microsoft Internet Explorer

SpatialDirect
WEB-BASED DATA DELIVERY

Dynamically download all Townships currently displayed on the map. A variety of Data formats and projections are supported by this feature.

NOTE: To download large extents like an entire state, you can use the Query tools(ie. State Query) to download pre-packaged zip files. These pre-packaged files are limited to Shapefile format, using Geographic NAD27 coordinate system.

Download Format:
ESRI Shape
AutoCAD DWG (R14)
AutoCAD DWG (R2000)
AutoCAD DXF (R12)
AutoCAD DXF (R14)
AutoCAD DXF (R2000)
Caris NTX
EPS (Encapsulated PS)
IEPS (Illustrator EPS)
ESRI Arc/Info Coverage
ESRI Arc/Info Export (E00)
ESRI Arc/Info Generate
ESRI GML
ESRI Shape
FME Feature Store File
Geographix CDF
GML 2 (Safe Schema)
Landmark 7.MAD

Coordinates:
Lat/Long NAD83

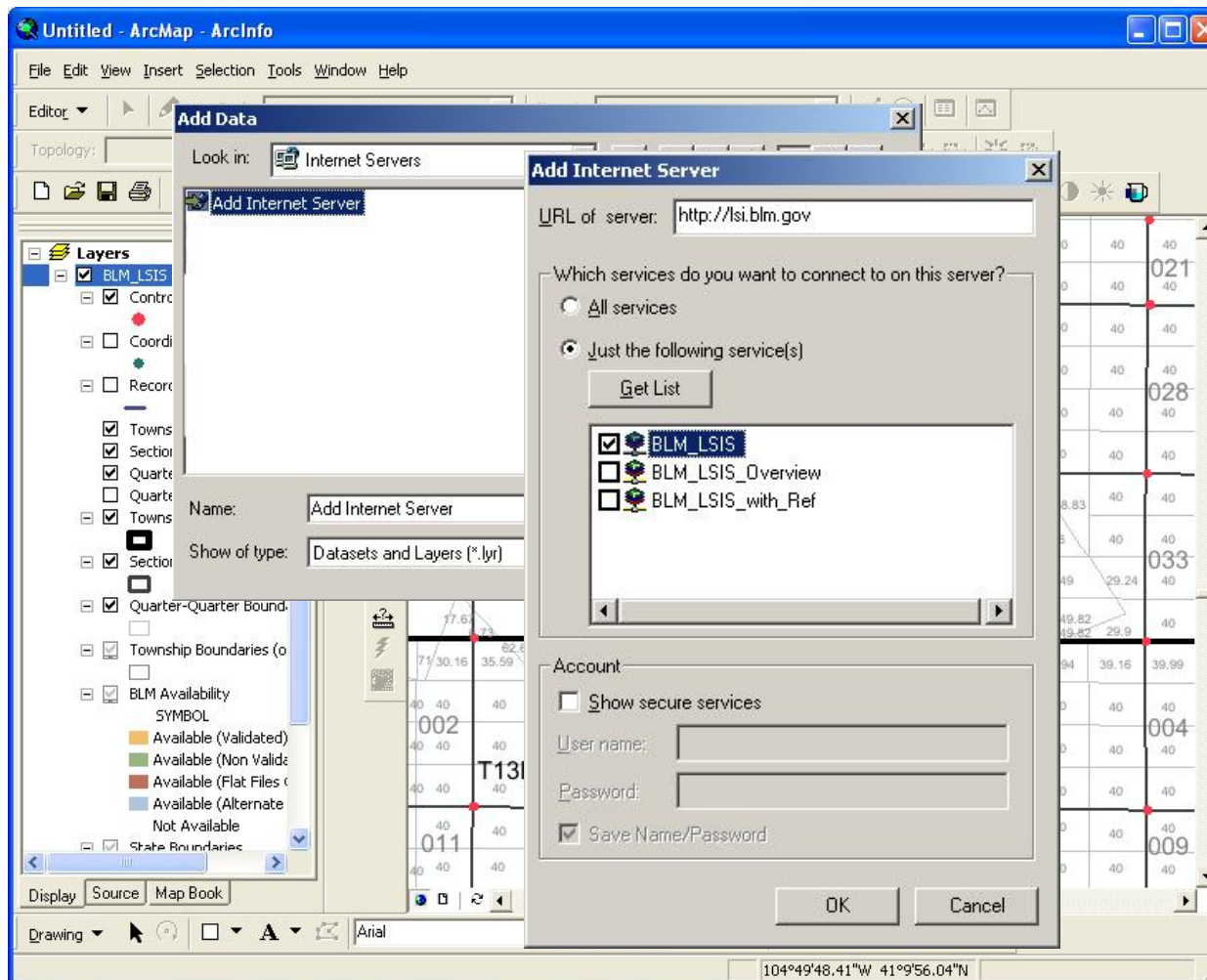
Layers:
Townships
Sections
Aliquots

Translate Data

...d requests. A notification e-mail will be sent to

3

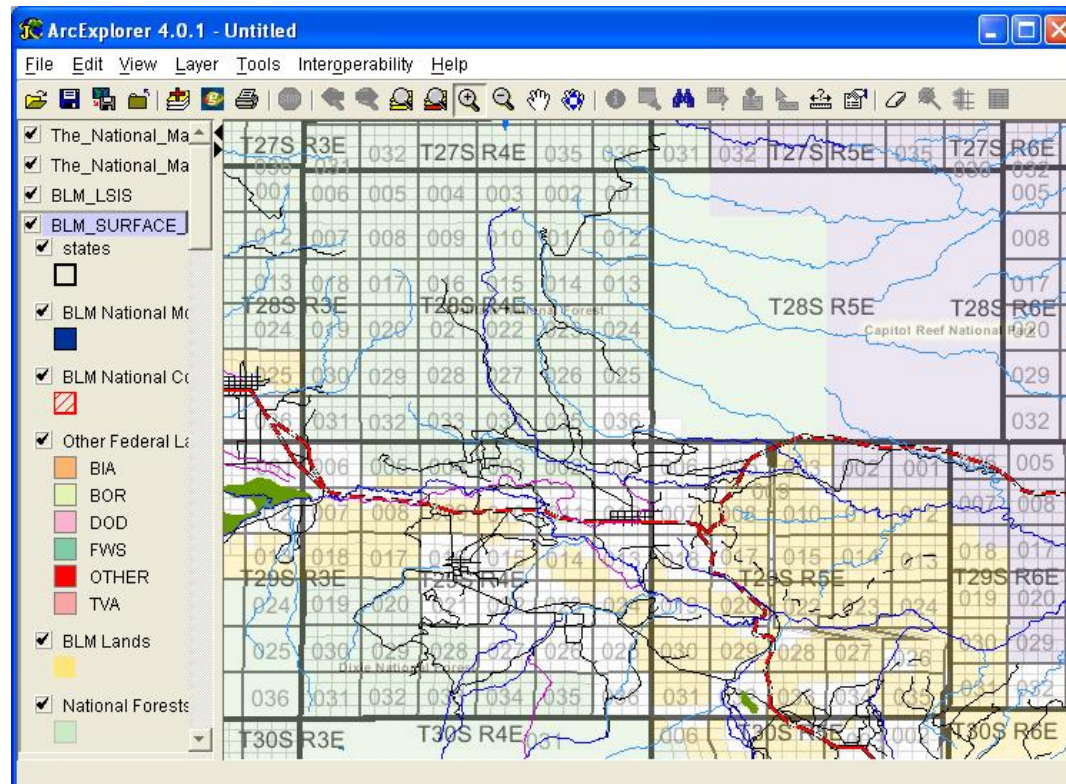
- Accessible as a streaming ArcIMS layer



Integrate with other data layers through Desktop or Mobile GIS

- Add data from the internet with the URL:

<http://lsi.blm.gov>



Future Streaming Services...

- BLM National Conservation Areas
 - National Wild and Scenic Rivers
 - National Scenic Trails
 - National Historic Trails
- BLM Wilderness Areas
- BLM Wilderness Study Areas
- BLM Areas of Environmental Concern

Land Survey Information System

[Home](#)
[Help](#)
[Contact Us](#)
[Latest News](#)

Layers Legend Place Name **Quick Start**

T/R State County FS BLM 100K

over-view full extent last extent zoom in zoom out pan identify select area clear

Quick Start

For detailed instructions, view [Help](#).
Get information on site updates at our [What's New Page](#).

Browsing

1. Zoom in to view Townships by using the navigation buttons



2. Use Layer TreeView to toggle various base maps.

Base Maps

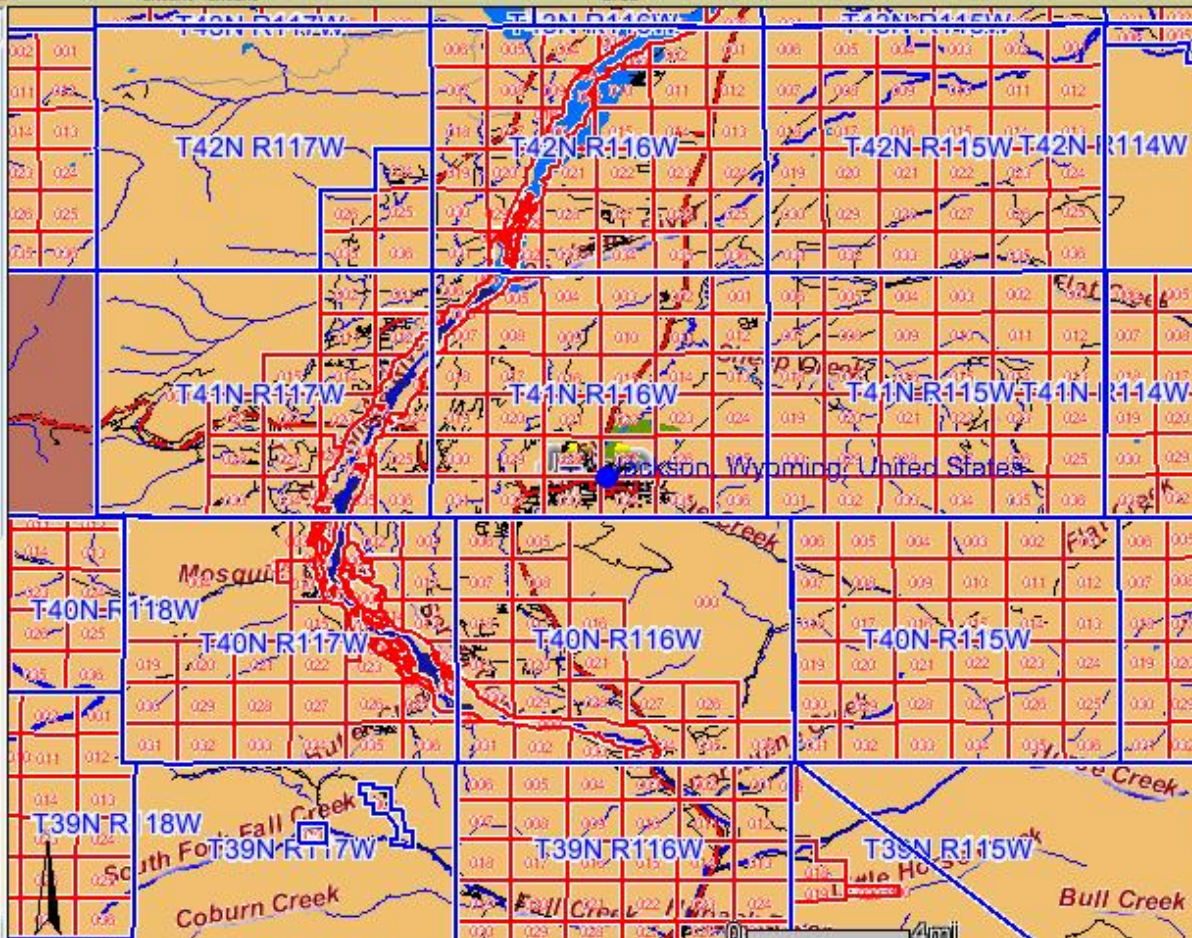
Base Map layers create a variety of useful maps.

- No Base Map
- Data Download Available
- USFS Data Download Available
- USGS Topos

3. Use Navigation tools to refine map display: Zoom Back, Full Extent, Pan...

Selecting Townships

- 1a. Use one of the Query Tools to Select and Zoom to desired



DISCLAIMER

YOU ARE VISITOR: 46,501

PRIVACY



QUESTIONS



For additional Information

www.blm.gov/nils

www.geocommunicator.gov

www.geocommunicator.gov/lsi

Streaming Service:

Map Service: <http://www.lsi.blm.gov>

Map Service: BLM_L SIS