



Scan 2 BIM

The best way to start a renovation project

The way we work

Leica P20 / P40 scanner

Nctech Istar



deBONT geo-3d

iSTAR

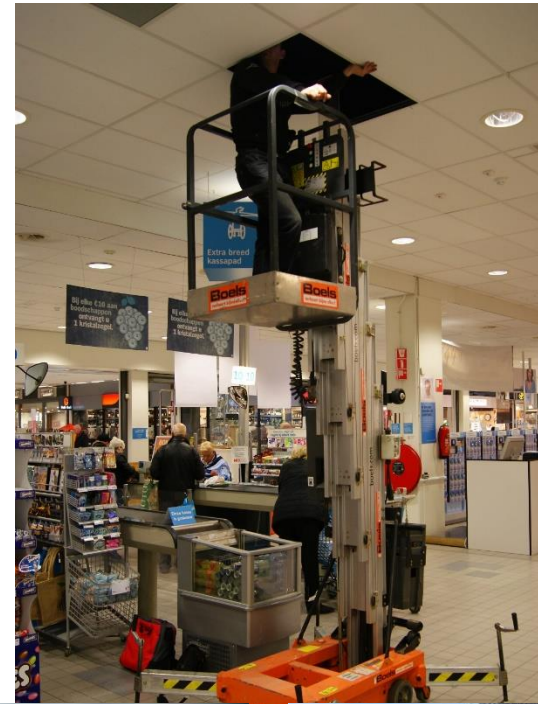
360 Degree Rapid Imaging

The way we work

Make a plan!

What you see is what You get!

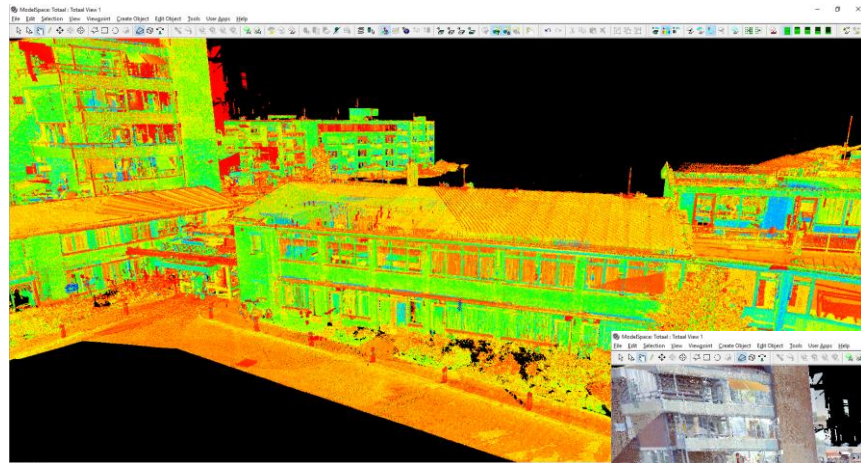
Make sure your data is correct!



The way we work



Leica Cyclone → PTG / XYZ

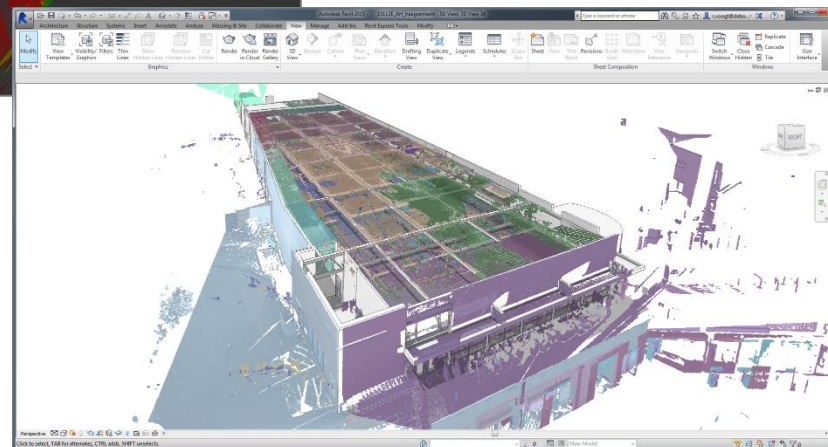
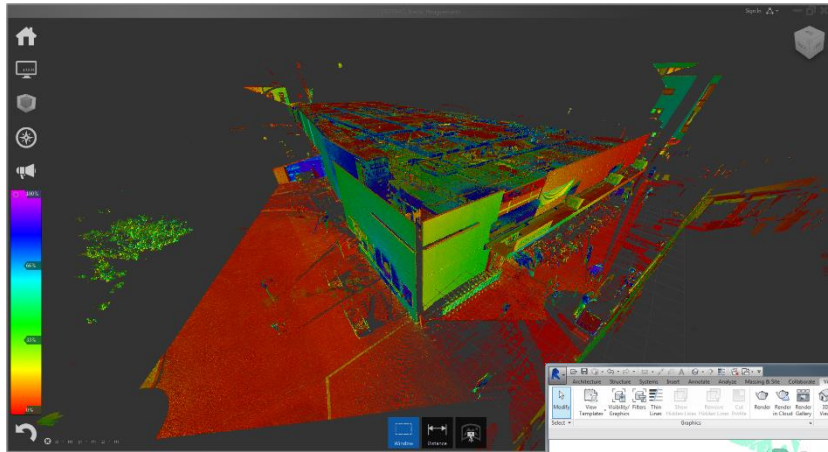


Registration Total

Constraint ID	ScanWorld1	ScanWorld2	Type	Status	Weight	Error	Error Vector	Group Error	Group Error Vector	Group
1001	1000 SW-001	1002 SW-003	Correspondence Vertices	On	1.0000	0.001 m	(0.000, 0.000, 0.000) m	n/a	n/a	Ungruppé
1002	1000 SW-001	1001 SW-002	Correspondence Vertices	On	1.0000	0.001 m	(0.000, 0.000, 0.000) m	n/a	n/a	Ungruppé
1003	1001 SW-002	1002 SW-003	Correspondence Vertices	On	1.0000	0.001 m	(0.000, 0.000, 0.000) m	n/a	n/a	Ungruppé
1004	1001 SW-002	1003 SW-004	Correspondence Vertices	On	1.0000	0.001 m	(0.000, 0.000, 0.000) m	n/a	n/a	Ungruppé
1005	1001 SW-002	1004 SW-006	Correspondence Vertices	On	1.0000	0.001 m	(0.000, 0.000, 0.000) m	n/a	n/a	Ungruppé
1006	1001 SW-002	1002 SW-003	Correspondence Vertices	On	1.0000	0.002 m	(0.000, 0.000, 0.000) m	n/a	n/a	Ungruppé
1007	1002 SW-003	1022 SW-026	Correspondence Vertices	On	1.0000	0.001 m	(0.001, 0.001, 0.000) m	n/a	n/a	Ungruppé
1008	1002 SW-003	1022 SW-026	Correspondence Vertices	On	1.0000	0.002 m	(0.000, 0.000, 0.000) m	n/a	n/a	Ungruppé
1009	1002 SW-003	1003 SW-004	Correspondence Vertices	On	1.0000	0.001 m	(0.000, 0.000, 0.000) m	n/a	n/a	Ungruppé
1010	1002 SW-003	1004 SW-006	Correspondence Vertices	On	1.0000	0.001 m	(0.000, 0.000, 0.000) m	n/a	n/a	Ungruppé
1011	1002 SW-003	1002 SW-003	Correspondence Vertices	On	1.0000	0.001 m	(0.000, 0.000, 0.000) m	n/a	n/a	Ungruppé
1012	1002 SW-003	1002 SW-004	Correspondence Vertices	On	1.0000	0.001 m	(0.000, 0.000, 0.000) m	n/a	n/a	Ungruppé
1013	1002 SW-003	1002 SW-005	Correspondence Vertices	On	1.0000	0.001 m	(0.000, 0.000, 0.000) m	n/a	n/a	Ungruppé
1014	1002 SW-003	1003 SW-004	Correspondence Vertices	On	1.0000	0.001 m	(0.000, 0.000, 0.000) m	n/a	n/a	Ungruppé
1015	1002 SW-003	1003 SW-004	Correspondence Vertices	On	1.0000	0.001 m	(0.000, 0.000, 0.000) m	n/a	n/a	Ungruppé
1016	1002 SW-003	1004 SW-006	Correspondence Vertices	On	1.0000	0.001 m	(0.000, 0.000, 0.000) m	n/a	n/a	Ungruppé
1017	1002 SW-003	1004 SW-006	Correspondence Vertices	On	1.0000	0.001 m	(0.000, 0.000, 0.000) m	n/a	n/a	Ungruppé
1018	1002 SW-003	1004 SW-006	Correspondence Vertices	On	1.0000	0.001 m	(0.000, 0.000, 0.000) m	n/a	n/a	Ungruppé
1019	1002 SW-003	1005 SW-007	Correspondence Vertices	On	1.0000	0.001 m	(0.000, 0.000, 0.000) m	n/a	n/a	Ungruppé
1020	1002 SW-003	1006 SW-008	Correspondence Vertices	On	1.0000	0.001 m	(0.000, 0.000, 0.000) m	n/a	n/a	Ungruppé
1021	1002 SW-003	1007 SW-009	Correspondence Vertices	On	1.0000	0.001 m	(0.000, 0.000, 0.000) m	n/a	n/a	Ungruppé
1022	1002 SW-003	1008 SW-010	Correspondence Vertices	On	1.0000	0.001 m	(0.000, 0.000, 0.000) m	n/a	n/a	Ungruppé
1023	1002 SW-003	1007 SW-009	Correspondence Vertices	On	1.0000	0.002 m	(0.000, 0.000, 0.000) m	n/a	n/a	Ungruppé
1024	1002 SW-003	1008 SW-010	Correspondence Vertices	On	1.0000	0.002 m	(0.000, 0.000, 0.000) m	n/a	n/a	Ungruppé
1025	1002 SW-003	1009 SW-011	Correspondence Vertices	On	1.0000	0.001 m	(0.000, 0.000, 0.000) m	n/a	n/a	Ungruppé
1026	1002 SW-003	1009 SW-011	Correspondence Vertices	On	1.0000	0.001 m	(0.000, 0.000, 0.000) m	n/a	n/a	Ungruppé
1027	1002 SW-003	1010 SW-012	Correspondence Vertices	On	1.0000	0.001 m	(0.000, 0.000, 0.000) m	n/a	n/a	Ungruppé
1028	1002 SW-003	1009 SW-011	Correspondence Vertices	On	1.0000	0.001 m	(0.000, 0.000, 0.000) m	n/a	n/a	Ungruppé
1029	1002 SW-003	1010 SW-012	Correspondence Vertices	On	1.0000	0.001 m	(0.000, 0.000, 0.000) m	n/a	n/a	Ungruppé
1030	1002 SW-003	1010 SW-012	Correspondence Vertices	On	1.0000	0.001 m	(0.000, 0.000, 0.000) m	n/a	n/a	Ungruppé

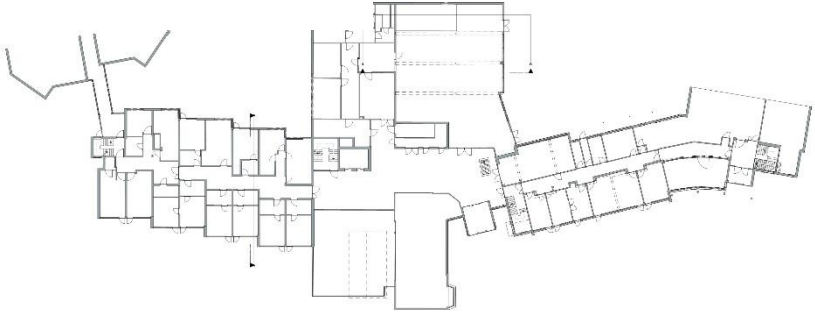
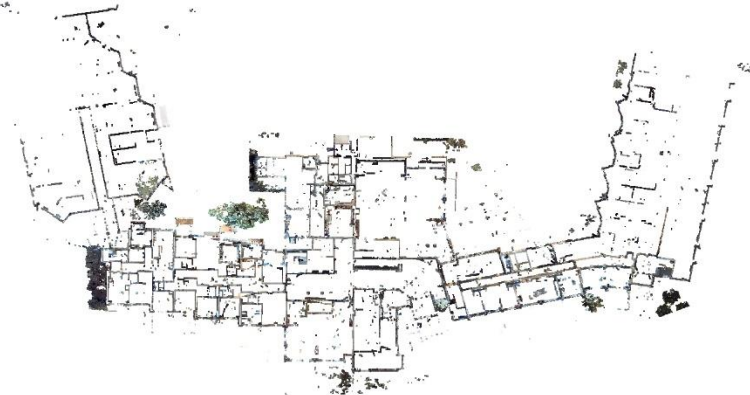
The way we work

Autodesk Recap360 / Revit

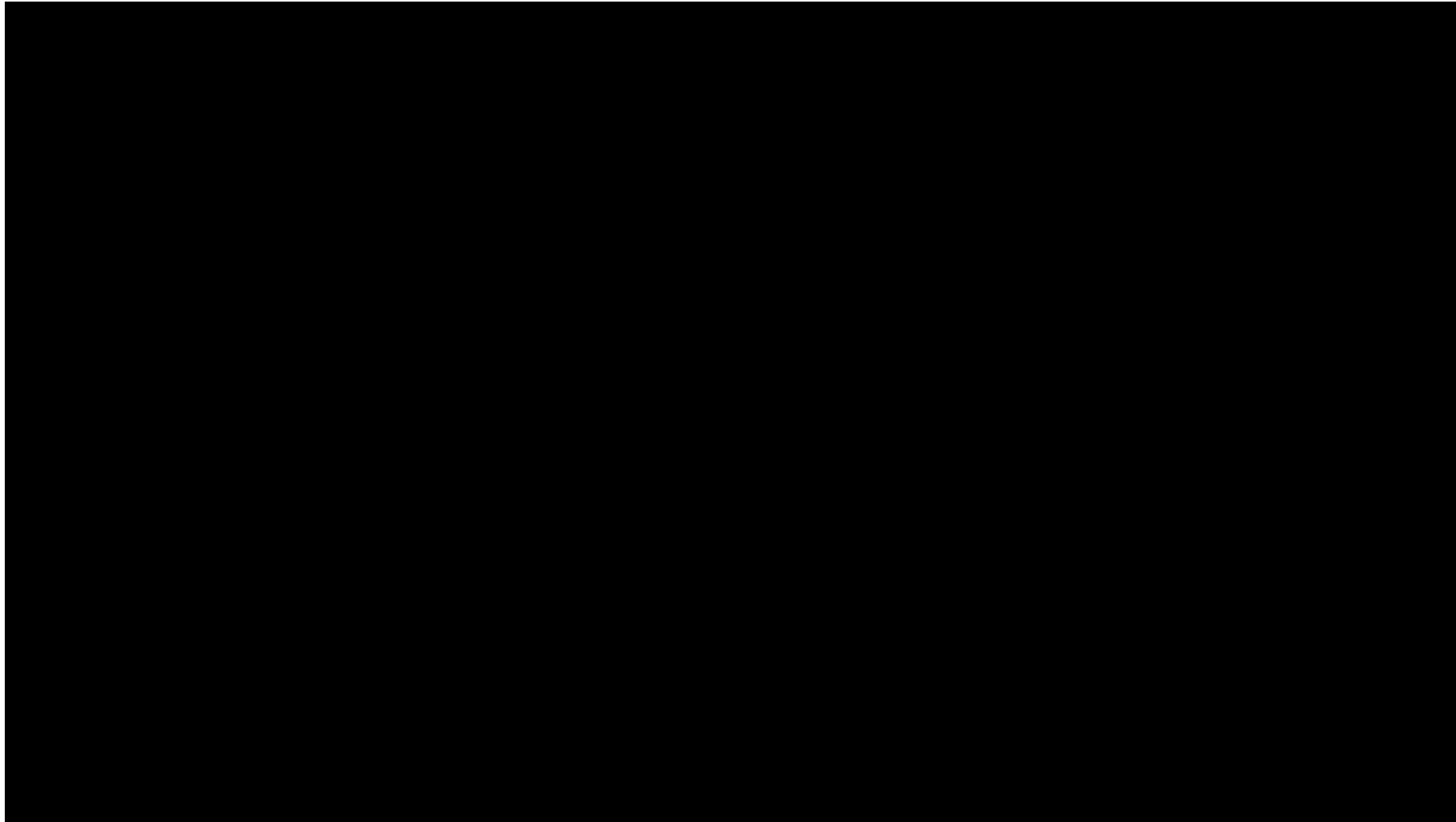


The way we work

Graphisoft Archicad



The result



The result

