

**Prof. Bas Kok**  
**Delft University of Technology**

**'Partnership building is a crucial element of the Dutch NGII'**

From Pharaohs to Geoinformatics  
 FIG Working Week 2005 and GSDI-8  
 Cairo, Egypt April 16-21, 2005



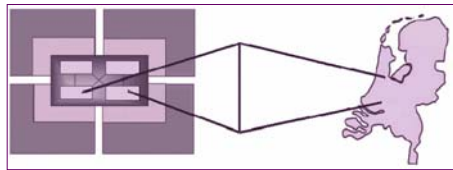
**Maturity of SDI from an organisational perspective: Dutch NGII**

Aspect	Stage	Stand alone	Exchange	Intermediary	Network
<b>Vision</b>		Focus on individual organisation	Developed with all stakeholders	Implementation	Commonly shared, and frequently reviewed
<b>Leadership</b>		Focus on individual organisation	Questioned	Accepted	Respected by all stakeholders
<b>Communication</b>		Focus on individual organisation	Open between public parties	Open between all stakeholders	Open and interactive between all
<b>Self-organizing ability</b>		Passive problem recognition	Neutral problem recognition	Actively helping to solve identified problems	Actively working on innovation

Bastiaan van Loenen / Bas Kok



**Infrastructure framework (1992)**



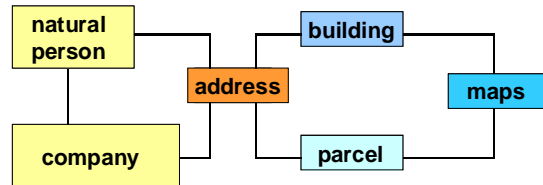
**Administrative**  
 - population  
 - cadastre  
 - enterprise  
 - buildings

**Link**  
 address

**Geometric**  
 - 1:10.000  
 - 1:1000/2000  
 topographic set



**Authentic registrations**

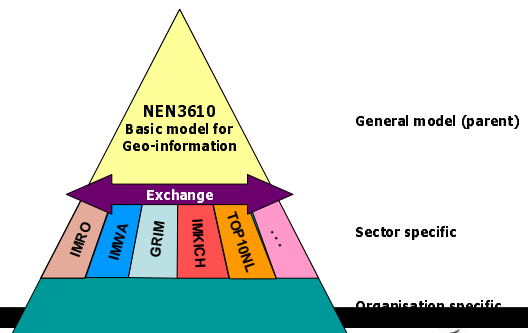


**Authentic registrations**

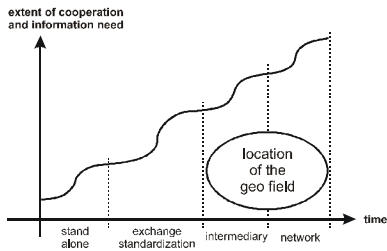
- One place of the information
- One authority is responsible
- Every has to use this information
- First registrations of geo-information formalized by law



**The Dutch standardisation approach: semantics**



## conceptual view on development of NGII



## Maturity of SDI from an organisational perspective: Dutch NGII

Aspect	Stage	Stand alone	Exchange	Intermediary	Network
Vision		Focus on individual organisation	Developed with all stakeholders	Implementation	Commonly shared, and frequently reviewed
Leadership		Focus on individual organisation	Questioned	Accepted	Respected by all stakeholders
Communication		Focus on individual organisation	Open between public parties	Open between all stakeholders	Open and interactive between all
Self-organizing ability		Passive problem recognition	Neutral problem recognition	Actively helping to solve identified problems	Actively working on innovation

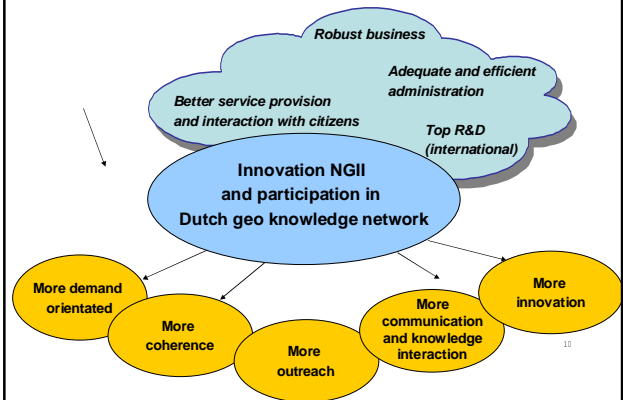
Bastiaan van Loenen / Bas Kok

## Current partnership building for the sound Dutch NGII

### Case 1:

"Space for Geo Information Program" for innovation of the NGII € 20 million government grant available

### Strategic framework Space for Geo Information



Source: Space for Geo Information Foundation

## "Space for Geo Information Program" for innovation of the NGII

### Program is successful:

- Consortium partners have generated € 13 million and € 7 million was needed
- Quality of the consortia is very good: 30% is private sector money
- Ideal mix of consortium partnership building

## "Space for Geo Information Program" for innovation of the NGII

### In future more focus on:

- Emphasis international participation
- Societal issues and interaction with citizens
- Strategy building on communication of "knowledge results" and results scientific community

### Examples of current partnership building for the sound Dutch NGII

**Case 2:** Partnership Digital Spatial Plans in the entire Dutch administration: DURP

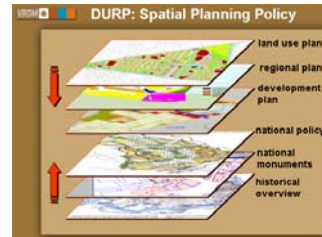
Initiative of the Department of Housing Building Spatial Planning and Environment in cooperation with the Dutch public geo partners.

- Department of Interior
- Municipalities
- Provinces
- Waterboards
- Ravi

13

### Case 2: Partnership Digital Spatial Plans in the entire Dutch administration: DURP

Digital Spatial Planning Policy



14

### Case 2: Partnership Digital Spatial Plans in the entire Dutch administration: DURP

**Steps:**

- from maps to digital plans
- new legal planning process
- developing standards (Ravi)
- portal building ( Ravi )
- extension NGII new digitized spatial plans on national, regional and local level

15

### Case 2: Partnership Digital Spatial Plans in the entire Dutch administration: DURP

**Problems:**

- Lack of funding
- Problems in linking spatial plans with NGII / Authentic Registration vision

16

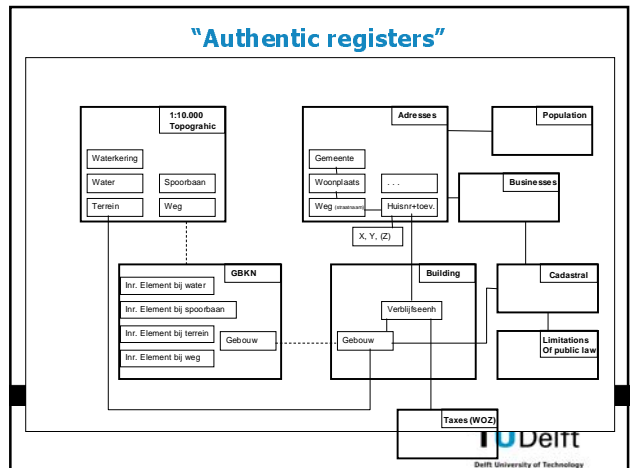
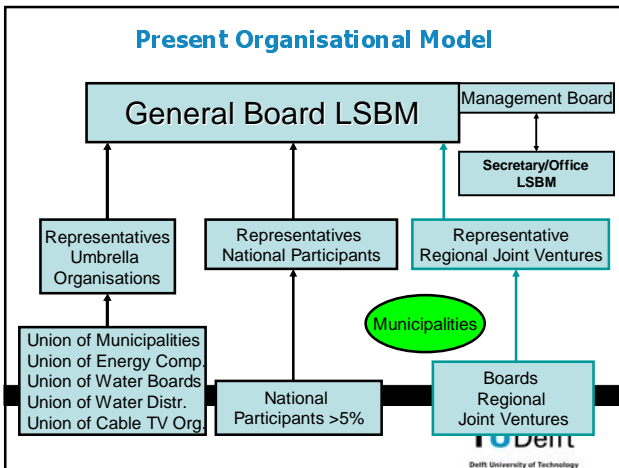
### Case 3: Large Scale Basic Map (GBKN)

- Public private partnership
- GBKN negotiates being qualified as authentic registration

17



Base Map Emmeloord



### Case 3: Large Scale Basic Map (GBKN)

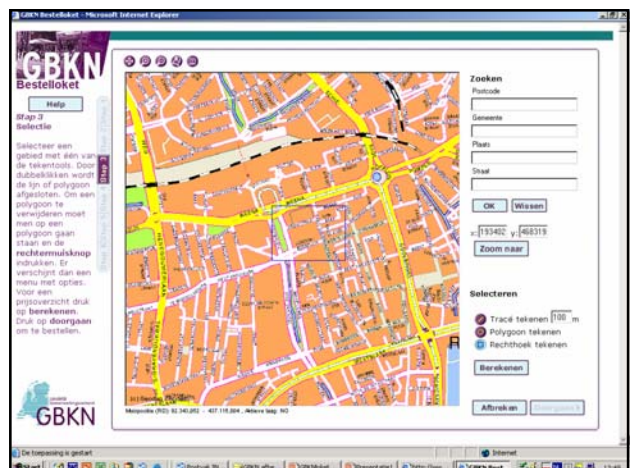
**Keyquestion: Who pays authentic registration ambition?**

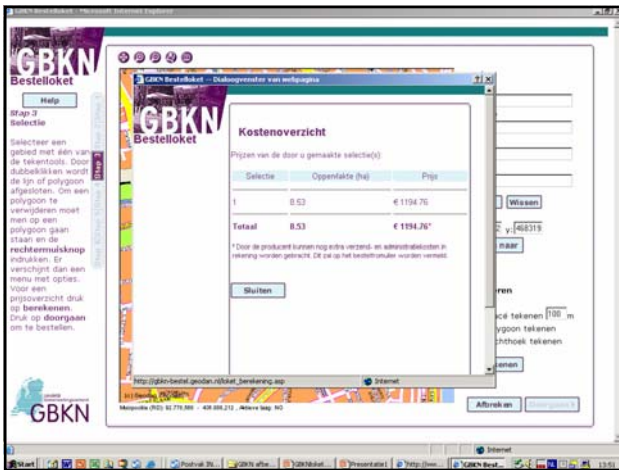
- Financial issues**  
 Investment production costs: € 200 million  
 Exploitation costs: € 21 million
- Private Companies investing 40%**

21

### Webservices

- Ordering small parts
- Viewing
- MMS: update signals





### Case 3: Large Scale Basic Map (GBKN)

#### Scenario's:

1. Current public private partnership extended by government participation
2. Steering role by the department of Housing and Building

Decision by the Secretary of Housing and Building expected at the end of 2005

### Conclusions

Organisational issues and partnerships crucial development SDI's

- Case 1: Space for Geo Information program partnerships conditions for
  - Demand driven approach
  - More focus on international issues
  - Sound Scientific results

**Active role all GI players innovation process NGII**

### Conclusions

Organisational issues and partnerships crucial development SDI's

- Case 2: Digital Spatial Planning Partnership
  - Modernisation legal/organisational Spatial Planning process
  - Digitalisation spatial plans
  - Participation geo-community and NGII

**Execution in close cooperation with the Dutch GI-sector**

### Conclusions

Organisational issues and partnerships crucial development SDI's

- Case 3: Negotiations partnership GBKN/government

**Open communication process GBKN and government for authentic qualification**

### Conclusions

Sound SDI means:

**GI community real player in public domain!**