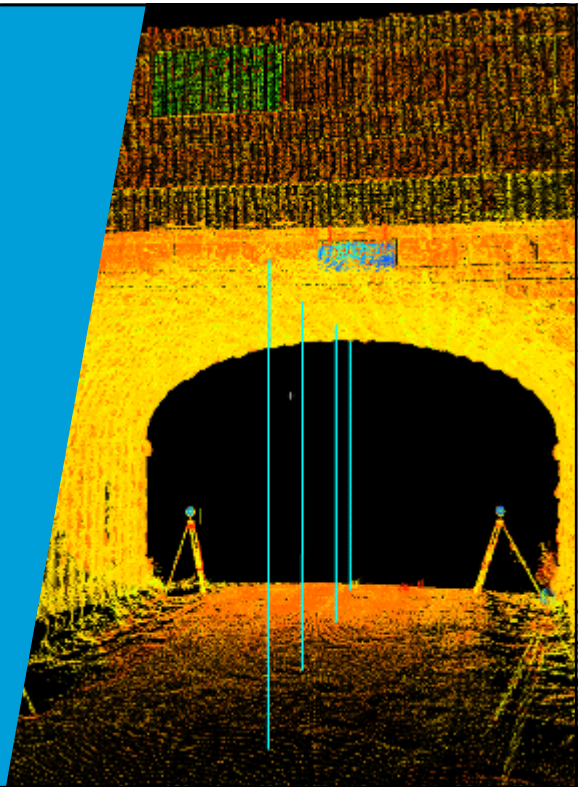


The benchmark for survey and spatial solutions

3D Laser Scanning for Masonry Arch Bridges


Thomas Werner
David Morris



The benchmark for survey and spatial solutions



3

Overview 

Introduction

Clientele

Team

Support


Discussion

The benchmark for survey and spatial solutions

4

INTRODUCTION

“Technological Push” versus “Applications Pull”

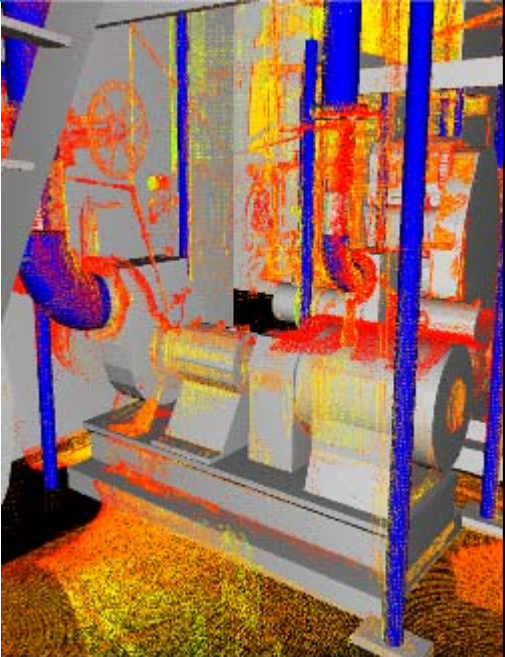


VEKTA
5

Introduction

Technological Push - TLS

- Developed for Petroleum and Mining Industries
 - Volume
 - Pipe Run
 - Rapid Acquisition



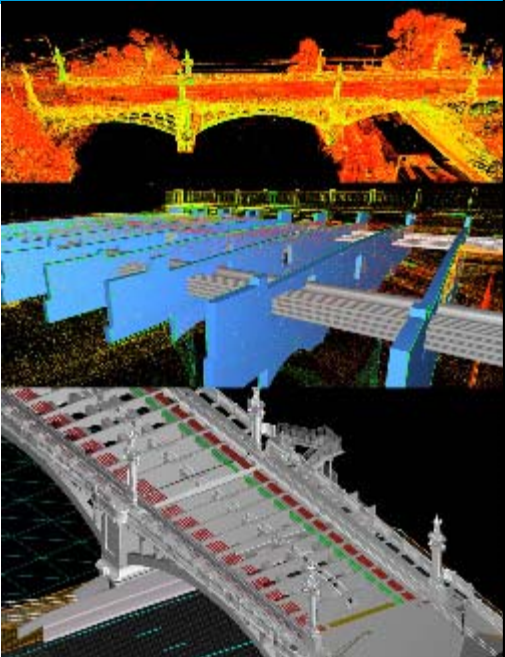
The benchmark for survey and spatial solutions

VEKTA
6

Introduction

Applications Pull

- Several Applications – purely as a result of initiative
 - Civil
 - Structural
 - Architectural
 - Defense
- **Bridges**




The benchmark for survey and spatial solutions

7


CLIENTELE

“Progressive clients are paramount for successful projects”



8

Clientele




Architects, Engineers and Government

- General Knowledge of Surveying
- Limited Exposure to Laser Scanning
 - Outputs and usability
 - Acquisition Benefits
 - Transition from 2D and Plan Deliverables to 3D
 - Emerging Technology
- Cost vs. Initial Benefit

The Client is taking a Risk each time this new survey “application” is applied

The benchmark for survey and spatial solutions





10



TEAM

“Effective team management promotes project stability, structure and performance”

VEKTA

Team VEKTA

Collaboration between GHD Bridges (Vic) and Vekta
Works completed for Department of Transport
Overseen by Heritage Victoria



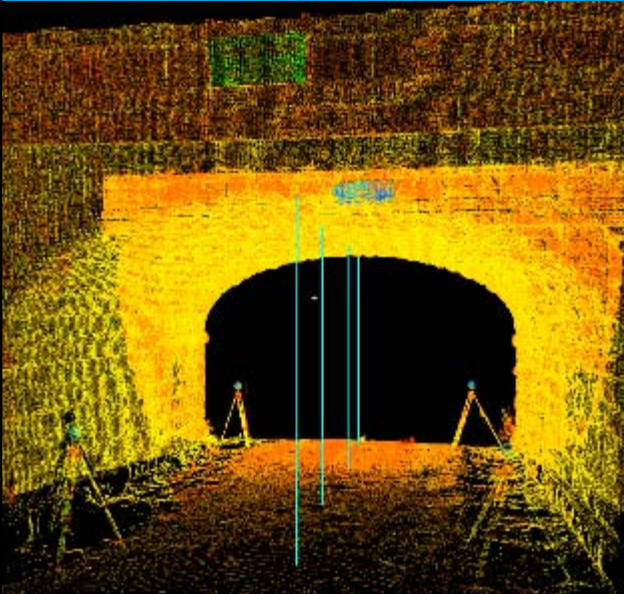
The benchmark for survey and spatial solutions

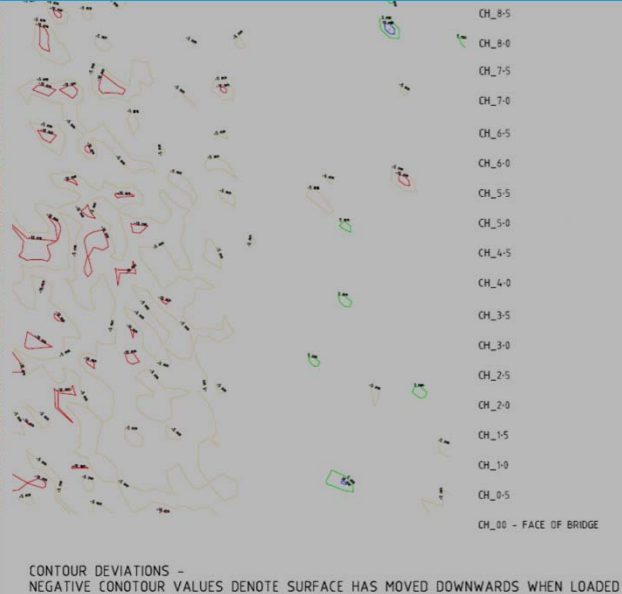
Acquisition VEKTA



The benchmark for survey and spatial solutions >Pre-Loaded and Post Loaded

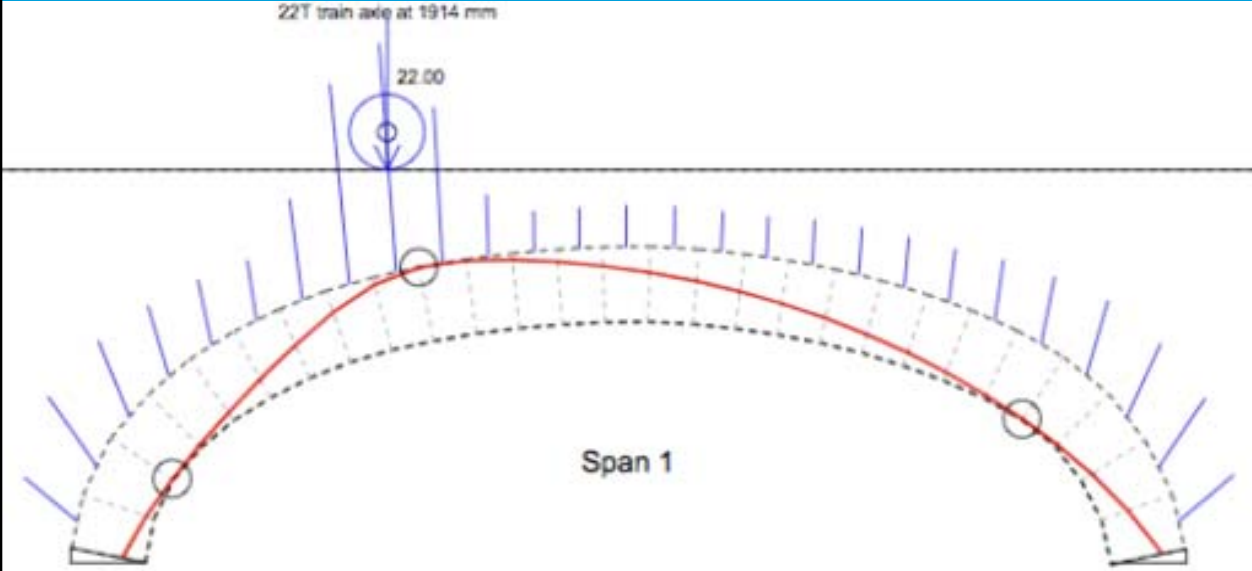
VEKTA
Providing Results
13





The benchmark for survey and spatial solutions
> Deviation measurement of the two surfaces – Contour Iso-pach plans

VEKTA
Engineering Analysis
14



22T train axle at 1914 mm

22.00

The benchmark for survey and spatial solutions
> Thrust Line for this bridge – Elliptical (weak) system

Propping the Bridge for Safe (Temporary) Use **VEKTA**



The benchmark for survey and spatial solutions

>False-Work and Grout Bags – to meet zero-impact requirements

Permanent Reinforcement **VEKTA**

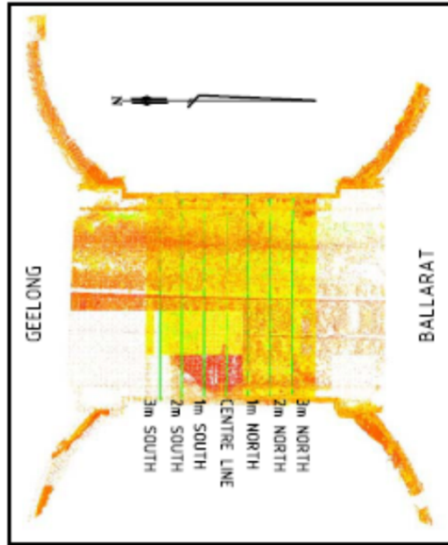
As close to the existing surface as possible
 Provided location of Surface at chainages
 Point Cloud Sub-Sets

Cost Effective Solution



The benchmark for survey and spatial solutions

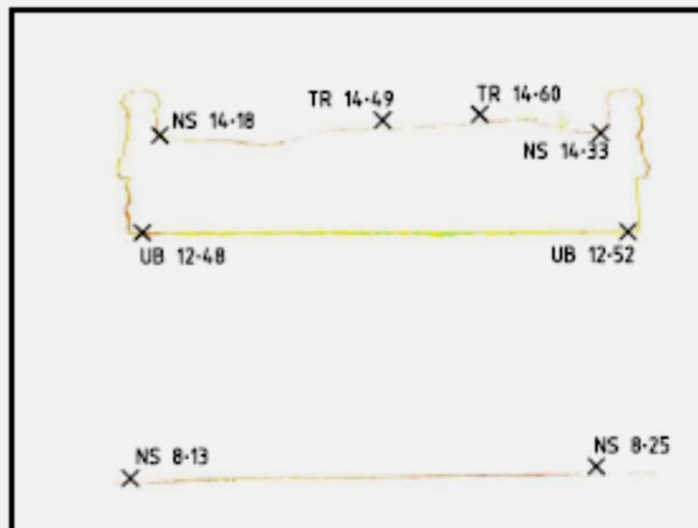
Data Conversion and Analysis **VEKTA**



PLAN VIEW OF SECTION

The benchmark for survey and spatial solutions

Data Conversion and Analysis **VEKTA**



VIEW NORTH - 2M SOUTH OF CENTER LINE

The benchmark for survey and spatial solutions

>Section slice in AutoCAD – for use by Engineering CAD Operators



SUPPORT

“Service Providers aim to keep us at the leading edge of the market”



Support



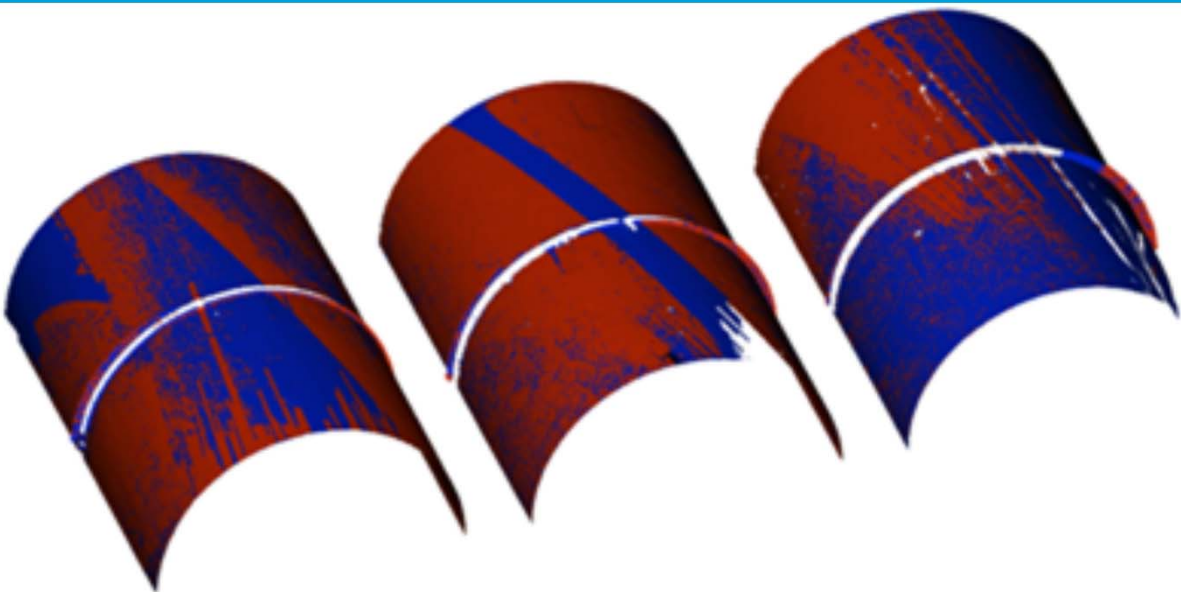
| | |
|--|----------|
| Developers and Designers/ Equipment Sales and Service | – Tier 1 |
| Service Provider | – Tier 2 |
| Client and Consultants | – Tier 3 |

CLIENTS & CONSULTANTS

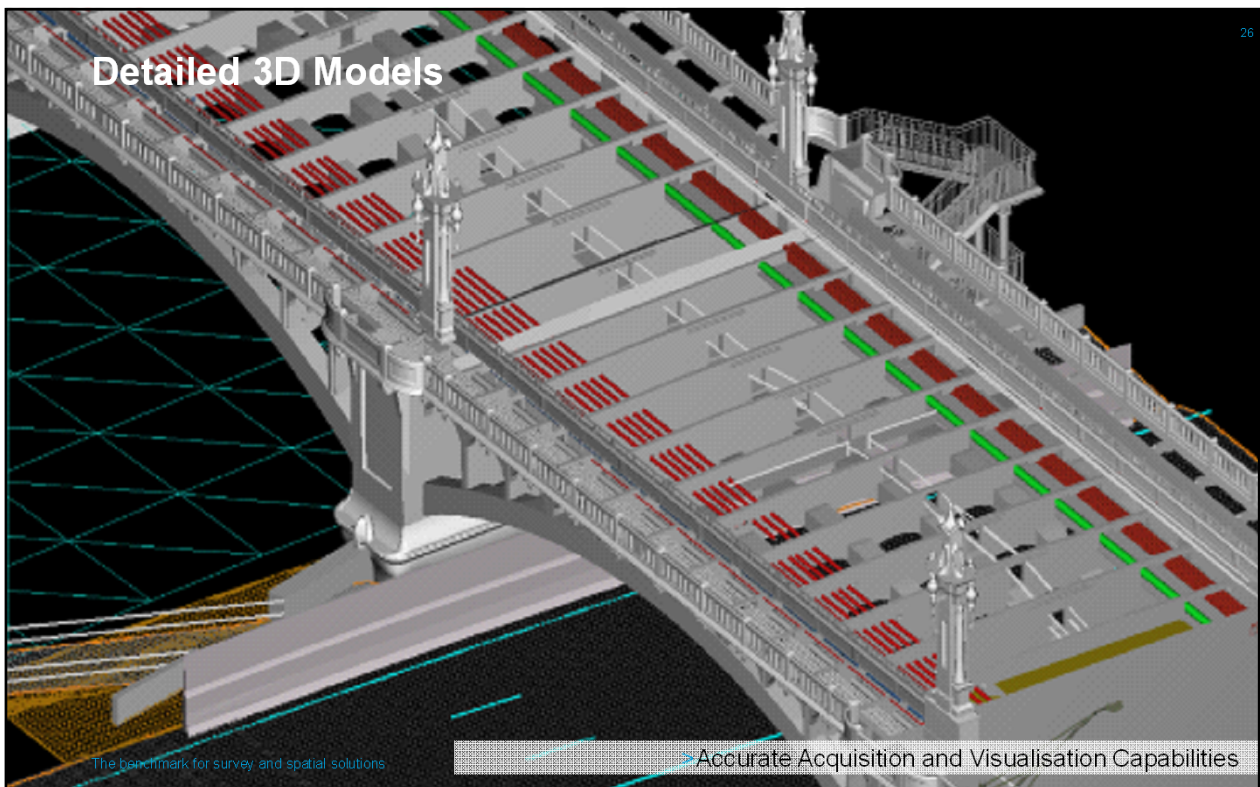
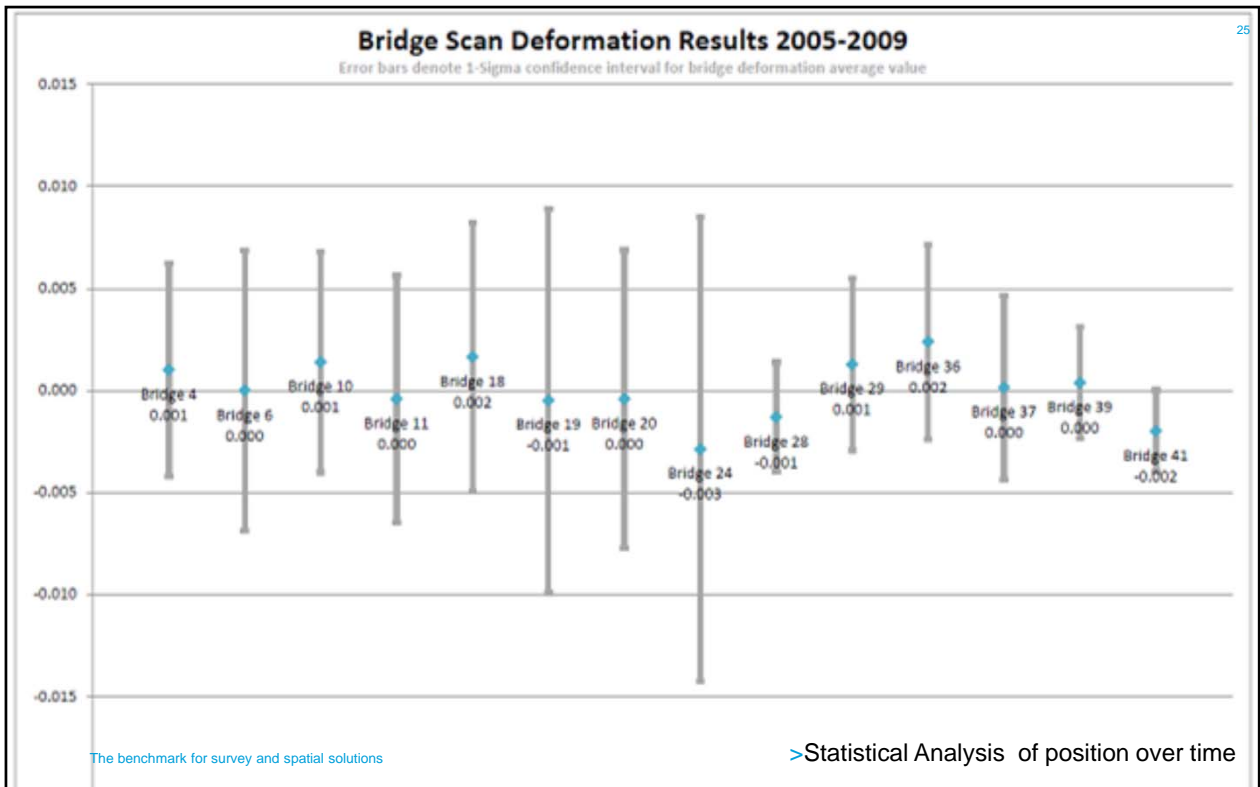
Tier 3



Detailed Analysis



>Temporal Modelling and Analysis



Capabilities and Support VEKTA

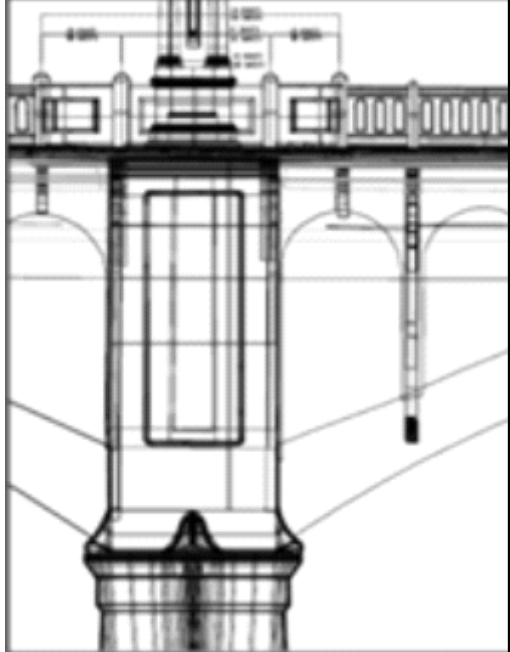
150%-500% Conventional Surveying Cost

Benefits

Timeframe

Usable Data

CAD Plans



The benchmark for survey and spatial solutions

28

SERVICE PROVIDERS

Tier 2



Service Providers

VEKTA

29

- Competent
- Knowledgeable
- Modelling Toolbox
- Efficient and cost-sensitive

Support Client and Consultants



The benchmark for survey and spatial solutions

30

**DEVELOPERS AND DESIGNERS/
EQUIPMENT SALES AND SERVICE**

Tier 1



Client Delivery
VEKTA
31

- Cyclone
 - AutoCAD
 - MicroStation
 - Revit
 - NavisWorks
 - PDMS
 - 12D
 - Rhinoceros
 - Sofistik
 - CivilCAD

Relational Object-Based
(Cyclone/Rhinoceros)

Non-Relational Object-Based
(AutoCAD)

Relational Object-Based
(Revit, PDMS,
NavisWorks, Sofistik)

The benchmark for survey and spatial solutions

The benchmark for survey and spatial solutions

Thank You