



FIG Working Week 2012

Rome, Italy 6–10 May

Knowing to:

Manage the territory
Protect the environment
Evaluate the cultural heritage



INSPIRE in Denmark and its impact on the Danish eGovernment

Lars Erik Storgaard
Danish National Survey and Cadastre
Email: laers@kms.dk
Web site: www.kms.dk and www.inspire-danmark.dk

Platinum sponsors:



FIG Working Week 2012

Rome, Italy 6–10 May

Knowing to:

Manage the territory
Protect the environment
Evaluate the cultural heritage



Agenda

1. A short presentation (of the National Survey and Cadastre)
2. About the NSDI – status and strategy
3. What role does INSPIRE play?
4. Danish eGovernment strategy and where we are heading

Platinum sponsors:



A short presentation (of the National Survey and Cadastre)

- National Survey and Cadastre = KMS
- As coordinator: The Minister of the Environment has assigned most of her (INSPIRE) authority to KMS
- Represent Denmark in the INSPIRE Committee
- National contact Point
- Responsible for the Infrastructure for Spatial Information Act and thereby implementation of the INSPIRE directive
- Manage infrastructure for spatial information in Denmark
- Hence KMS has a legal obligation to ensure a cohesive cross agency SDI that supports public administration and public sector activities.

Platinum sponsors:



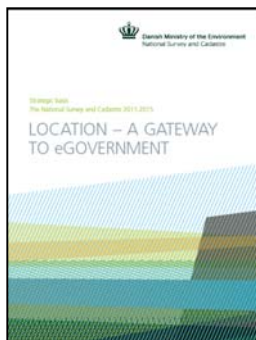
esri



Trimble



About the NSDI – status and strategy



Overall objective:

- Spatial information becomes an everyday resource.
- Clear agreement on central principles (INSPIRE).
- Work to ensure that spatial information contributes to improving the efficiency of public sector activities.

Focal points:

- Stronger coordination and governance.
- Common components and shared data
- Agreements in the public sector.

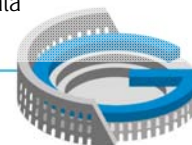
Platinum sponsors:



esri



Trimble



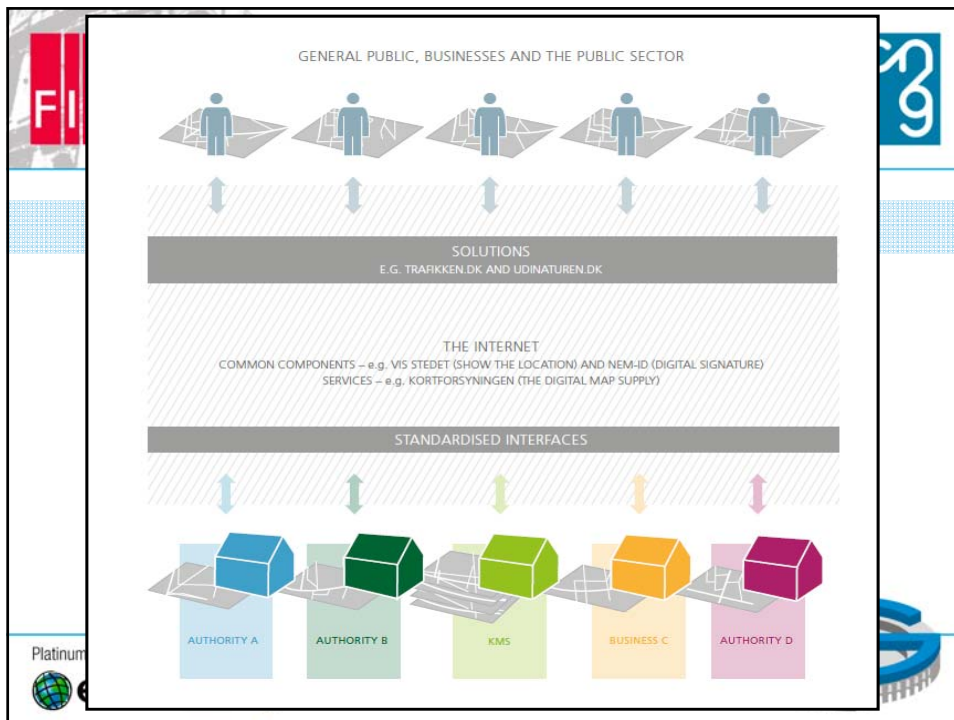


FIG Working Week 2012

Rome, Italy 6–10 May

Knowing to: Manage the territory, Protect the environment, Evaluate the cultural heritage

What role does INSPIRE play?

- Metadata – for data sets and services
- Harmonized and interoperable spatial data according to annex 1, 2 and 3
- Services
 - Discovery
 - View
 - Download
 - Transformation
 - In voke
- Monitoring and reporting's procedure
- Harmonized fundament for agreements
- Good standards and technical guidelines!

Applications and Geoportals

Service Bus (Internet)

GeoRM layers

Discovery Service, View Service, Download Service, Transf. Service, Other SDS

Invocable and Interoperable

Service Metadata, Data Set Metadata, Spatial Data Set, Gazetteer, Registry Service, Registers

Platinum sponsors: esri, Trimble

What role does INSPIRE play?

- **Legislation** (Infrastructure for Spatial Information Act)
 - Gives KMS overall responsibility for filling out the framework and objectives for the national SDI. This matters on the political agenda...
- **Increased awareness of SDI**
 - Is needed in order to effectively share data through standardized services.
 - Re-use, common components and shared access points.
 - Spatial information is on the political agenda.
- **Timeframe**
 - Consensus is strong but takes time...the Directive has put some speed into decision making.
- **THE INFRASTRUCTURE PRINCIPLES**
 - INSPIRE principles used as a guiding element in the development of a new Danish e-Government Strategy.

Platinum sponsors:



Danish eGovernment strategy and where we are heading

- Politically recognized that spatial data is essentially for an effective eGovernment.
- Financing is crucial: Digitization of process and communication is in focus.
- Re-using data and applications based on the INSPIRE-principles is in focus.
- The new strategy suggest that some spatial data set shall become core data!



Vision:

"Digitalization will create a smarter public sector that is simple, effective and coherent"

http://www.digst.dk/Home/Digitaliseringsstrategi/~/_media/Digitaliseringsstrategi/Tilqaengeligt_engelsk_strategi_ashx

Platinum sponsors:





FIG Working Week 2012

Rome, Italy 6–10 May

Knowing to: Manage the territory
Protect the environment
Evaluate the cultural heritage



Danish eGovernment strategy and where we are heading

WHAT IS CORE DATA?

Core data is authoritative data covering the fundamental information needed for effective public sector administration. Core data is standardized in the following areas:

- Geography, roads, and real estate
- Properties, housing, buildings and addresses
- Personal identity, residence and family relations
- Companies and their key related persons
- Personal income, assets and education

Core data needs to be easier for the authorities to use. This means they have to be well-defined, well-documented and the entire process needs clearly defined quality goals. The distribution of core data also needs to be efficient and reliable.

- | | |
|---------------------------|-------------------------|
| Geographical Names | Coastline |
| Digital Elevation Model | Protected Sites |
| Administrative Units | Roads |
| Geographical Grid Systems | Railways and Ferry ways |
| Cadastral Parcels | Buildings |
| Addresses | Technical installations |
| Geographical Easements | Inland waters |
| Geographical Condominiums | Lakes |
| | Sea Regions |

Platinum sponsors:



FIG Working Week 2012

Rome, Italy 6–10 May

Knowing to: Manage the territory
Protect the environment
Evaluate the cultural heritage



Thank you for your attention!



Lars Erik Storgaard
 Danish National Survey and Cadastre
 Email: laers@kms.dk
 Web site: www.kms.dk and www.inspire-danmark.dk

Platinum sponsors:

