



The 3D Cadastre Prototype and Pilot in the Russian Federation

31-5-2012

Natalia Vandysheva, **Sergey Sapelnikov**, **Peter van Oosterom**, Marian de Vries,
Boudewijn Spiering, Rik Wouters, Andreas Hoogeveen and **Veliko Penkov**

FIG Working Week 2012, Rome, Italy 6–10 May 2012,
TS08J – 3D Principles and Technology, Wednesday 9 May 2012, 14:00-15:30

Content

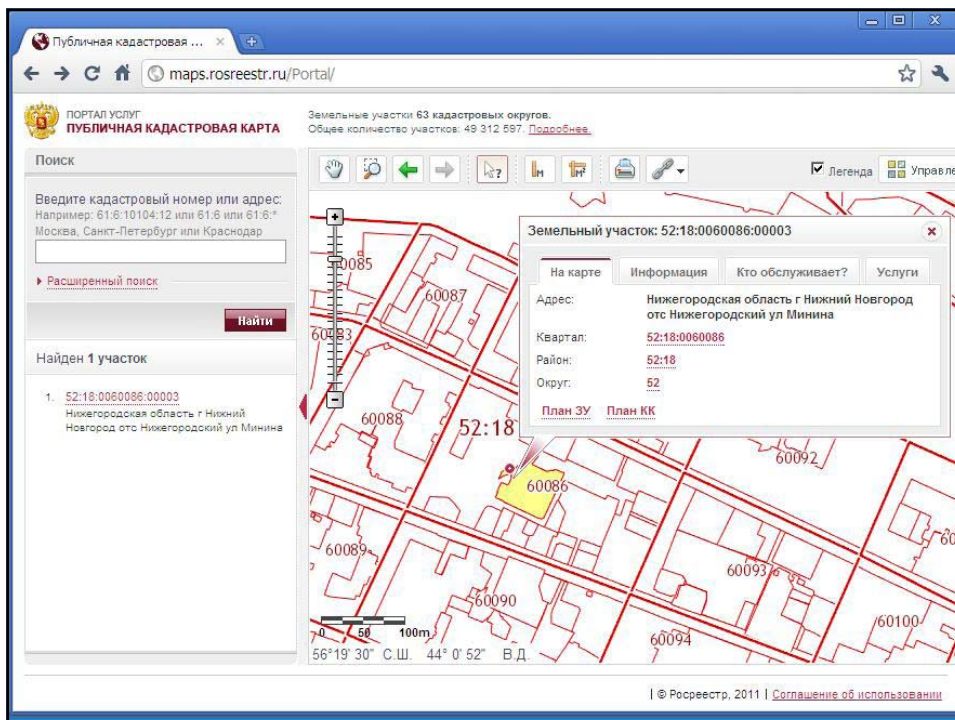
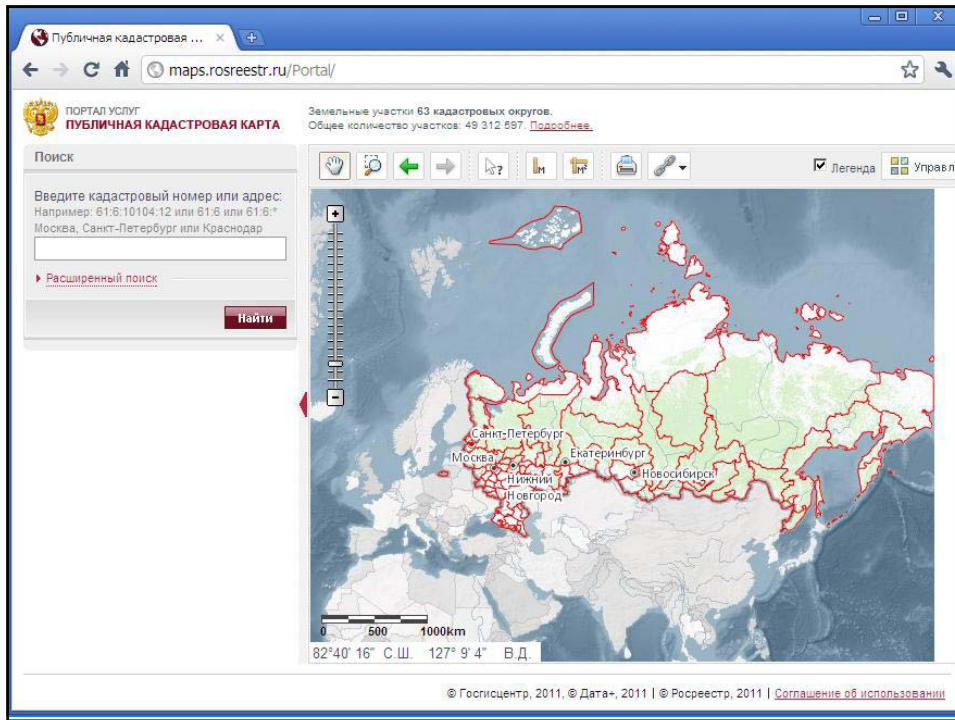
- **Introduction**
- 3D Cadastral Model
- Prototype Development
- 3D Sample Data
- Pilot
- Conclusion

The project: 3D Cadastre Modeling in Russia

- Aim: to provide guidance in the development of a prototype and to create favorable legal and institutional conditions for the introduction of 3D cadastre modeling in Russia ...
- ... better registration of complex buildings, or other types of constructions, and subsurface networks (e.g. cables, pipelines)
- Partners: Federal Service for State Registration, Cadastre and Cartography (**Rosreestr**), the Federal Cadastre Center (FCC) 'Zemlya' and the Netherlands' **Kadaster**
- with participation of: Delft University of Technology, and Royal Haskoning BV and Grontmij Netherlands BV
- Pilot area – Nizhny Novgorod

Rosreestr

- 6,500 offices
- 60,000 staff members
- 80 million parcels registered
- together with RRRs and parties
- probably the world's largest cadastral system
- parcels and legal information online:
<http://maps.rosreestr.ru/Portal/>

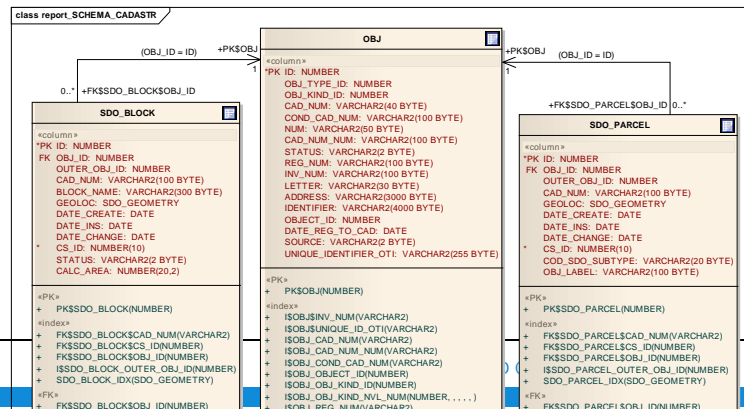


Content

- Introduction
- 3D Cadastral Model
- Prototype Development
- 3D Sample Data
- Pilot
- Conclusion

The Russian Cadastre knows 5 types of cadastral objects

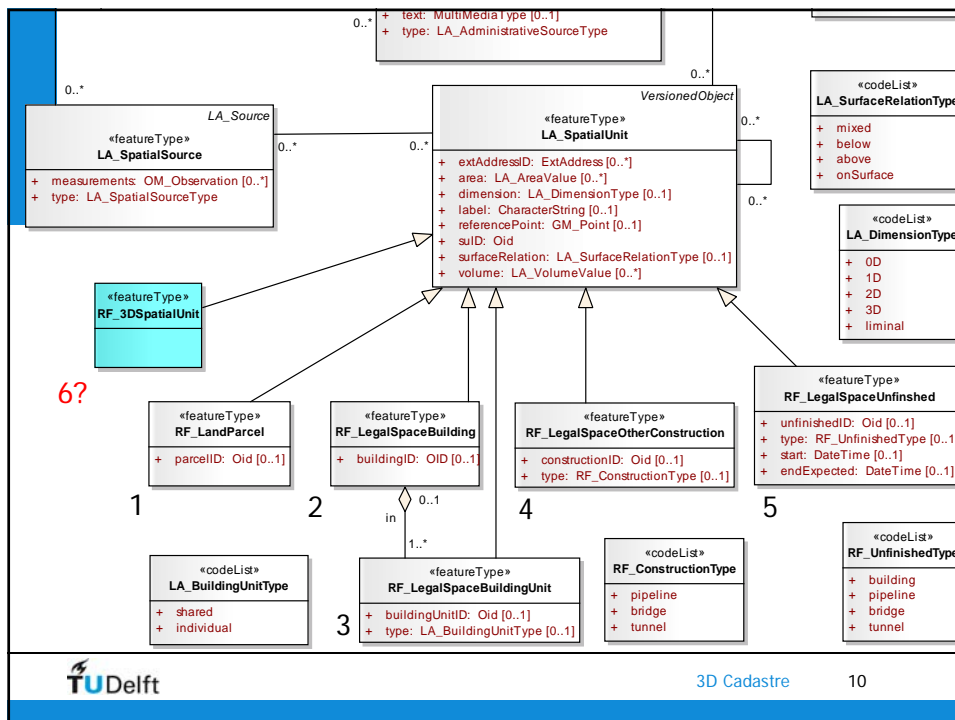
1. Land parcel
2. Building
3. Apartment unit
4. Other construction (bridge, pipeline, etc)
5. Unfinished objects (building, bridge, pipeline, etc)



Understanding the model → LADM

- Relationship between LADM concepts and the Cadastre and Registration databases of Rosreestr

LADM entity	Tables in the databases	
	Schema Cadastre	Schema Registration
LA_BAUnit	Obj,Reg	Oni_List
LA_Party	Right_Owner*, Encumbrance_Owner*	JRDP_List, PRSNF_List
LA_RRR	Right,Encumbrance	EGRP_*
LA_SpatialUnit	Entity_Spatial	-
LA_AdministrativeSource	Doc	EGRP_DocBS
LA_Source	EDoc_Info	-



3D Cadastre model 'extension'

- no need to change the legal/administrative part
- reference model the ISO 19152 (LADM)
- includes a 3D spatial profile
- 3D registration is based on two objects
 1. 3D polyhedron volume (flat planes) or
 2. 3D multicurve with diameter (curved surfaces around pipelines)
- no topology
- also no need to change spatial part (Oracle SDO_Geometry)
- XML encoding for registration (CityGML/LADM)

3D Solid CityGML LADM

```
<?xml version="1.0" encoding="utf-8"?>
<CityModel xmlns="http://www.opengis.net/citygml/1.0"
  xmlns:xsi="http://www.w3.org/2001/XMLSchema-instance"
  xmlns:xlink="http://www.w3.org/1999/xlink"
  xmlns:generic="http://www.opengis.net/citygml/generics/1.0"
  xmlns:gml="http://www.opengis.net/gml"
  xsi:schemaLocation="http://www.citygml.org/citygml/1.0/0
  http://schemas.opengis.net/citygml/1.0/cityGMLBase.xsd
  http://www.opengis.net/citygml/generics/1.0
  http://schemas.opengis.net/citygml/generics/1.0/generics.xsd">
  <gml:name>TU Delft example 3D Parcel for Cadastre</gml:name>
  <gml:boundedBy>
    <gml:Envelope srsDimension="3" srsName="urn:ogc:def:crs:EPSG:7.6:7415">
      <gml:lowerCorner srsDimension="3">84936.169 444962.883 0.0 </gml:lowerCorner>
      <gml:upperCorner srsDimension="3">86082.217 446807.742 90.0 </gml:upperCorner>
    </gml:Envelope>
  </gml:boundedBy>
  <cityObjectMember>
    <generic:GenericCityObject gml:id="Parcel_1">
      <creationDate>2011-04-01</creationDate>
      <generic:class>LA_LegalSpaceBuildingUnit</generic:class>
      <generic:lod4Geometry>
        <gml:Solid>
          <gml:exterior>
            <gml:CompositeSurface>
              <gml:surfaceMember>
                <gml:Polygon>
                  <gml:exterior>
                    <gml:LinearRing>
                      <gml:pos>85514.91 445173.489 0.0</gml:pos>
                      <gml:pos>85511.709 445170.399 0.0</gml:pos>
                      <gml:pos>85510.892 445172.368 0.0</gml:pos>
                      <gml:pos>85514.066 445175.521 0.0</gml:pos>
                      <gml:pos>85514.91 445173.489 0.0</gml:pos>
                    </gml:LinearRing>
                  </gml:exterior>
                </gml:Polygon>
              </gml:surfaceMember>
            </gml:CompositeSurface>
          </gml:exterior>
        </gml:Solid>
      </generic:lod4Geometry>
    </generic:GenericCityObject>
  </cityObjectMember>
</CityModel>
```

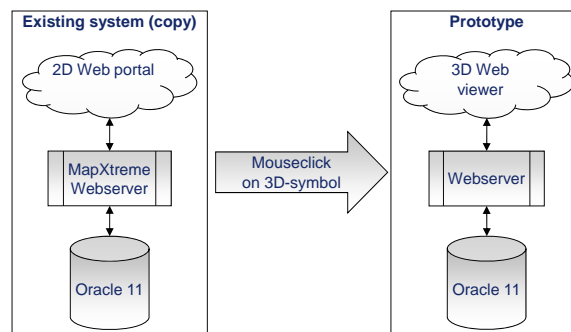
Content

- Introduction
- 3D Cadastral Model
- **Prototype Development**
- 3D Sample Data
- Pilot
- Conclusion

Focus first prototype on visualization and user interaction

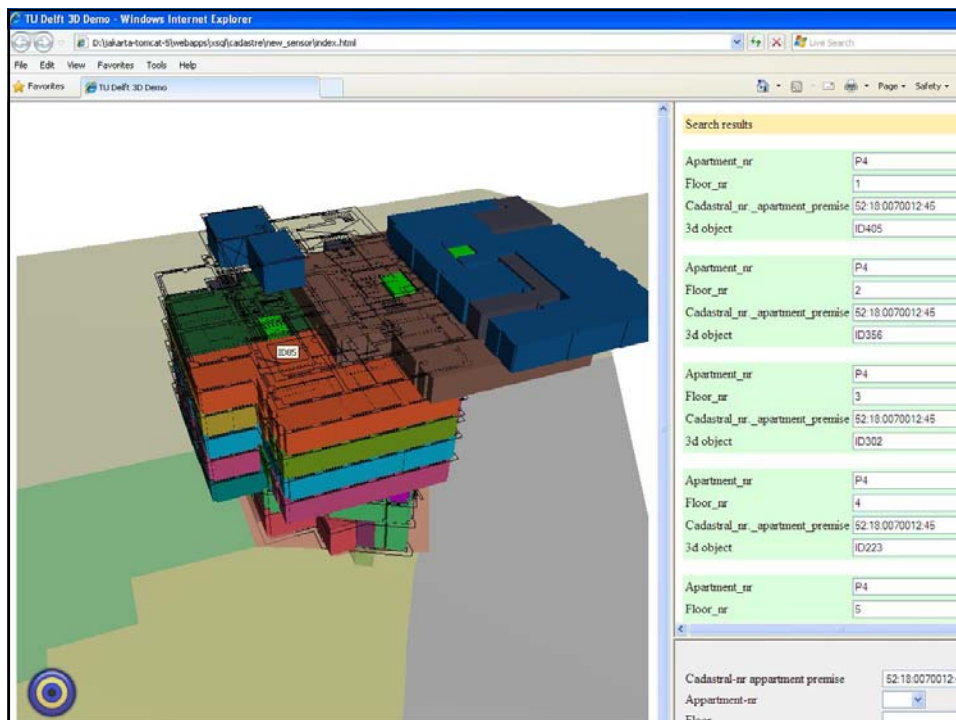
- MoSCoW method: M (MUST); S (SHOULD) C (COULD) W (WON'T) see paper for the choices

- Database
- Webserver
- 3D web viewer: BS Contact based (X3D viewer) by Marian de Vries
- Fitting in 2D portal



Prototype functionality

- Start via existing 2D cadastral portal: maps.rosreestr.ru/Portal
- Display/interact with objects in 3D: rotate, zoom, select, etc.
- Slide out layers of 3D objects
- Display administrative data: show id, cadastral number,...
- Alphanumerical selection on multiple attributes: owner name, id of cadastral object, address, type of right,...
- Configure 'hide / show' privacy data (depending on user)
- Show / hide layers (reference data): 2D cadastral map, DTM, topographic map, areal photograph, floor plans,...
- Link to photograph of selected 3D object
- Interface in Russian language



Content

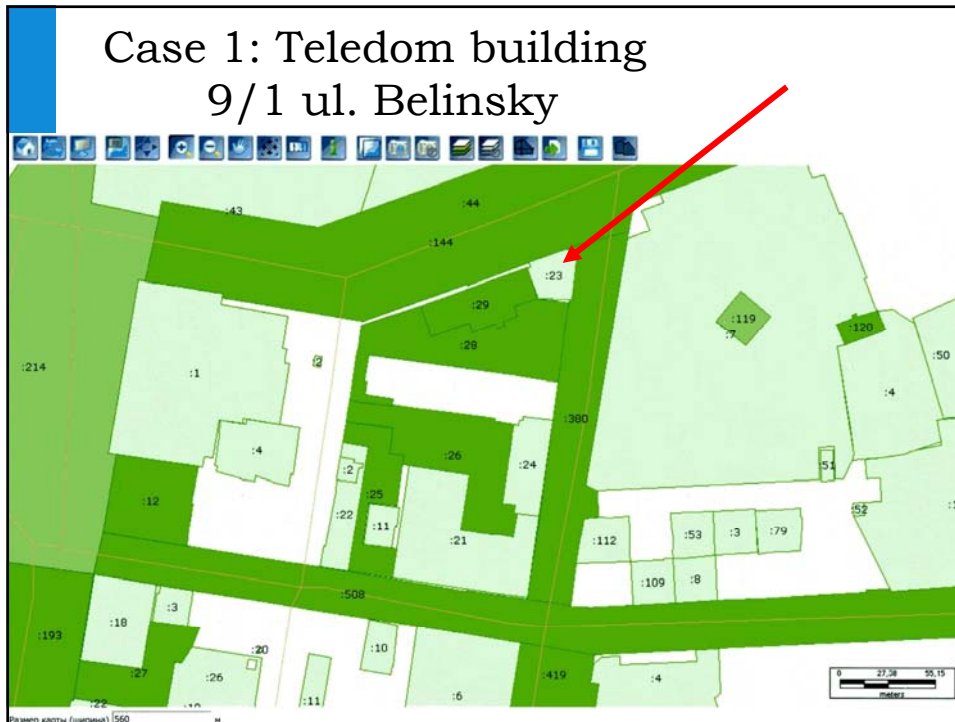
- Introduction
- 3D Cadastral Model
- Prototype Development
- 3D Sample Data
- Pilot
- Conclusion

Case 1: Teledom building 9/1 ul. Belinsky

- building has interesting **overhangs**, possible above neighbor parcel with shops and above public road/ footpath
- rights various units are individually recorded
 - basement (underground parking) + first 2 floors owned by bank
 - above this multi-floor columns (same at every floor) other owners
 - total 20 units in the building, with 10 different owners
 - **non-residential** units leased
 - lease longer than 1 year is registered



Case 1: Teledom building 9/1 ul. Belinsky



Move floors sideways
 Identify (click on apartment unit)
 Show floorplans

 Show walls
 Show ground parcels
 Show topography (only Teledom)
 Show DTM

Cadastral-#: 52:18:0070012:34	
Помещение	P7
Этаж	5
Кадастровый номер помещения	52:18:0070012:34
Кадастровый номер здания	52:18:0070012:30
Кадастровый номер ЗУ	52:18:0070012:23
Условный номер	52-52-01/769/2010-295
Адрес	Новгородская область, г. Новгород, ул. Великого, д. 9/48
Местоположение	
Назначение помещения	жилое
Вид права/форма собственности	Собственность
Правообладатель	Общество с ограниченной ответственностью «Лига»
Ограничения/обременения права	Ипотека, регистрация № 52-52-01/101/2010-057 от 14 сентября 2010 г., срок: до 01.01.2015 г.,
Площадь всех частей здания	706.1

Помещение:
 Этаж:
 Кадастровый номер:
 Кадастровый номер здания:
 Кадастровый номер ЗУ:

TU Delft 3D Cadastre 20

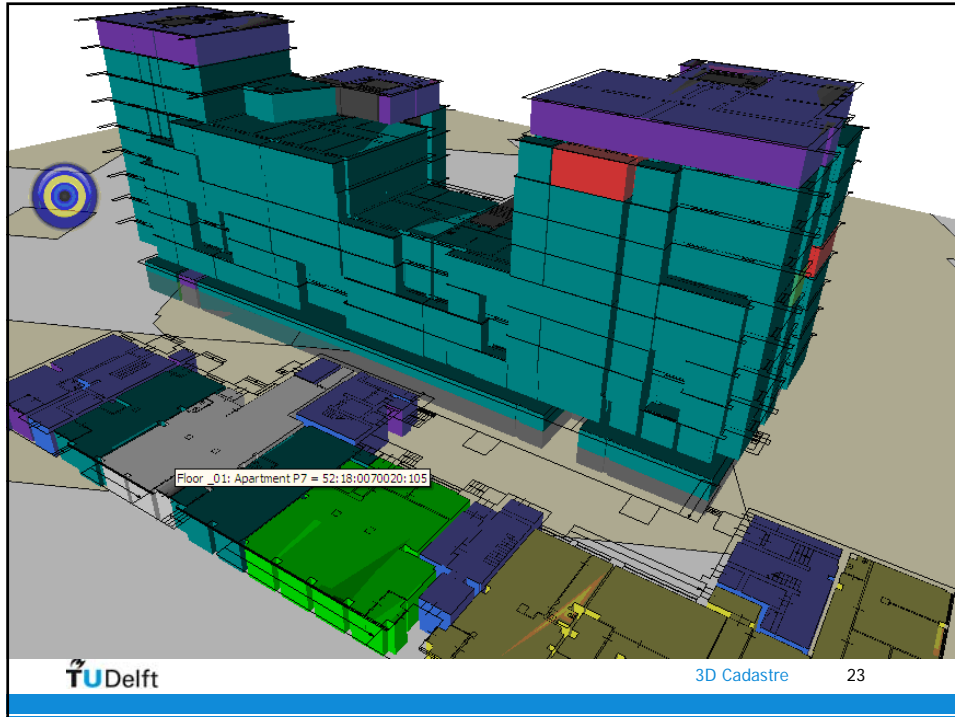
Case 2: Apartment complex, 66a Ulitsa Nevzorovykh

- ownership rights 88 apartments & 7 nonresidential premises
- subterranean parking in common shared ownership
- 6 mortgages are registered for residential units, under **both contract and law**
- land parcel is common property of apartment complex
- land parcel is registered as **unfinished object**



Case 2: Apartment complex, 66a Ulitsa Nevzorovykh





Case 3: short gas pipeline: Piskunov str. to Verhnevolzhskaya naberezhnaya, 7

- Pipeline length 72,73 m, Pipeline diameter 50 mm
- object got one owner: Nizhegorodoblغاز Co
- **crossing multiple parcels/different owners**
- Pipeline got two exits on surface (hatches), for which two special land parcels are allotted



Case 3: short gas pipeline

Search results	
Real_estate_object_name	Газопровод низкого давления
Cadastral_nr_real_estate_object	52:18:0000000:520
Registration_nr_techical_passport	52-52-01/754/2009-130
Cadastral_nr_parcel	52:18:0060085:21
Purpose_of_use	Нежилое
Address	Нижегородская обл., г. Нижний Новгород
Length_m	72.73
Diameter_mm	50
Depth_m	1.05
Right_type	Собственность
Right_holder	ООО «Нижегородоблгаз»
3d object	ID53

- When pipeline (purple) is selected, its attributes are displayed

Content

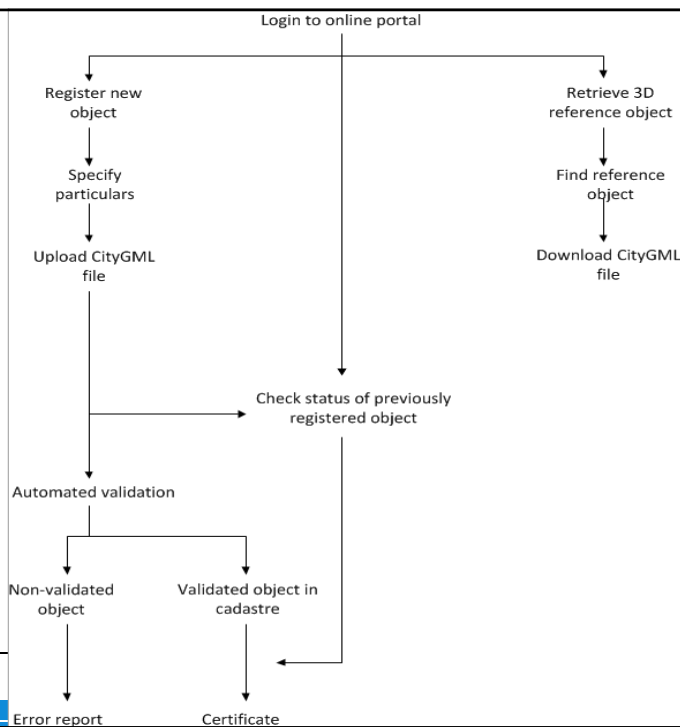
- Introduction
- 3D Cadastral Model
- 3D Sample Data for the Prototype
- Prototype Development
- **Pilot**
- Conclusion

Pilot goals

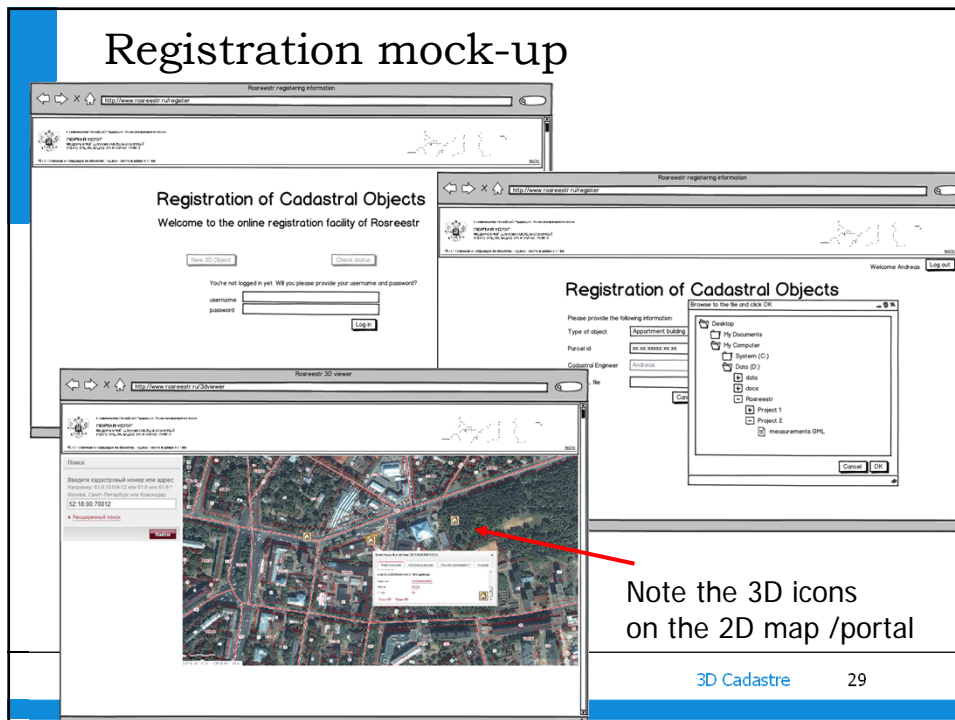
- Pilot results
 1. Better understanding benefits 3D Cadastre by stakeholders
 2. Insight project team opportunities/limitations
 3. Experience actual implementation
- Active (April 2012) and passive (online) pilot
<http://www.gdmc.nl/3drussia/pilot/>
- Participants provided input
- Prototype focus on dissemination/visualization
- Initial registration 3D objects via mock-up

Overall workflow

- Registration all mock-up



Registration mock-up



Content

- Introduction
- 3D Cadastral Model
- 3D Sample Data for the Prototype
- Prototype Development
- Pilot
- Conclusion

3D Object sources

- Direct survey in 3D, not tested in the current project
- Upgrade existing 2D floor plans to 3D volumes: manual in the prototype, in the future more automation
- New buildings designed (CAD) direct in 3D, with limited additional effort (and clear guidelines) result in 3D cadastral objects registration (this could be first tested; e.g. Skolkovo area).



Conclusion

- Model impact was minimal (no changes legal model)
- Data capture in 3D was new (non-trivial)
- 3D web viewer also challenging, several alternatives tested
- Next steps:
 1. Use proposal for 'favorable legal and institutional conditions'
 2. Realize production environment:
 - register new 3D parcels
 - validate 3D parcels (closed, no overlap)
 - store in Oracle 11g production database
 - improve web-based 3D query & viewing tool
 3. Operational test (real 3D transactions & registration, Skolkovo)

Acknowledgements

- Thanks to (former) project team members: Oleg Schwarz, Modest Yakubovich, Vladimir Tikhonov, Vasily Romanov, Irina Yufereva, Natalia Korionova, Chrit Lemmen, Jantien Stoter, Sisi Zlatanova and Hendrik Ploeger
- The Dutch Government is supporting this project '3D Cadastre Modelling in Russia (G2G10/RF/9/1)' via its 'EVD' Agency for International Business and Co-operation (of the Dutch Ministry of Economic Affairs, Agriculture and Innovation)
- This research is supported (at TU Delft side) in part by the Dutch Technology Foundation STW (project numbers 11300 and 11185), which is part of the Netherlands Organisation for Scientific Research (NWO) and partly funded by the Ministry of Economic Affairs, Agriculture and Innovation