

FIG Task Force on FIG Commission Structure

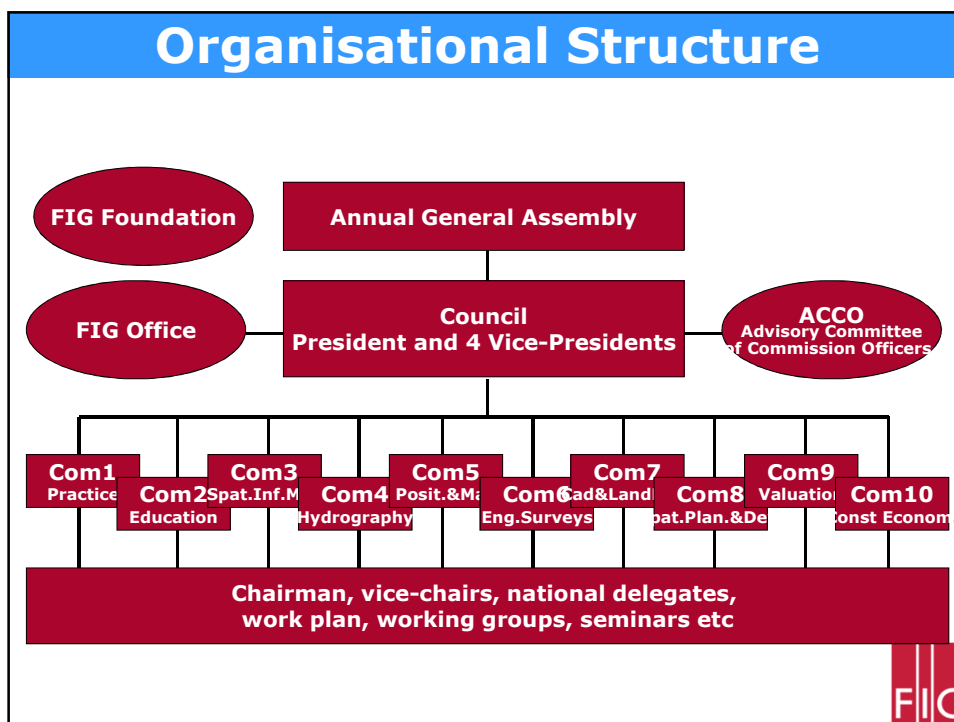
Mikael Lilje, chair of the task force



Current commission structure

- Commission 1 – Professional Standards and Practice
- Commission 2 – Professional Education
- Commission 3 – Spatial Information Management
- Commission 4 – Hydrography
- Commission 5 – Positioning and Measurement
- Commission 6 – Engineering Surveys
- Commission 7 - Cadastre and Land Management
- Commission 8 – Spatial Planning and Development
- Commission 9 – Valuation and the Management of Real Estate
- Commission 10 – Construction Economics and Management





The task force is based on two proposals

Proposal from Geosuisse submitted 2014 regarding how commission chairs elect are elected

Proposal regarding Structural Improvements submitted 2015 by

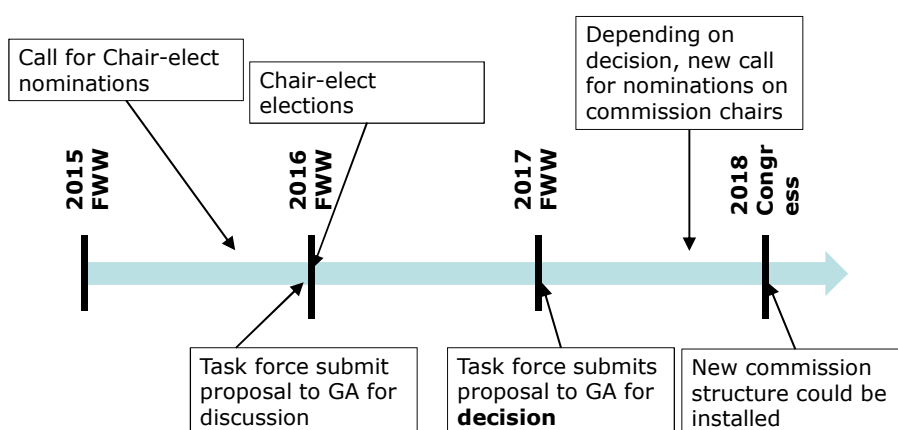
- Danish Association of Chartered Surveyors (Denmark)
- Finnish Association of Geodetic and Land Surveyors MIL (Finland)
- Norges Jordskifte kandidatforening, faglig gruppe av Tekna ([NJKE](#)) (Norway)
- Swedish professionals for the built environment

The task force will ...

- evaluate the current commission structure and content. This will also include relations to the Council, ACCO and other international organisations.
- present a proposal(s) at the FWW in 2016 with (perhaps) a new structure implemented by 2018.
- We should also review the process regarding chairs-elect for commissions trying to optimise how we secure highly-motivated, active commission chairs.



Timeline



Task Force Members

- Mikael Lilje, chair of Task Force
- Brian Coutts
- Diane Dumashie
- Henning Elmstrøm
- Kate Fairlie
- Brent Jones
- Jürg Kaufmann
- Robert Sarib
- Karl-Friedrich Thöne



Tasks of the task force

- Number of Commissions – content of the Commissions – tasks of the commissions
- Commissions – Task Force – Working Groups
- Cooperation between Council and Commissions as well as Commissions and other international organisations
- Process to identify commission chairs



What are your thoughts regarding the commissions, the number of commissions, their focus and how we secure that mega trends (as climate change, urbanization) as well as new technology and focus (as 3D, BIM) and efficiently dealt with within FIG?

What are your thoughts regarding an efficient commission structure in FIG?

