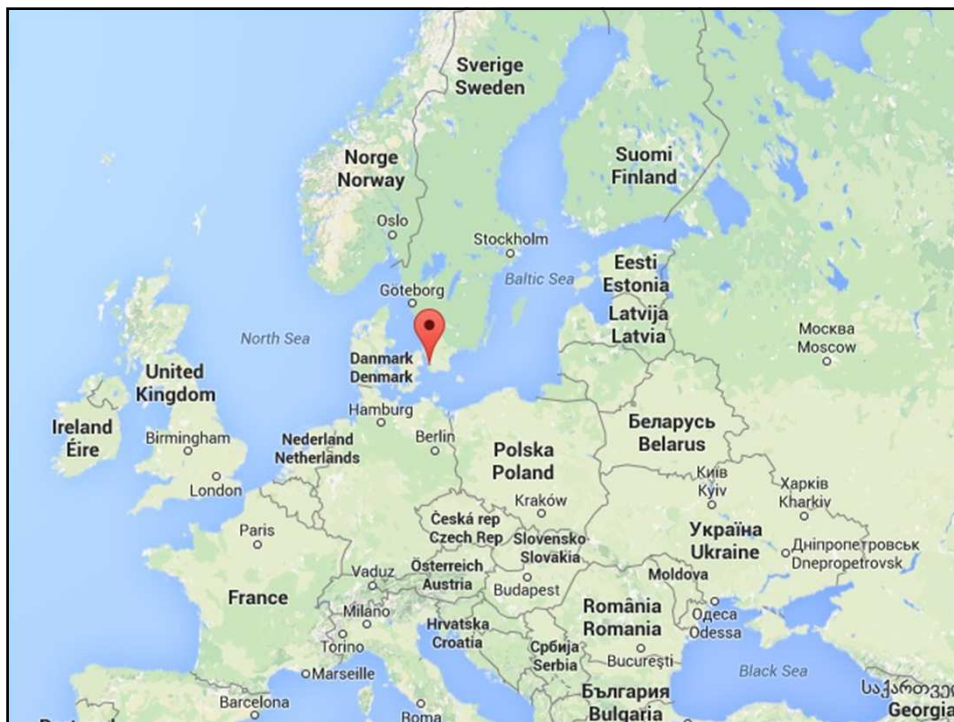
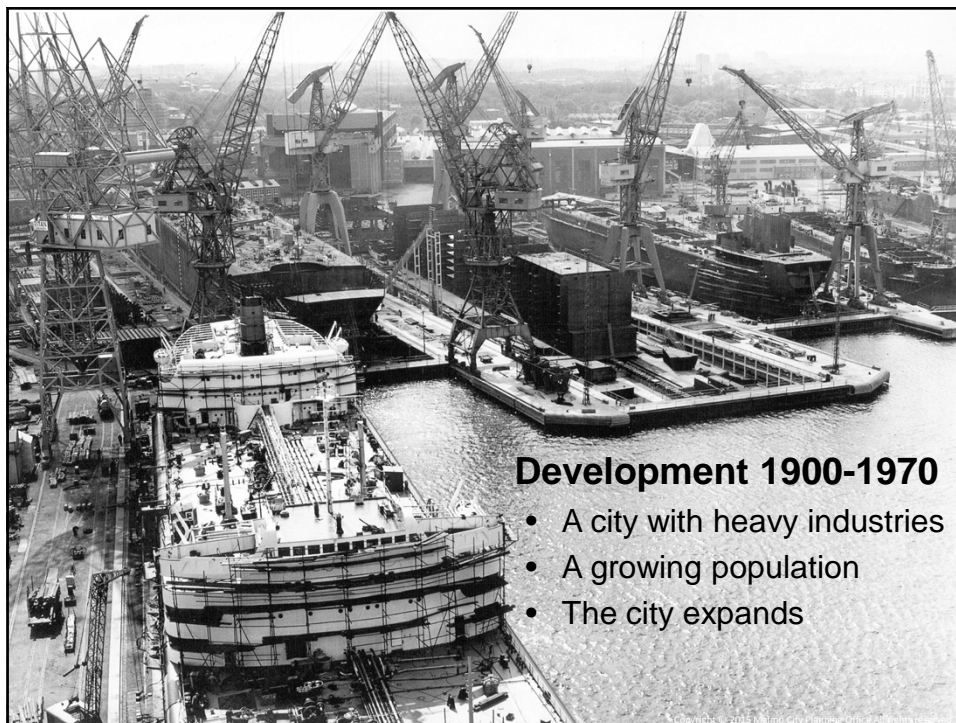


# Malmö (Sweden), a City in Transition: Challenges We Face as the City Expands

Julia Berglund, Real Estate Office,  
City of Malmö, Sweden

FIG Working Week  
17-21 May, Sofia

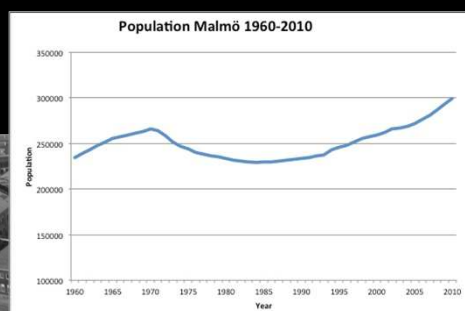






## Development 1970-1990

- A decline in industrial sector
- A national banking crises
- The population decreases
- Growing unemployment



Copyright © 2015 Malmö City Planning Office All rights reserved.

## Development 1990-2014

Several strategic decisions and large investments have reversed the negative trend

- Changes in the tax system
  - Tax income equalization across municipalities (1995)
- Major investments
  - The Malmö – Copenhagen bridge (2000)
  - The City Tunnel (2010)
  - Malmö University College (1998)
  - The housing exhibition Bo1 (2001)







The bridge between Malmö and Copenhagen (2000)

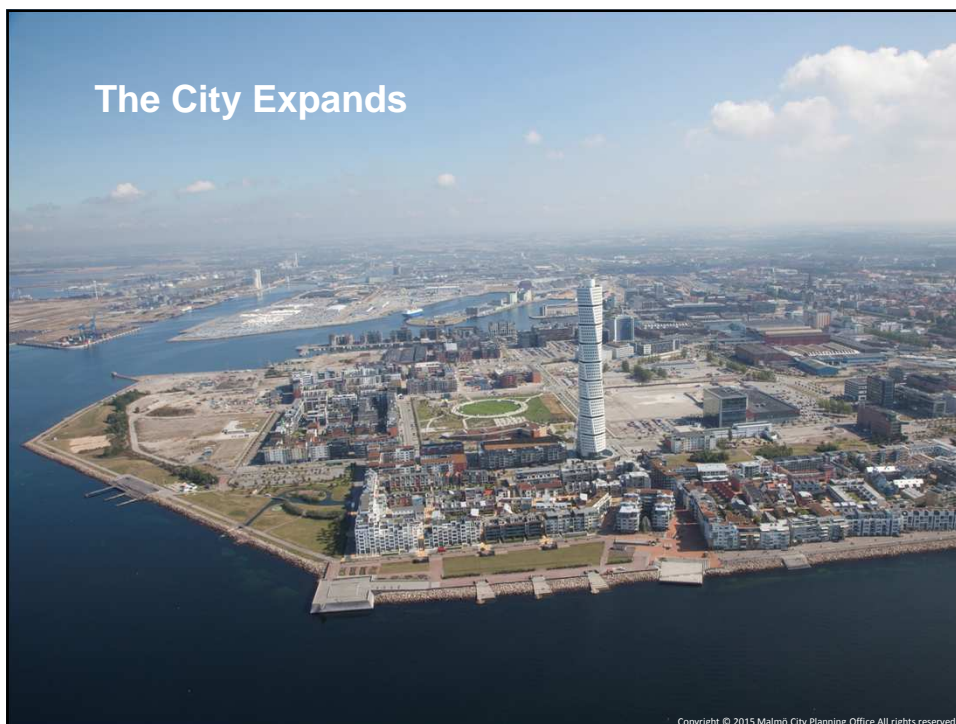
Copyright © 2015 Malmö City Planning Office All rights reserved.



The City Tunnel (2010)

Copyright © 2015 Malmö City Planning Office All rights reserved.

Copyright © 2010 Maria Nyman-Möritz All rights reserved.







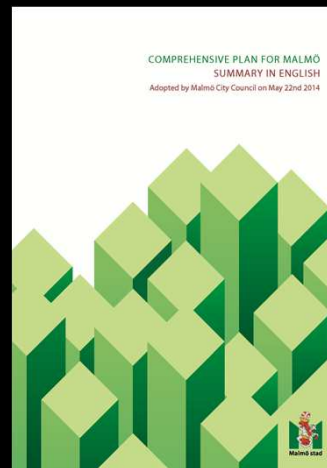




## Future development A plan for future growth

A new comprehensive plan (2014)

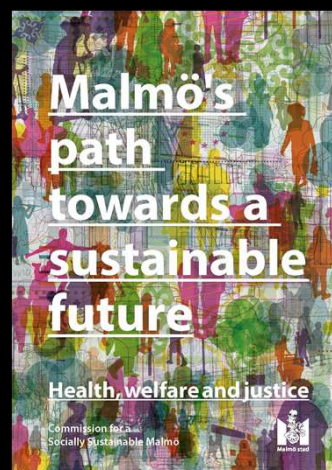
- The city will grow within its present boundaries in existing urban areas
- The urban areas should be a combination of residential, commercial, recreational areas and public services



## Future development A plan for future growth

Commission for a Socially Sustainable Malmö (2013)

- Proposed actions for reducing health inequities
- Suggested targets how urban planning and development can contribute to a more socially sustainable city



## Future development Future challenges

### Redeveloping urban areas

- Higher costs due to pollution, noise, existing infrastructure etc.

### Suburb areas need urban renewal for better social integration

- Investors are hesitant
- Purchasing power is low
- A growing awareness of social responsibility from developers and investors

