



FIG CHAMBER OF GRADUATED SURVEYORS

FIG Working Week
17 - 21 May, Bulgaria
From the wisdom of the ages
to the challenges of modern world

FIG SOFIA 2015

**COSTING AND FINANCING LAND ADMINISTRATION SERVICES (COFLAS):
PROGRESS & NEXT STEPS**

Presenter: Rebecca Ochong, GLTN/UN-Habitat

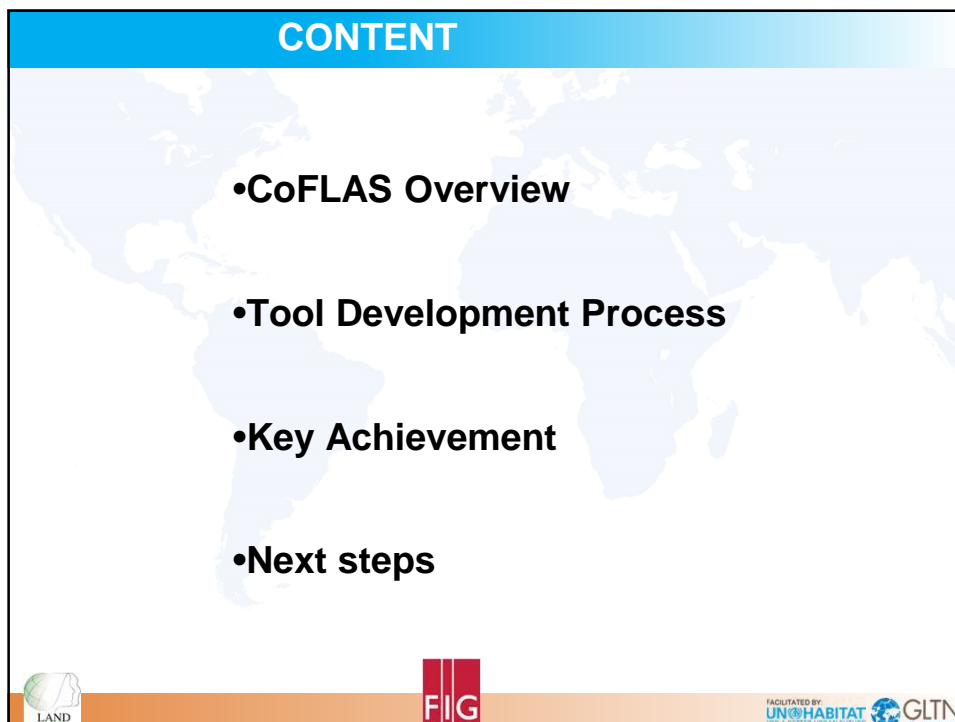
Authors:
Solomon Haile, GLTN/UN-Habitat
Rebecca Ochong, GLTN/UN-Habitat
Tony Burns, Land Equity International
Kate Fairlie, Land Equity International

LAND

FIG

FACILITATED BY:
UN HABITAT
FOR A BETTER URBAN FUTURE

GLTN
GLOBAL LAND TOOL NETWORK



CONTENT

- CoFLAS Overview
- Tool Development Process
- Key Achievement
- Next steps

LAND

FIG

FACILITATED BY:
UN HABITAT
FOR A BETTER URBAN FUTURE

GLTN
GLOBAL LAND TOOL NETWORK

WHY COFLAS?

- Need for building a '**Business Case**' for Land Administration Services (LAS) through an **appropriate costing and financing** tool particularly in developing countries
 - LAS mainly funded from treasury most of which goes to fund re-current expenditure
 - Demand for better services at reduced cost – 'Do more for less'
- Diminishing development assistance to fund capital costs
 - Recurring financial crisis
 - Shifting focus to other priorities like food security, infrastructure, water, sanitation, education, health, etc



FIG

FACILITATED BY
UN HABITAT
FOR A BETTER URBAN FUTURE
GLTN
www.glt.net

OPPORTUNITIES

- '**Modernising Budgetary Approach of Land Agencies**'
 - Rethinking fundamentally how to do work in order to rationalize use of treasury resources and seek additional funding
 - New technologies
 - Innovative thinking in land administration e.g. **Continuum of Land Rights, Fit-for-purpose land administration**, etc
- Look at cost implications of key decisions in establishing and operating a LAS
- Challenges and opportunities basis upon which CoFLAS is built on



FIG

FACILITATED BY
UN HABITAT
FOR A BETTER URBAN FUTURE
GLTN
www.glt.net

WHAT DO WE KNOW?

- All well established LAS have evolved over long periods (simple systems with limited cover > sophisticated systems with wide cover)
- Policy-makers aiming for 'modern' systems in shorter timeframe
- LAS reform projects long timeframe, large investment
- Governments and Development Partners need to prioritise their investments



WHAT DO WE KNOW?

- All well established LAS have evolved over long periods (simple systems with limited cover > sophisticated systems with wide cover)
- Policy-makers aiming for 'modern' systems in shorter timeframe
- LAS reform projects long timeframe, large investment
- Governments and Development Partners need to prioritise their investments



COFLAS: Towards a Definition

A set of guidelines and tabular framework that allows for exploring, identifying and prioritizing land administration service (LAS) delivery options based on costs of developing and running the services, financial resources available to pay for them, as well as other considerations such as human capacity and strategic decisions like service coverage.

The tabular costing structure built in the tool assists government staff to prepare and assess LAS reform proposals whilst at the same time taking into consideration the variation in approaches that would have an impact on the cost and viability of the reform.



FIG

FACILITATED BY
UN HABITAT
FOR A BETTER URBAN FUTURE
GLTN
GLOBAL LAND TOOL NETWORK

STATED OBJECTIVES FOR COFLAS

- Develop a useful and practical methodology (tool) whereby the **costing** and **financing** of land administration services in **developing countries** can be **reformed and modernized** with a view to enabling the agencies provide **cost effective, efficient, sustainable** and **affordable** services.
- The methodology, where appropriate and through **incremental process**, ought to lead to some kind of **cost recovery**, but without **compromising quality of services** provided and **limiting access to services especially of the poor and vulnerable**



FIG

FACILITATED BY
UN HABITAT
FOR A BETTER URBAN FUTURE
GLTN
GLOBAL LAND TOOL NETWORK

PRIMARY TARGET USERS

- Land sector staff in preparing proposals for LAS reform
- Land sector policy makers in assessing/proposing a case for land reform
- Key government agencies in reviewing LAS reform proposals and ensuring value for money



GLTN PARTNERS & OTHERS INVOLVED IN COFLAS



COFLAS: DEVELOPMENT PROCESS

- Preliminary investigation by Lantmäteriat in 2011
- Desk and literature review early in 2013
- Preliminary discussions with DG/SGs in Abuja in May 2013
- EGM in Rotterdam in May 2013
 - questionnaires and country case studies
- Piloting and refinement of questionnaires > data gathering
- EGM in Sweden in October 2013 > Clarification of scope
- Preparation and review of draft report in May/June 2014
- Presentation in FIG 2014 > DG/SG presentations, GLTN session
- Validation workshop in Bangkok October 2014
- Presentation in 2015 World Bank Land & Poverty Conference
- Pilots and refining of tool



INFORMATION FOR DESIGN OF COFLAS

- Literature review, desk survey of project experience
- Detailed questionnaire prepared and tested
- Data gathered from a range of countries:
 - Albania
 - Denmark
 - Georgia
 - Lesotho
 - Netherlands
 - New Zealand
 - Norway
 - Peru
 - Sweden
 - Thailand



EARLY CHALLENGES

- **Different needs for Developed/Developing LAS**
 - Do we look at getting critical mass (eg Ethiopia, Rwanda, etc)
 - Do we restrict the tool to approaches appropriate to developing countries
- **Definition of 'land administration services', or 'land services'**
- **Definition of 'land revenue'**
 - Annual property/land taxes (ground rent, lease payments, school levies, LGA rates, utility fees (water, sewerage, etc.) etc)
 - Transaction fees and taxes (fees, stamp duty, capital gains tax, etc.)
 - Other revenue (permits/approvals, sale of maps/data, GRN/CORS revenue, fees for registration of professionals, etc.)
 - Sale of state land (including urbanisation)



FIG

FACILITATED BY
UN HABITAT
FOR A BETTER URBAN FUTURE
GLTN
www.glt.net

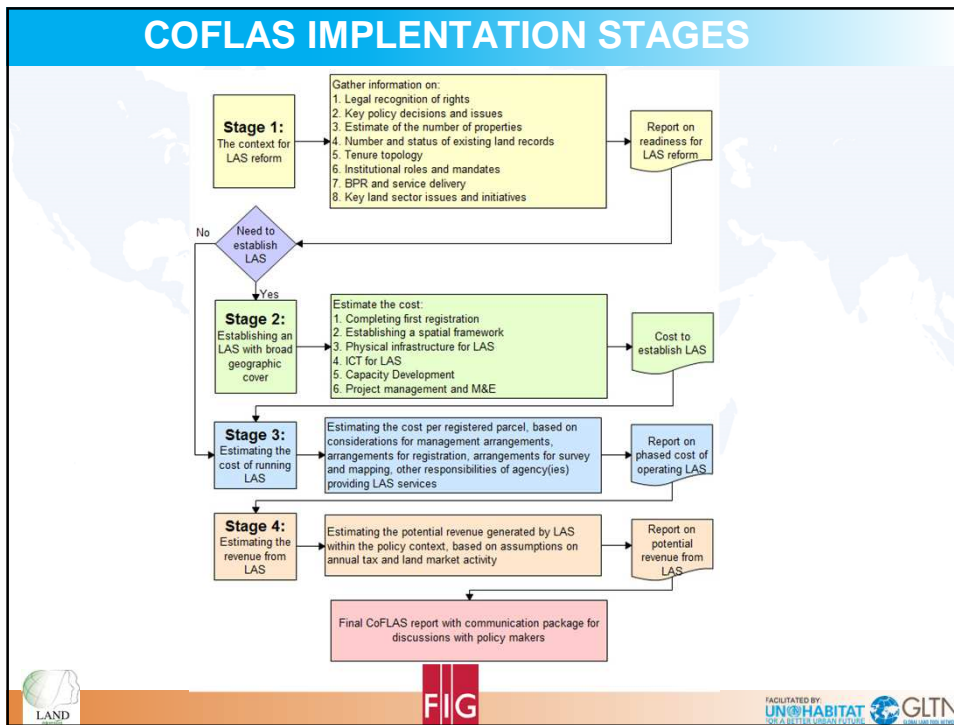
EARLY CHALLENGES

- **Defining costs**
 - Different levels of government (central/state/LGA)
 - Mixed responsibilities
 - Routine (recurrent)/Project (development)
 - Cost/expenditure categories
- **Sharing of revenue**
 - Levels of government
 - Private service providers
- **Evolving modes of service delivery**
 - Public service
 - Government trading enterprise
 - Mixed public/private service
 - PPP (eg Ontario, India)



FIG

FACILITATED BY
UN HABITAT
FOR A BETTER URBAN FUTURE
GLTN
www.glt.net



KEY ACHIEVEMENT

First version of the CoFLAS tool developed and validated by land industry

Report prepared for the Global Land Tool Network (GLTN)

Costing and Financing of Land Administration Services (CoFLAS)
In Developing Countries

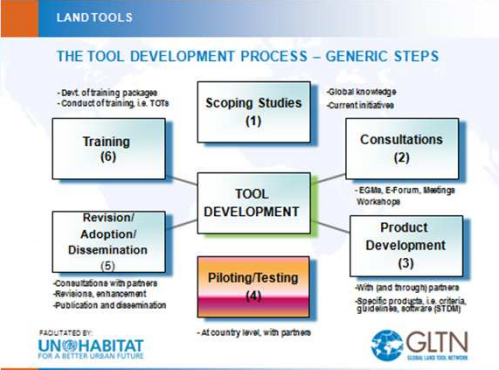
Land Equity International
15 October 2014

Contents	
Executive Summary	1
Chapter 1. Introduction	5
Chapter 2. Scope of the Tool	7
Chapter 3. Process for Developing CoFLAS	13
Chapter 4. Tool Description	14
4.1 Assessing the Readiness for LAS Reform	15
4.2 Establishing an LAS with Broad Geographic Cover	16
4.2.1 Completing First Registration	17
4.2.2 Spatial Framework	21
4.2.3 Physical Infrastructure and Staff Requirements	23
4.2.4 ICT	26
4.2.5 Capacity Development	29
4.2.6 Project Management	31
4.3 Running a LAS	32
4.3.1 Background and Information Gathered in Preparing CoFLAS	32
4.3.2 Comparison of Countries to a Common Benchmark	32
4.3.3 Analysis of Information on the Cost of LAS	33
4.3.4 Estimation of the Annual Cost of Providing LAS Services	34
4.4 Revenue Generated by LAS	35
Chapter 5. Financing LAS Reform	37
5.1 Raising Revenue or a Public Service?	37
5.1.1 Annual Taxes	37
5.1.2 Transaction Taxes, Fees and Charges	38
5.2 Financing Options	38
5.2.1 Funded by Government	39
5.2.2 Full or Partial Self-Financing	39
5.2.3 Private Sector Service Suppliers	39
5.2.4 Public-Private Partnership	40
5.3 Implications of Decisions on Financing	40
Chapter 6. Conclusions	42
Chapter 7. Reference Materials	43
Glossary and Definitions	46

LAND **FIG** FACILITATED BY UN HABITAT FOR A BETTER URBAN FUTURE GLTN

NEXT STEPS

- Pilot CoFLAS in Tanzania & Lesotho
- Identification of other pilot activities
- Tool refinement based on pilot experience



FIG

FACILITATED BY: UN HABITAT FOR A BETTER URBAN FUTURE



COSTING AND FINANCING LAND ADMINISTRATION SERVICES (COFLAS)

NEED TO KNOW MORE?

GLTN Secretariat
UN-Habitat, P.O Box 30030, Nairobi 00100, Kenya

gln@unhabitat.org
www.gln.net

FACILITATED BY:
UN HABITAT
FOR A BETTER URBAN FUTURE

