

**FIG**  
2018  
ISTANBUL



**Presented at the FIG Congress 2018,  
May 6-11, 2018 in Istanbul, Turkey**

**XVI FIG Congress 2018**  
**6-11 May 2018**  
**ISTANBUL**

# FIG Congress 2018



**EMBRACING OUR SMART WORLD WHERE THE CONTINENTS CONNECT:  
ENHANCING THE GEOSPATIAL MATURITY OF SOCIETIES**

ORGANISED BY



MAIN SUPPORTERS



PLATINUM SPONSORS





# XXVI FIG Congress 2018

6-11 May 2018 ISTANBUL

EMBRACING OUR SMART WORLD WHERE THE CONTINENTS CONNECT:

ENHANCING THE GEOSPATIAL MATURITY OF SOCIETIES

## Challenges and Opportunities in Developing Innovative Geospatial Tools for Fit-For-Purpose Land Rights Mapping



This project has received funding from the European Union's Horizon 2020 research and innovation programme, under Grant Agreement No 687828



Horizon 2020  
European Union funding  
for Research & Innovation

**Mila Koeva,**  
**Sophie Crommelinck, Claudia Stöcker, Joep Crompvoets, Serene Ho, Ine Buntinx, Angela Schwering, Malumbo Chipofya, Sahib Jan, Tarek Zein, Christian Timm, Kaspar Kundert, Placide Nkerabigwi, Berhanu Alemie, Robert Wayumba**

ORGANISED BY



MAIN SUPPORTERS



PLATINUM SPONSORS





6-11 May 2018 ISTANBUL

EMBRACING OUR SMART WORLD WHERE THE CONTINENTS CONNECT:

ENHANCING THE GEOSPATIAL MATURITY OF SOCIETIES

## The Land Tool Evolution

Only 30% of the world's population has access to formal land administration systems to register and protect their land rights.

Mapping cadastral boundaries using traditional, field based methods often proves to be time, cost and labour intensive.



6-11 May 2018 ISTANBUL

EMBRACING OUR SMART WORLD WHERE THE CONTINENTS CONNECT:

ENHANCING THE GEOSPATIAL MATURITY OF SOCIETIES

## The Land Tool Evolution

Recently there are many evidences that show that the existing ICT-based approaches for land tenure recording – do not deliver what is expected.

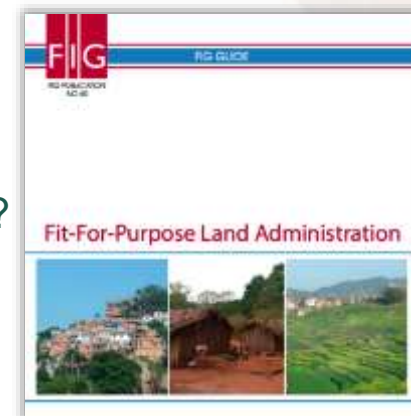
- **1<sup>st</sup> Generation – Conventional**

- precise, expensive, complex procedures,
- requiring specialists, imported, government driven (mostly)



- **2<sup>nd</sup> Generation – Pro-Poor / Fit-for-Purpose**

- cheaper, less accurate, simpler, barefoot, para-surveyors,
- bottom-up, manual, participation, grass roots, diversity, scalable...?



- **3<sup>rd</sup> Generation – Socio-Technical Fusion**

- high tech, human touch, partnerships, innovation/market focused,
- end-user driven, automation, artificial intelligence, robotics

ORGANISED BY



MAIN SUPPORTERS



PLATINUM SPONSORS







# XXVI FIG Congress 2018 ITS4LAND

6-11 May 2018 ISTANBUL

EMBRACING OUR SMART WORLD WHERE THE CONTINENTS CONNECT:  
ENHANCING THE GEOSPATIAL MATURITY OF SOCIETIES

**Program:** H2020-ICT-2015

**Type of Action:** Research and Innovation (RIA)

**Topic:** International partnership building in low and middle income countries

**Acronym:** its4land

**Number:** 687828

**Duration:** 48 months

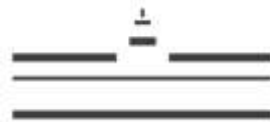
**Start Date:** 2016-02-01

**Consortium:** 8 partners

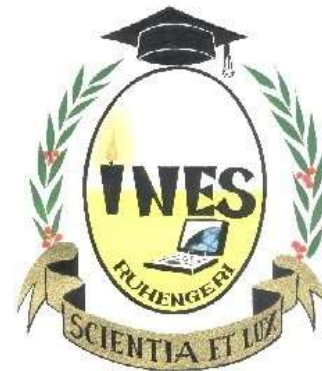
**Budget:** 3.9 M EUR



UNIVERSITY OF TWENTE.



WESTFÄLISCHE  
WILHELMS-UNIVERSITÄT  
MÜNSTER



TECHNICAL UNIVERSITY OF KENYA



ORGANISED BY



MAIN SUPPORTERS



PLATINUM SPONSORS





6-11 May 2018 ISTANBUL

EMBRACING OUR SMART WORLD WHERE THE CONTINENTS CONNECT:

ENHANCING THE GEOSPATIAL MATURITY OF SOCIETIES

## Its4land - Aim

To develop innovative tools to make  
land rights mapping  
faster, cheaper, easier, and more responsible

ORGANISED BY



MAIN SUPPORTERS



PLATINUM SPONSORS



6-11 May 2018 ISTANBUL

EMBRACING OUR SMART WORLD WHERE THE CONTINENTS CONNECT:

ENHANCING THE GEOSPATIAL MATURITY OF SOCIETIES

## Its4land - Innovation

The innovation process incorporates a broad range of stakeholders and emergent geospatial technologies including:

- Smart sketch maps
- Unmanned Aerial Vehicles (UAVs)
- Automated feature extraction
- Sharing and publishing through geocloud services

The aim is to combine these innovative approaches with the specific needs, market opportunities and readiness of end-users in the domain of land tenure information recording in East Africa.

ORGANISED BY



MAIN SUPPORTERS



PLATINUM SPONSORS







6-11 May 2018 ISTANBUL

EMBRACING OUR SMART WORLD WHERE THE CONTINENTS CONNECT:

ENHANCING THE GEOSPATIAL MATURITY OF SOCIETIES

## Case locations

**RWANDA** - developing approaches that can support updating, at scale, land rights documents and maps

**KENYA** - adapting tools to enable mapping of pastoralist land rights and layered disputes

**ETHIOPIA** - developing approaches that improve plot recordation of urban smallholder and dwellers (peri-urban and rural landscapes)



ORGANISED BY



MAIN SUPPORTERS



PLATINUM SPONSORS





## Contextualization - Get Needs

KUL – Capture the specific needs, market opportunities, and readiness of end-users in the domain of land tenure information recording.

In 2017, they engaged with 57 organizations and community groups across the three case countries (more than 100 individuals) – Ethiopia, Kenya and Rwanda



6-11 May 2018 ISTANBUL

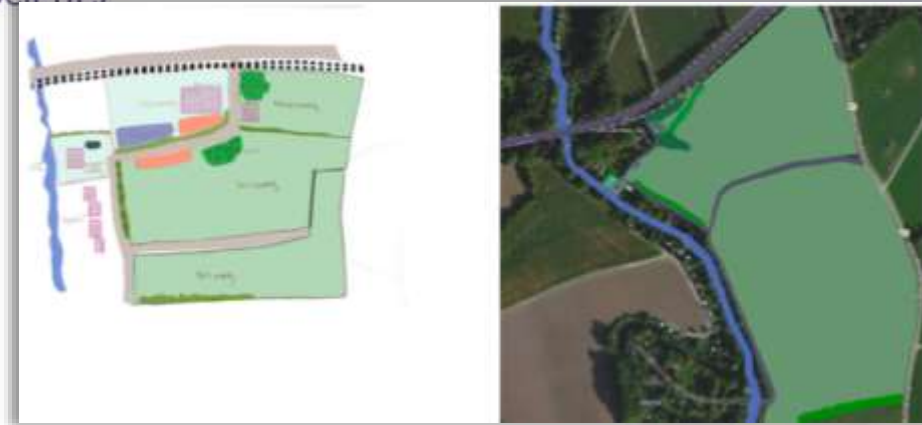
EMBRACING OUR SMART WORLD WHERE THE CONTINENTS CONNECT:

ENHANCING THE GEOSPATIAL MATURITY OF SOCIETIES

## Draw and Make

WWU Munster -  
Implementation of a sketch  
based geospatial data  
recording to capture land  
tenure data from local  
perspective.

Field visits to Kajiado,  
Kenya and Bahir-Dar  
Ethiopia  
(data collection, data  
verification/validation)





6-11 May 2018 ISTANBUL

EMBRACING OUR SMART WORLD WHERE THE CONTINENTS CONNECT:

ENHANCING THE GEOSPATIAL MATURITY OF SOCIETIES

## Draw and Make – main activities

Development of

1. A domain model for representing sketch maps
2. A system for automatic recognition of land tenure sketch maps;
3. Spatial models for representing sketch maps as land tenure records;
4. Embedding land tenure sketch maps within existing spatial data sets (sketch map alignment).
5. LADM extensions to integrate local domain models

ORGANISED BY



MAIN SUPPORTERS



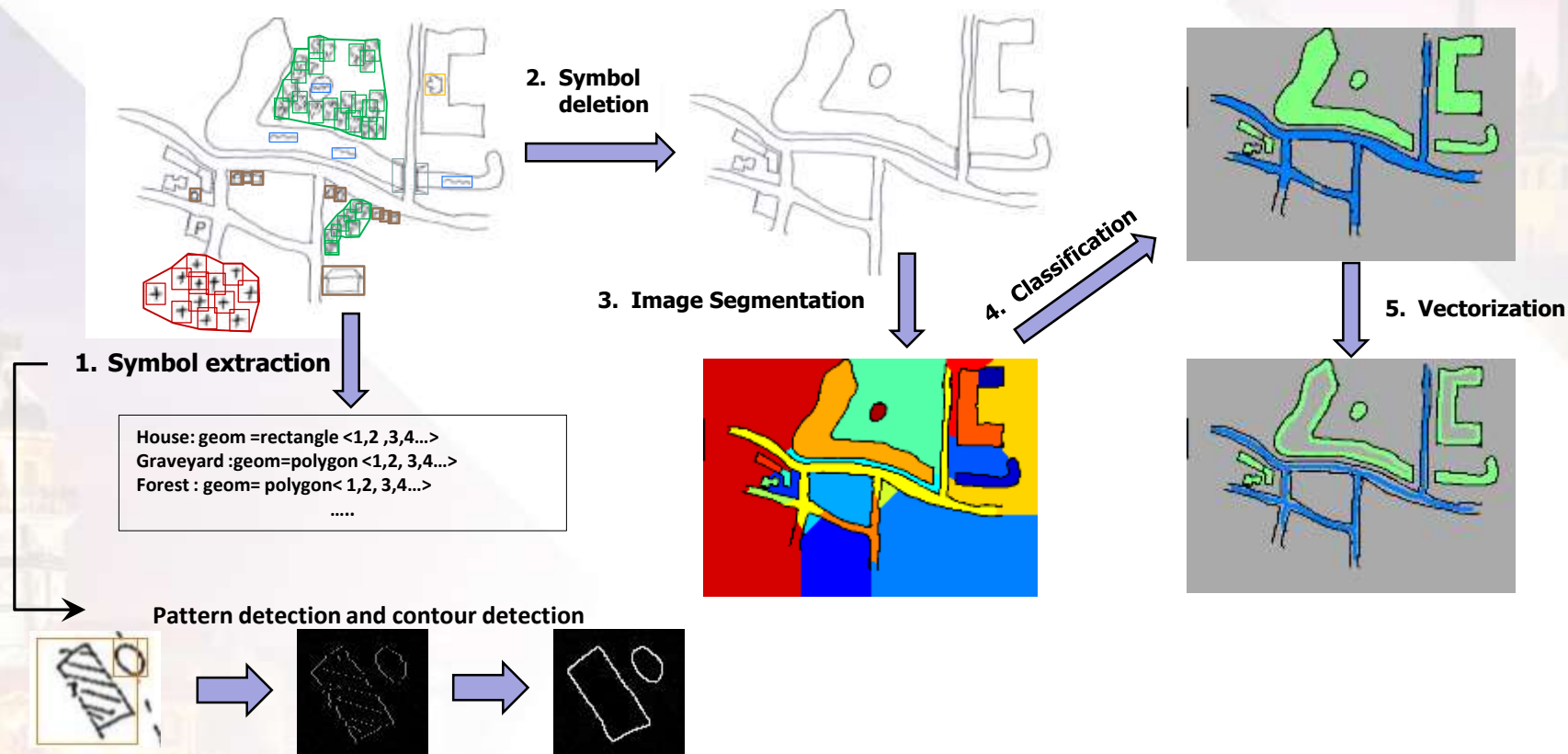
PLATINUM SPONSORS





**6-11 May 2018 ISTANBUL**  
**EMBRACING OUR SMART WORLD WHERE THE CONTINENTS CONNECT:**  
**ENHANCING THE GEOSPATIAL MATURITY OF SOCIETIES**

## Draw and Make – task overview (Object recognition)



ORGANISED BY



MAIN SUPPORTERS



PLATINUM SPONSORS







6-11 May 2018 ISTANBUL

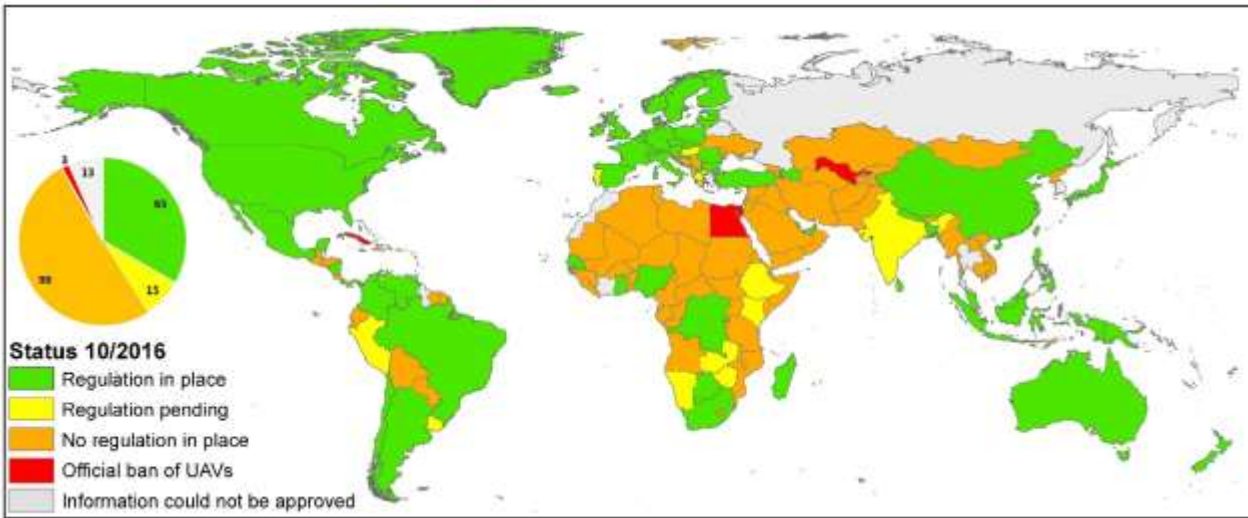
EMBRACING OUR SMART WORLD WHERE THE CONTINENTS CONNECT:

ENHANCING THE GEOSPATIAL MATURITY OF SOCIETIES

## UAV workflow for land tenure data acquisition

UT (ITC) – To design, test and validate UAV workflow

Synthesis on the current state of UAV regulations



Stöcker, C.; Bennett, R.;  
Nex, F.; Gerke, M.;  
Zevenbergen, J.: Review  
of the current state of UAV  
regulations. In: Remote  
Sensing. 2017, 9, 459;

ORGANISED BY



MAIN SUPPORTERS



PLATINUM SPONSORS





6-11 May 2018 ISTANBUL

EMBRACING OUR SMART WORLD WHERE THE CONTINENTS CONNECT:

ENHANCING THE GEOSPATIAL MATURITY OF SOCIETIES

## UAV workflow for land tenure data acquisition

- Selection of a suitable UAV
- Purchase, shipping and import UAVs
- Pilot training for 8 trainees (UT, HL, BDU, TUK, INES, ESRI)



- Fixed wing UAV, 60 min of endurance
- Payload:
  - Industrial grade RGB camera
  - IMU/GNSS Applanix APX-15

6-11 May 2018 ISTANBUL

EMBRACING OUR SMART WORLD WHERE THE CONTINENTS CONNECT:

ENHANCING THE GEOSPATIAL MATURITY OF SOCIETIES

## UAV workflow for land tenure data acquisition

- Selection of a suitable UAV, purchase, shipping and import UAVs
- Pilot training for 8 trainees (UT, HL, BDU, TUK, INES, ESRI)

Fixed wing UAV,

Payload:

- Industrial grade RGB camera
- IMU/GNSS Applanix APX-15



Reasons for selection:

- With a flight time of up to 90min the UAV can capture more than 1 km<sup>2</sup> during one flight with a GSD of less than 3cm.
- Allows for direct georeferencing (reducing the ground surveying work)

## UAV - data collection

- Test flights in Germany (testing different ground trothing strategies and processing scenarios)
- Successful flights in:
  - Rwanda (Charis UAS)- urban and peri urban area – Musanze)
  - Kenya (rural Maasai land and in peri-urban Kisumu)
  - Zanzibar (World Bank collaboration)





6-11 May 2018 ISTANBUL

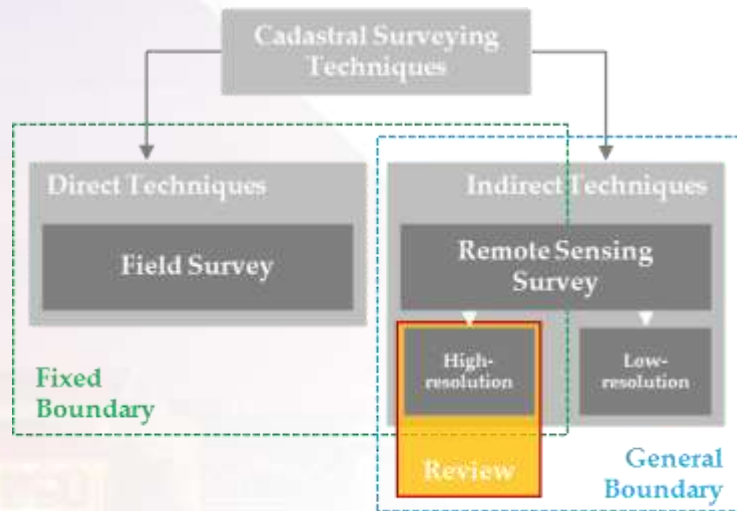
EMBRACING OUR SMART WORLD WHERE THE CONTINENTS CONNECT:

ENHANCING THE GEOSPATIAL MATURITY OF SOCIETIES

## Automate

UT (ITC) – To design a tool for automatic delineation of visible cadastral boundaries based on UAV images

Review background information



*remote sensing*

*Review*

### Review of Automatic Feature Extraction from High-Resolution Optical Sensor Data for UAV-Based Cadastral Mapping

Sophie Crommelinck \*, Rohan Bennett, Markus Gerke, Francesco Nex, Michael Ying Yang and George Vosselman

Faculty of Geo-Information Science and Earth Observation (ITC), University of Twente, Enschede 7500 AE, The Netherlands; r.m.bennett@utwente.nl (R.B.); m.gerke@utwente.nl (M.G.); f.nex@utwente.nl (F.N.); michael.yang@utwente.nl (M.Y.Y.); george.vosselman@utwente.nl (G.V.)

\* Correspondence: s.crommelinck@utwente.nl; Tel.: +31-53-489-5524

Academic Editors: Farid Melgani, Gonzalo Pajares Martinsanz, Richard Müller and Prasad S. Thenkabail  
Received: 30 June 2016; Accepted: 11 August 2016; Published: 22 August 2016

**Abstract:** Unmanned Aerial Vehicles (UAVs) have emerged as a rapid, low-cost and flexible acquisition system that appears feasible for application in cadastral mapping: high-resolution imagery, acquired using UAVs, enables a new approach for defining property boundaries. However, UAV-derived data are arguably not exploited to its full potential: based on UAV data, cadastral boundaries are visually detected and manually digitized. A workflow that automatically extracts

ORGANISED BY



MAIN SUPPORTERS



PLATINUM SPONSORS



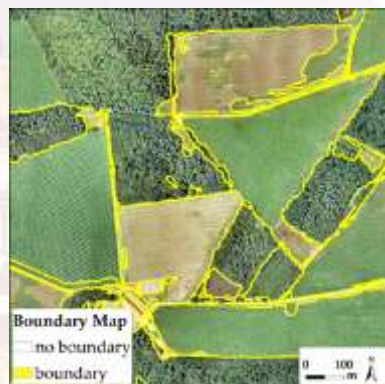
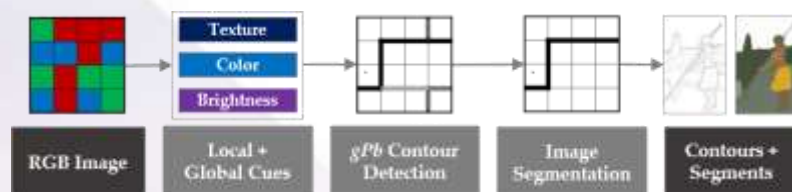
6-11 May 2018 ISTANBUL

EMBRACING OUR SMART WORLD WHERE THE CONTINENTS CONNECT:

ENHANCING THE GEOSPATIAL MATURITY OF SOCIETIES

## Automate

### Globalized Probability of Boundary (gPb) Contour Detection



remote sensing



Article

### Contour Detection for UAV-Based Cadastral Mapping

Sophie Crommelinck <sup>1,\*</sup>, Rohan Bennett <sup>1</sup>, Markus Gerke <sup>2</sup>, Michael Ying Yang <sup>1</sup> and George Vosselman <sup>1</sup>

<sup>1</sup> Faculty of Geo-Information Science and Earth Observation (ITC), University of Twente, NL-7500AE Enschede, The Netherlands; r.m.bennett@utwente.nl (R.B.); michael.yang@utwente.nl (M.Y.Y.); george.vosselman@utwente.nl (G.V.)

<sup>2</sup> Institute of Geodesy and Photogrammetry, Technical University of Brunswick, D-38106 Braunschweig, Germany; m.gerke@tu-bs.de

\* Correspondence: s.crommelinck@utwente.nl; Tel: +31-53-489-5524

Academic Editors: Farid Melgani, Francesco Nex, Richard Gloaguen and Prasad S. Thenkabail  
Received: 2 December 2016; Accepted: 15 February 2017; Published: 18 February 2017

**Abstract:** Unmanned aerial vehicles (UAVs) provide a flexible and low-cost solution for the acquisition of high-resolution data. The potential of high-resolution UAV imagery to create and update cadastral maps is being increasingly investigated. Existing procedures generally involve substantial fieldwork and many manual processes. Arguably, multiple parts of UAV-based cadastral

ORGANISED BY



MAIN SUPPORTERS



PLATINUM SPONSORS







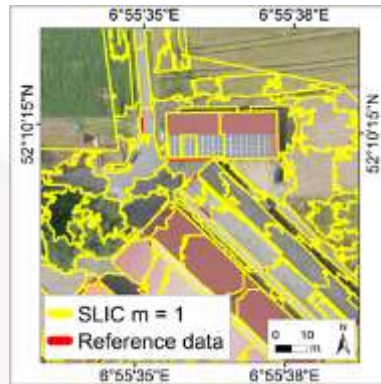
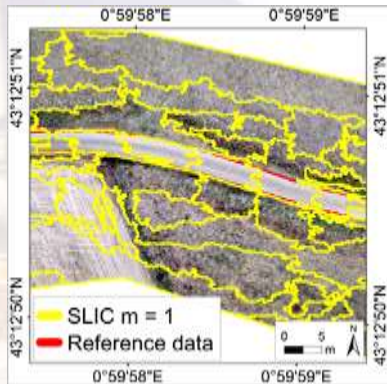
6-11 May 2018 ISTANBUL

EMBRACING OUR SMART WORLD WHERE THE CONTINENTS CONNECT:

ENHANCING THE GEOSPATIAL MATURITY OF SOCIETIES

## Automate

### Simple Linear Iterative Clustering (SLIC)



#### SLIC SUPERPIXELS FOR OBJECT DELINEATION FROM UAV DATA

S. Crommelinck <sup>1,\*</sup>, R. Bennett <sup>2</sup>, M. Gerke <sup>2</sup>, M. N. Koeva <sup>2</sup>, M. Y. Yang <sup>2</sup>, G. Vosselman <sup>2</sup>

<sup>1</sup> Faculty of Geo-Information Science and Earth Observation (ITC), University of Twente, NL-7500AE - (s.crommelinck, r.m.bennett, m.n.koeva, michael.yang, george.vosselman)@utwente.nl  
<sup>2</sup> Institute of Geodesy and Photogrammetry, Technical University of Braunschweig, D-38106 Braunschweig - m.gerke@tu-bs.de

Commission #, WG ##

**KEY WORDS:** UAV Photogrammetry, Image Segmentation, Object Detection, Contour Detection, Image Analysis, Land Administration, Cadastral Boundaries, Cadastral Mapping

#### ABSTRACT:

Unmanned aerial vehicles (UAV) are increasingly investigated with regard to their potential to create and update (cadastral) maps. UAVs provide a flexible and low-cost platform for high-resolution data, from which object outlines can be accurately delineated. This delineation could be automated with image analysis methods to improve existing mapping procedures that are cost, time and labor intensive and of little reproducibility. This study investigates a superpixel approach, namely simple linear iterative clustering (SLIC), which has, to the best of the authors' knowledge, never been applied to UAV data. The approach is investigated in terms of its applicability to high-resolution UAV orthomosaics and in terms of its ability to delineate object outlines of roads and roofs. Results show that the approach is applicable to UAV orthomosaics of 0.05 m GSD and extents of 100 million and 400 million pixels. Further, the approach delineates the objects with the high accuracy provided by the UAV orthomosaics at completeness rates of up to 64%. The

ORGANISED BY



MAIN SUPPORTERS



PLATINUM SPONSORS





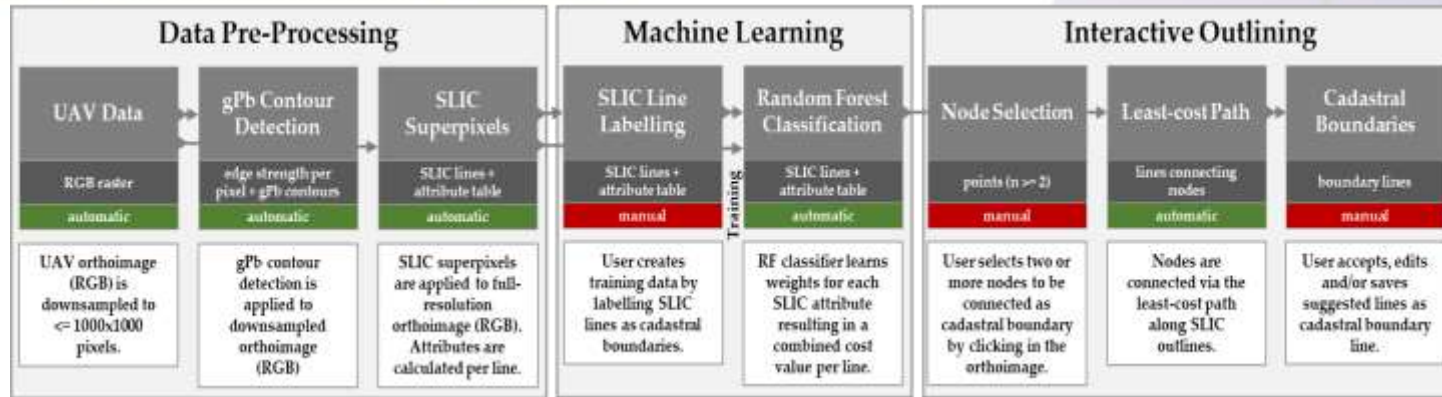
# Automate

Combination of:

- The two state-of-the-art computer vision methods: gPb and SLIC and
- Machine learning part (assigning costs to each outline according to local boundary knowledge)

Interactive user guided delineation (by calculating the least cost path by previously extracted lines)

Results: Compared to manual delineation, the number of clicks per 100m is reduced up to 86%





6-11 May 2018 ISTANBUL

EMBRACING OUR SMART WORLD WHERE THE CONTINENTS CONNECT:

ENHANCING THE GEOSPATIAL MATURITY OF SOCIETIES

## Tool integration

HL- To develop a technical platform for integrating the developed tools.

The implementation follows a toolbox approach – user can select the tools of his interest.

Following the idea for geocloud the tools will be encapsulated as services with an appropriate API.

ORGANISED BY



MAIN SUPPORTERS



PLATINUM SPONSORS





6-11 May 2018 ISTANBUL

EMBRACING OUR SMART WORLD WHERE THE CONTINENTS CONNECT:

ENHANCING THE GEOSPATIAL MATURITY OF SOCIETIES

## Govern and Grow and Capitalize

- To understand how these technologies can be adopted and sustained
- To develop a sustainable business model for commercialization of the integrated suite of land tenure recording tools within the end-user markets.

ORGANISED BY



MAIN SUPPORTERS



PLATINUM SPONSORS







6-11 May 2018 ISTANBUL

EMBRACING OUR SMART WORLD WHERE THE CONTINENTS CONNECT:

ENHANCING THE GEOSPATIAL MATURITY OF SOCIETIES

## Website – [www.its4land.com](http://www.its4land.com)

Home About News Events Output People Governance

### Kenyan Reconnaissance

5 days of learning and sharing

DETAILS FINDINGS

We're creating seven new tools to make land rights mapping faster, cheaper, easier, and more responsible

ORGANISED BY



MAIN SUPPORTERS



PLATINUM SPONSORS





# amsterdam

FIG WORKING WEEK 2020  
10 – 14 MAY

## Smart Surveyors for Land and Water Management



ORGANISED BY



MAIN SUPPORTERS



PLATINUM SPONSORS

