



XXVII FIG CONGRESS

11-15 SEPTEMBER 2022
Warsaw, Poland

Volunteering
for the future –
Geospatial excellence
for a better living

What the Future Holds for the Banca del Dato Immobiliare? – Insights and Reflections

Geom. Cromwell MANALOTO
Italy

ORGANISED BY



PLATINUM SPONSORS



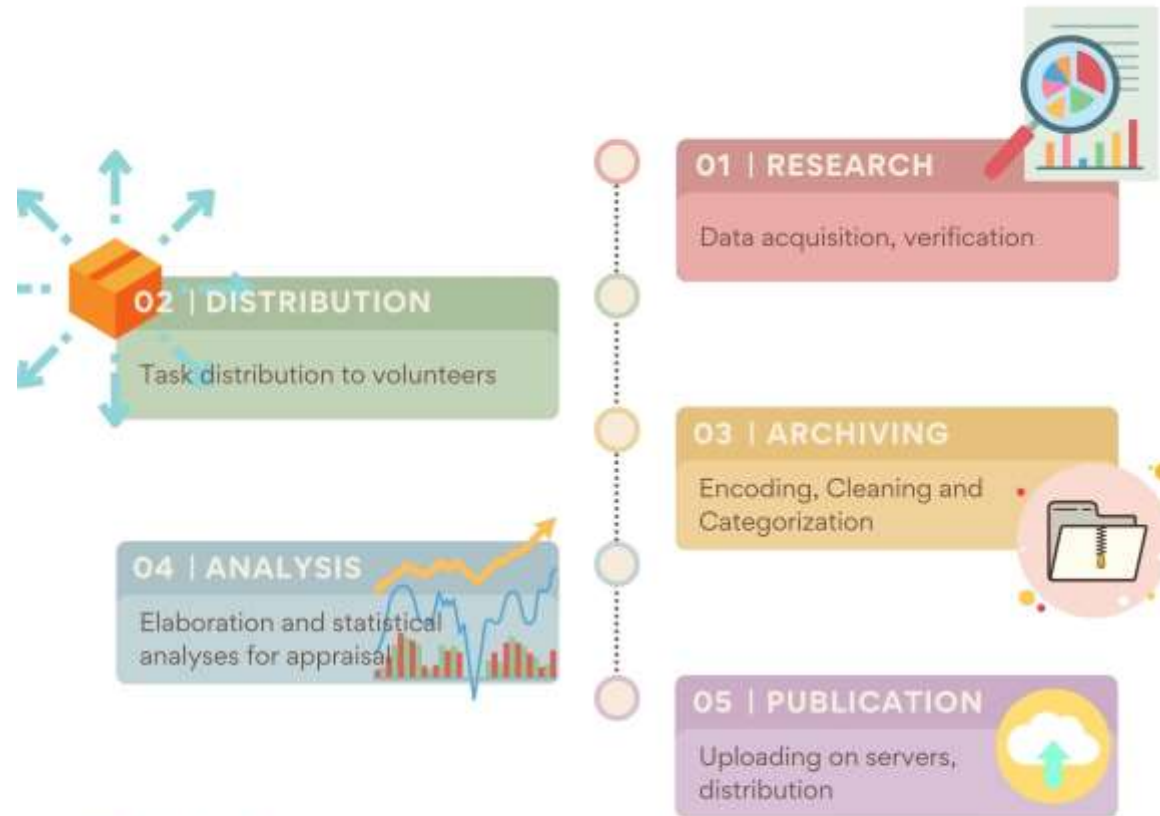
The Banca del Dato Immobiliare (BDI) is a database of potential real estate valuation comparables derived from previously contracted title transfers categorized by location (sectors), destination, and other usable parameters. The comparables were sourced out from the entire territory of Ascoli Piceno and other bordering municipalities. It was designed in response to provide valuations, appraisals and reports that are compliant to:

- International Valuation Standards
- Real Estate Valuation Code by Tecnoborsa,
- the ABI Guidelines
- UNI 11558/2014
- UNI 11612/2015

BANCA DEL DATO IMMOBILIARE

I GEOMETRI DI ASCOLI PICENO ANTICIPANO IL FUTURO

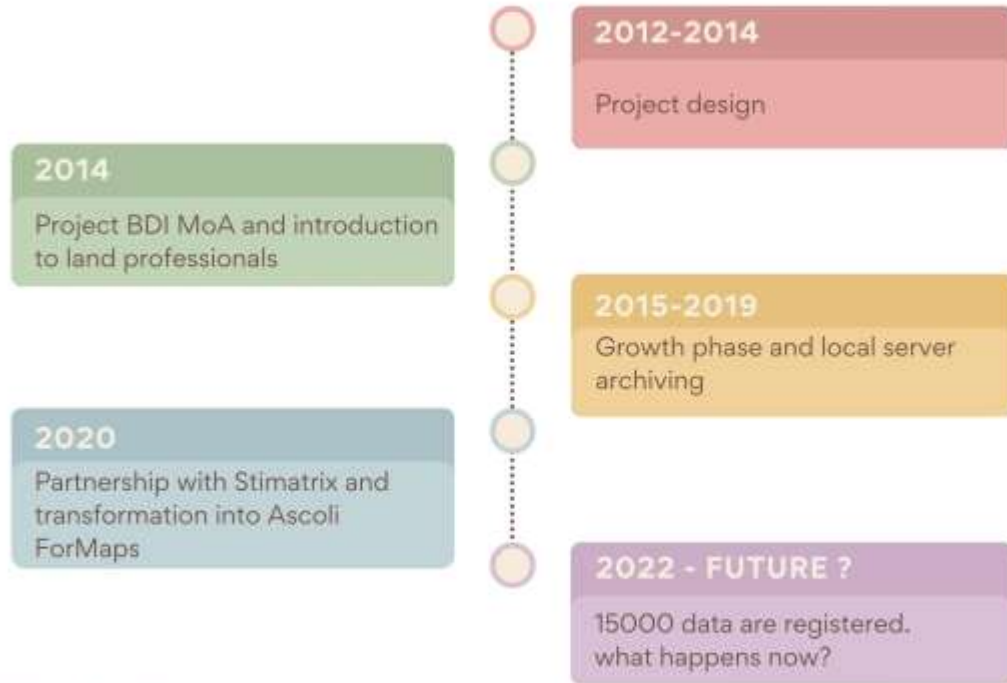




BDI | Process

The primary objectives of BDI are:

- to provide credit lending institutions greater transparency and reliability in valuation and appraisals;
- to create a strategic tool in support of real estate operators;
- Redefine how real estate valuation are carried out with use of the scientific method base on the requisites presented in IVS;



BDI | Timeline

Keypoints:

- a) Project BDI relies heavily on **volunteerism**.
- b) Trying to “gatekeep” the data proved to be counterproductive.
- c) Collected data grew from 36 in 2015 to 3468 in 2021.
- d) Integration with other open-source data shows more potential.
- e) *Sharing is caring.*

BANCA DEL DATO IMMOBILIARE
Collegio dei Geometri e G.L. di ASCOLI PICENO

bdi@geom.etrpiceni.it

Internet Maps

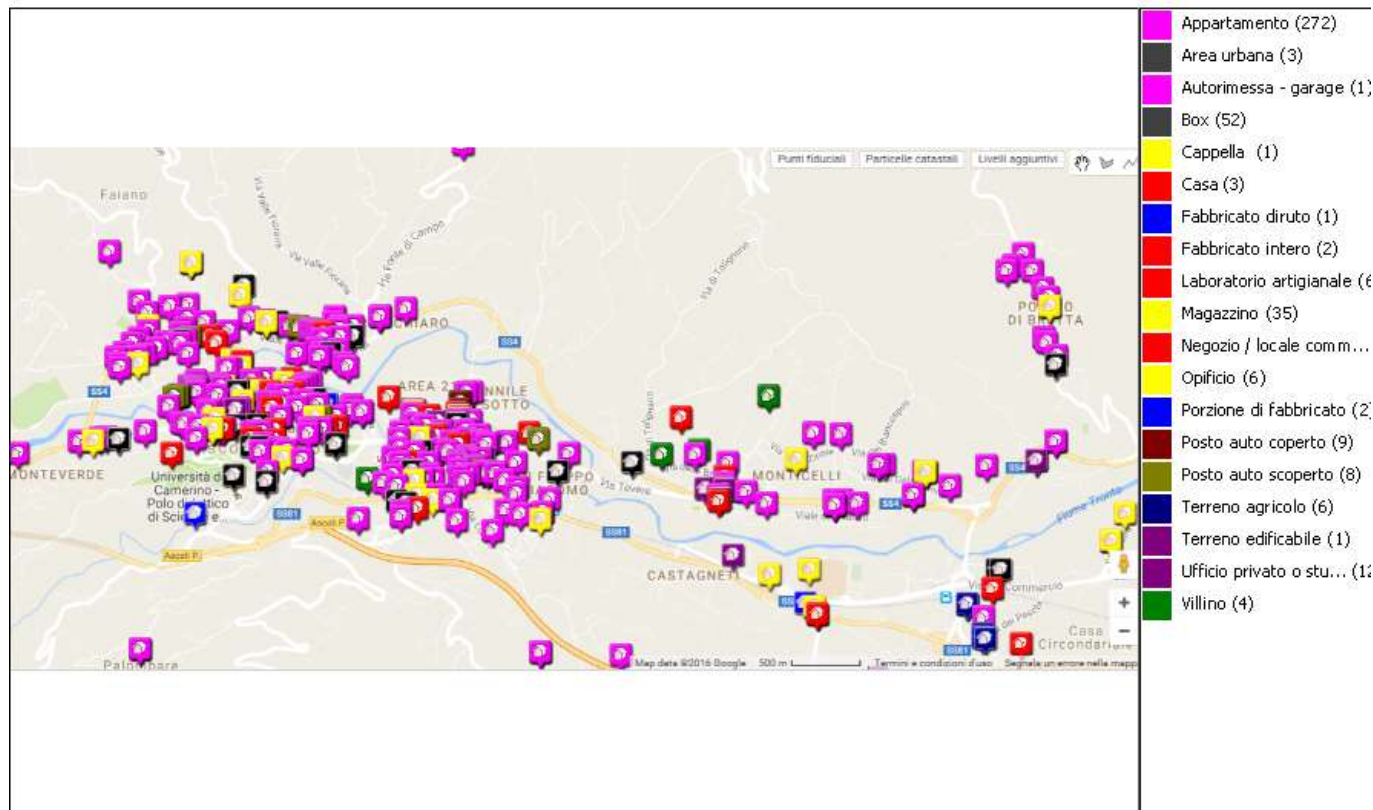


ASCOLI PICENO, 28/10/2016

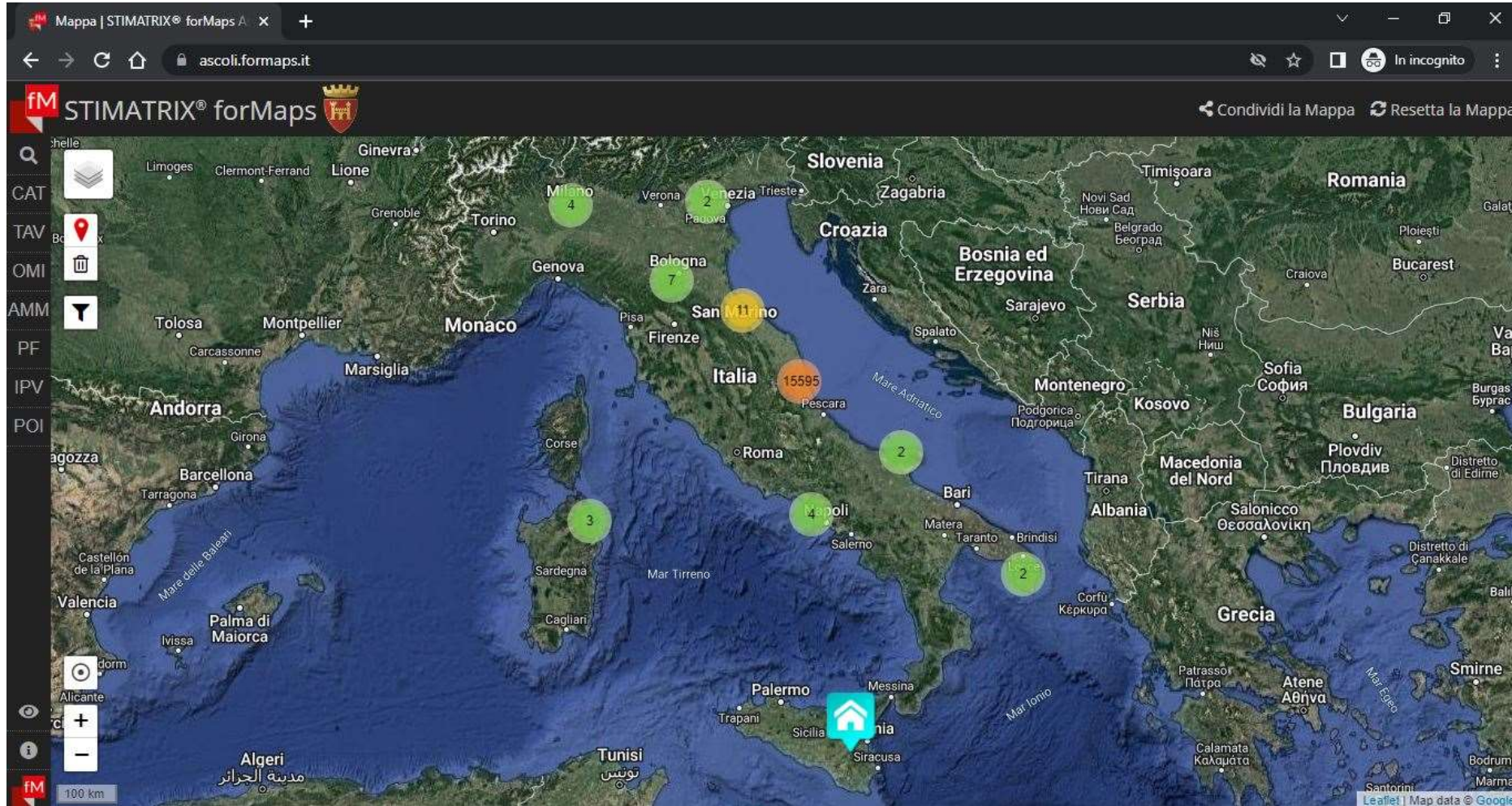
BANCA DEL DATO IMMOBILIARE
Collegio dei Geometri e G.L. di ASCOLI PICENO

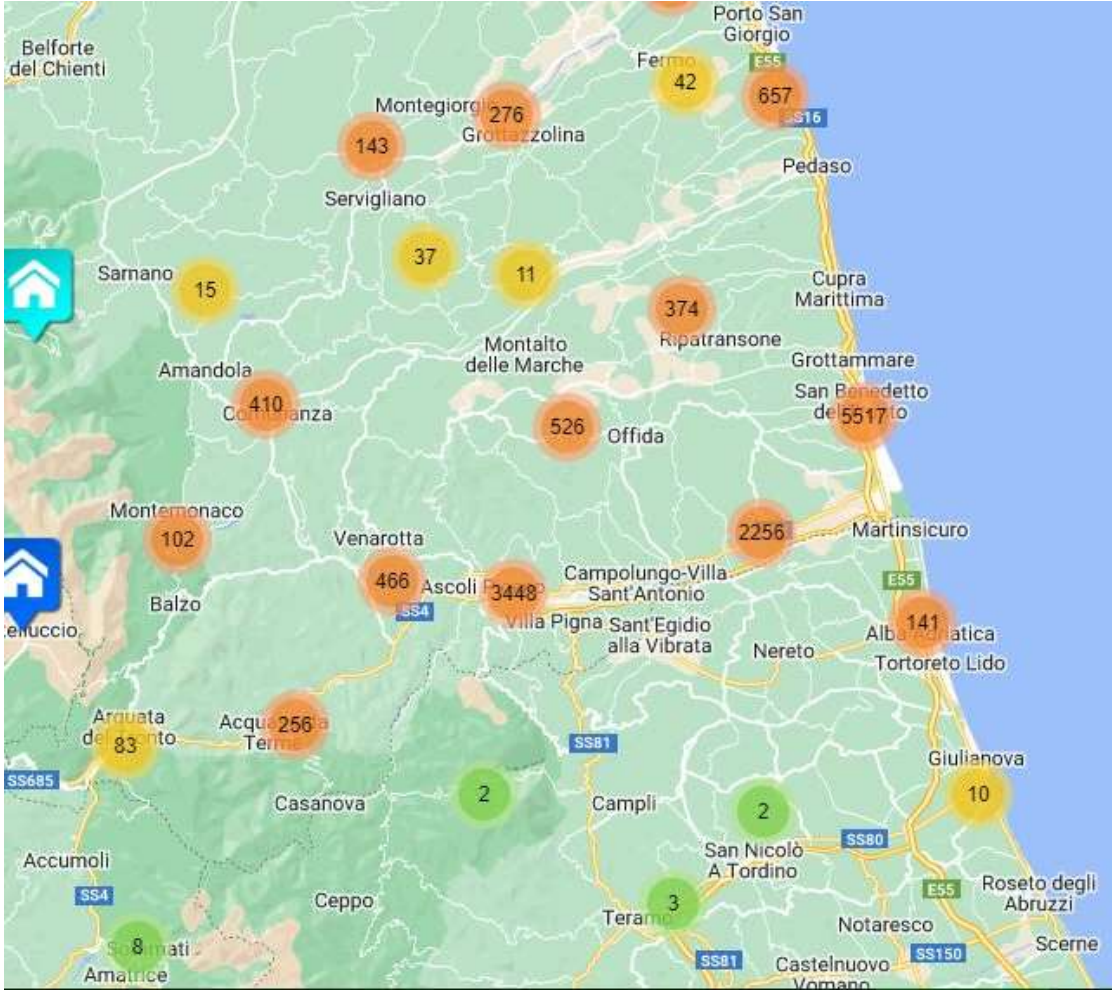
bdi@geom.etrpiceni.it

Internet Maps



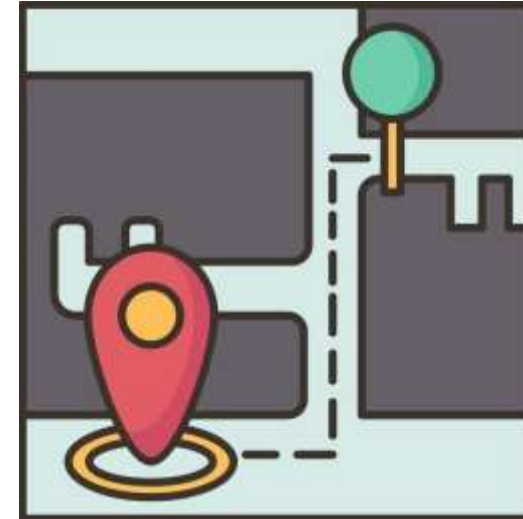
ASCOLI PICENO, 28/10/2016





Reflections:

- Improve the way data are collected -> Digitized.
- Provide volunteer trainings to lessen errors.
- Extend the definition of features that are being collected.
- Extend the use of BDI data to policy makers and public offices.
- *Bridge the Digital Gap, Identify Trends*



Thank you for your attention!

CROMWELL MANALOTO

Geometra | Surveyor

349/1610645 cromwell.manaloto@libero.it



Collegio Provinciale
Geometri e Geometri Laureati
di Ascoli Piceno